

# Prepared by The Players/L.A.

**HOW STRONG A GAME?**  
 U.S. Chess Fed. standards:  
 Master=2200+; expert=2000+;  
 'A'=1800+; 'B'=1600+; 'C'=1400+; 'D'=1200+; 'E'= under 1200

HAND-HELD MACHINES

JUNIOR MODELS

FEATURES		upgradable?	approx. cost	solves mate-in-x	sensor board	multi-move (2 players)	take-back feature	levels #	tournament level	analysis level	switches slides	battery
<b>Novag Micro III</b> An easy - to - operate, sophisticated machine with peg-bottom pieces and a high-tech look. Clear plastic cover, sensor board.	<i>World's smallest chess computer with sensor board. Plays against itself. Pieces stay on board even if it is turned upside down.</i>		under \$70	2	*	*		8	*	*	*	*
<b>SciSys TravelMate</b> Sharply-designed sensor-board, hinged-top, instructions printed in multiple languages on face of machine, gray and green coloration.	<i>Plays 100 hours on one set of batteries. Remembers position for up to 1 year when turned off.</i>		under \$45		*			4			*	*
<b>SciSys Explorer</b> Detachable cover, futuristic design, pegged pieces, with function switches clearly delineated to the right of the board.	<i>Saves position when turned off. Thinks on opponent's time.</i>		under \$80	4	*	*		9	*		*	*
<b>Fidelity Mini-Sensory Challenger</b> Sensor board, trough at front for holding pieces, audible tone signals moves. Removeable plastic cover.	<i>Position verification. Opt. plug-in modules for advanced chess, book openings, gomoku, etc.</i>		under \$50	2	*	*		4	*	*	*	*
<b>Tandy (Radio Shack)</b> Extra-small (similar to SciSys Travel-Mate). High-tech look, sensor-board with pegged pieces.	<i>See SciSys TravelMate.</i>		under \$50		*			4			*	*
<b>Prodigy (Applied Concepts)</b> Sharply designed dual-function board - both sensor and key-in feature for playing with separate board. Well-defined pieces.	<i>Includes built-in timer. Plays different tones to indicate mode functions. Offers handicaps to novice players.</i>	*	under \$165	7	*	*		9	*	*	*	*
<b>Novag Presto</b> Efficient design with full-feature sensor board. Particularly easy to operate. Metallic finish, wood highlights.	<i>Magnetic pieces. Changes level during game. Includes travel pouch for pieces. Thinks on opponent's time.</i>		under \$100	2	*	*	*	8	*	*	*	*
<b>SciSys MK10</b> Ultra-slim black-and-white board, high-tech design, nearly full-sized board, with a sensor surface and either battery or wall-socket operation.	<i>100 hours battery life; retains memory for 1 year.</i>		under \$80	3	*	*		8	*	*	*	*
<b>SciSys Companion II</b> Virtually identical program to the MK 10 (above), but with a larger case. Green and white, sharp design.	<i>Thinks on opponent's time; suggests moves; remembers positions for 1 year.</i>		under \$115	4	*	*	*	9	*	*	*	*
<b>SciSys Concord</b> Another ultra-thin board from SciSys, this one with cast metal pieces. Sensor board, full-function switches.	<i>Retains position in memory when turned off.</i>		under \$135	4	*	*	*	9	*	*	*	*
<b>Fidelity Challenger 7</b> Molded plastic case, LED display indicates moves to be made, black-and-white playing surface.	<i>Random computer responses; plays opening positions from chess books.</i>		under \$120 usually discounted	2				7		*	*	*

# The Great American CHESS COMPUTER

# Chart: What's Hot n' What's Not

Computers that have been discontinued by their manufacturers have not been included here, along with the Conquest, Hanmax and Mattel lines, and a number of older Fidelity and Applied Concepts machines. This list is subject to updates.

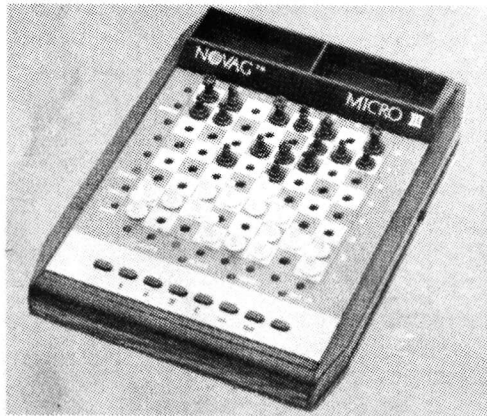
Model	Description	Level	Price	Response	Play	USCF	Other
Fidelity Challenger 8	Sensory version of Challenger '7'—with inset LED lights on every square. Either battery or plug-in operation.	'D' level	under \$165 usually discounted	2	★	★	8 ★ ★
Novag Dynamic "S"	Particularly elegant design, full-sized board, full sensory operation—and it accepts both a printer and a chess clock for high-level play.	'C' level	under \$185	4	★	★ ★	8 ★ ★ ★ ★
Novag Robot Adversary	A large, anodized aluminum board with a robot arm to move one or both sides. Many extra functions not available on other machines.	high 'C' level possibly low 'B'	under \$1700	7	★	★	10 ★ ★ ★
Milton Bradley	Magnetic operation under the board moves pieces automatically. Sharp, understated design; demo mode.	high 'C' level	under \$425	4	★	★	12 ★ ★
Novag Constellation 3.6	Full-sized molded plastic case, extra-strong program, one of the easiest chess computers to use. Green, white and brown with wood inlays.	'A' level No official USCF rating.	under \$275	12	★	★ ★	8 ★ ★ ★ ★
Novag Super Constellation	The strongest commercially available; same design as Constellation 3.6. Allows player to program in additional lines; detects & signals up to mate-in-4.	Low Expert level USCF rating: 2018	under \$675	12	★	★ ★	16 ★ ★ ★ ★
SciSys Superstar	Top of the SciSys line; finely-designed green and beige case; displays move under consideration; sensor board.	'B' level No official USCF rating.	under \$225	4	★	★ ★	24 ★ ★ ★ ★
Fidelity Challenger 9	Same as Challenger '8', but with substantially advanced program.	'B' level No official USCF rating.	under \$225	7	★	★ ★	9 ★ ★ ★ ★
Fidelity Elite A/S	A well-crafted wooden board with wooden pieces. Fine program allows transpositions, etc. Built-in voice repeats moves.	'A' level No official USCF rating.	under \$675	7	★	★ ★	15 ★ ★ ★ ★
Fidelity 12	Metallic-finish board in a wood frame. Fidelity's best program. Sensor operation.	'A' level No official USCF rating.	under \$280	7	★	★ ★	12 ★ ★ ★ ★
Mephisto	Small black-plastic box to enter moves in; responds with an LED display. Lrg wooden sensor board optional.	'B' level USCF rating: 1673	under \$375 + \$570 (board)	7	★	★	8 ★ ★ ★ ★

ADVANCED MODELS

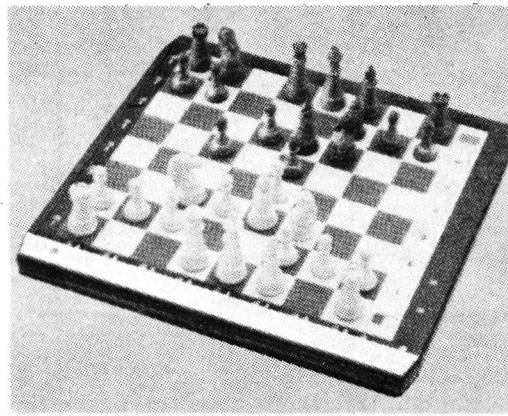
TOURNAMENT-STRENGTH

\* "Levels of play" is not a measurement of chess-playing strength. It only refers to how finely the manufacturer has divided up the response times. Generally speaking, the longer it takes for a computer to respond to a move, the deeper into the game it is looking. It is The Players' opinion that there is little advantage to more than 6 or 8 levels of play.

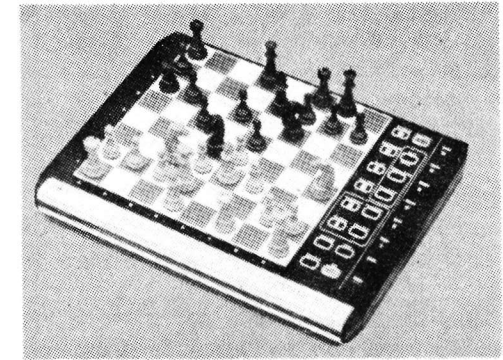
# NOVAG



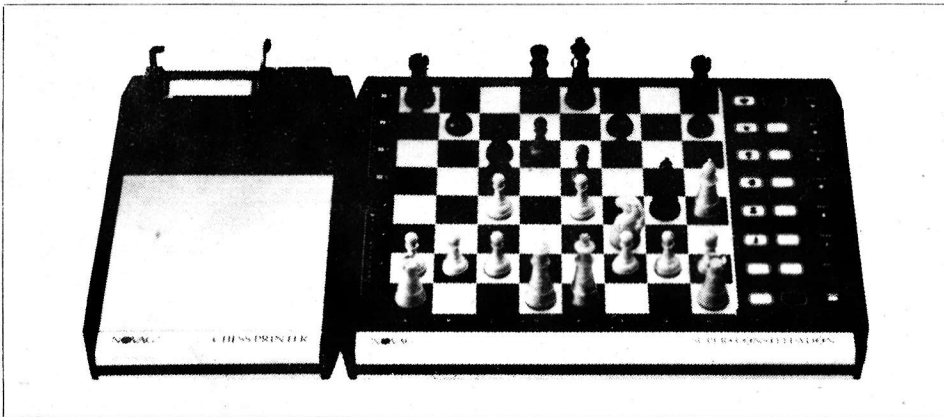
**MICRO III**  
 The world's smallest, full-fledged chess computer with a SENSOR BOARD. . . . . \$59.95  
 Member Price: \$45.00  
 Adaptor . . . . . \$11.95  
 Member Price: \$8.95  
 Travel Bag . . . . . \$9.95



**PRESTO**  
 Your reliable chess partner at home and while traveling. Complete with a large SENSOR CHESS BOARD and beautiful Staunton pieces in a travel pouch. . . . . \$89.95  
 Member Price: \$67.50  
 Adaptor . . . . . \$11.95  
 Member Price: \$8.95



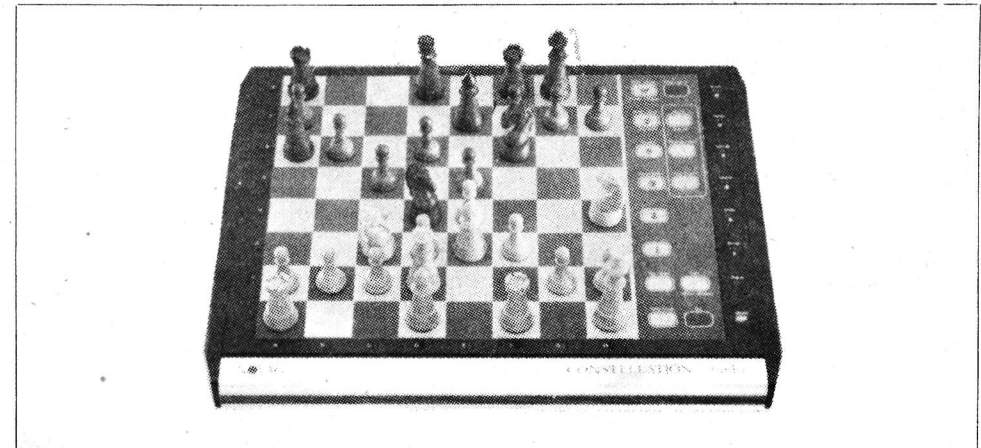
**NOVAG DYNAMIC "S"**  
 A dynamic chess computer. An excellent tutor for beginners and a strong chess partner for good players. . . . . \$159.95  
 Member Price: \$120.00  
 Adaptor (optional) . . . . . \$17.95  
 Member Price: \$13.50



## SUPER CONSTELLATION

The state - of - the - art micro chess computer from NOVAG, with world's first PROGRAMMABLE OPENING BOOK.

- number of moves or entire game.
- Computing time can be interrupted to demand computer's move immediately.
- Early checkmate announcement.
- Resigns automatically.
- Simple SET - UP of positions with full LEG -



## CONSTELLATION 3.6

A brilliant analyst for expert players...powerful opponent for club players...patient teacher of beginners. Strong, super-fast, and inexpensive.

match your skill and gradually move up as you improve.

- Level 1 = blitz: 60 moves/5 min.
- Level 2 = blitz: 40 moves/5 min.

- The 56K chess program offers superb play proven in international tournaments.
- OPENING BOOK contains over 20,000 half-moves.
- PROGRAMMABLE OPENING BOOK offers a new dimension in chess. Players can program their own opening book of 2,000 half-moves and replay those, fully or partially erase and reprogram other openings. A great feature for club and tournament play.
- OPENING MEMORY. Long term CMOS-type game memory. Contains all international chess rules. Does not accept illegal moves.
- Accepts and executes pawn promotions to Queen, Rook, Bishop, Knight.
- 16 skill levels including blitz, training, tournament, and analytic levels.
- Strong, versatile endgame capabilities. For the first time can force a mate with King, Bishop and Knight!
- Solves up to mate - in - 12 moves.
- Computer plays black or white; change of color is also possible during a game.
- Computes even on opponent's time for optimum analysis and best play.
- Super - fast play and human - like understanding of positions.
- Computing of moves can be watched.
- Shows DEPTH SEARCH in numbers of moves.
- Additional RANDOM SELECTOR can be switched on for greater variety of play.
- HINT mode suggests moves or indicates all legal moves in a situation.
- TAKE BACK allows take back of any

- ALITY CHECK.
- Board VERIFICATION.
  - MULTI - MOVE Mode allows to enter openings or part of a game without computer response. Also allows 2 players of play on the board with full legality check.
  - Comes with fully integrated SENSOR BOARD and fine Staunton pieces.
  - Low - Battery Indicator.

PORTABLE: Plays on six 1.5 volt C - type batteries or adaptor (both not included).

Reg. . . . . \$600.00  
 SPECIAL OFFER: Super w/ Adaptor included:  
 . . . . . \$399.95  
 Member Price: \$299.95  
 Complete set with Clock & Printer: . . \$600.00  
 Member Price: \$450.00

**SPECIAL PACKAGE**

Super Constellation and Elite A/S 4.0 (with both adaptors, both printers, Novag Quartz Chess Clock, full set of ECO cartridges), for the player who deserves both systems. Keep the Elite at home as a beautiful living room showpiece and play a game at your leisure. Travel with the Super or use it at home for an entirely refreshing, different style of play.  
 Total List Prices: . . . . . \$2,225.00  
 SALE: \$1,895.00  
 Member Price: \$1,421.25

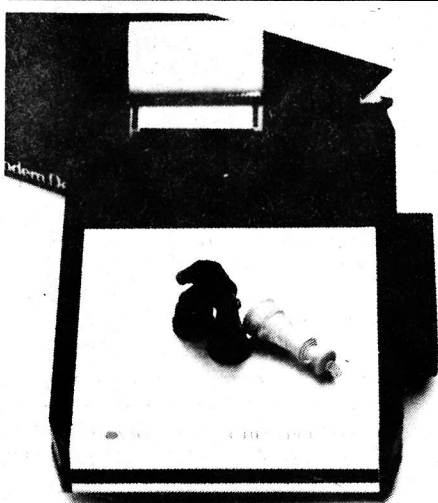
**NOVAG CHESS PRINTER**

The most advanced and most dependable computer printer for chess ever developed.

- Prints on heat sensitive paper so image is always crisp and readable - no ribbon to wear out.
- Prints in full algebraic - figurine algebraic.
- Prints large, easy-to-read diagrams at any point during a game - repeatedly if you like.
- Will print out tournament games between you and an opponent played on the Dynamic "S" computer board.

Can be used with the Dynamic "S", the Robot Adversary, and the Super Constellation.

Novag Chess Printer. . . . . \$150.00  
 Member Price: \$112.50



**PROGRAM FEATURES**

- Knows all international chess rules and announces draw, stalemate, check and mate.
- Accepts and executes pawn promotions to a Queen, Rook, Bishop or Knight.
- Extensive opening book with more than 3000 half-moves.
- NEW: the OPENING MEMORY allows you to continue an opening even if you make a move that is not contained in that opening.
- Can search up to 24 half - moves ahead.
- Solves up to mate - in - 12 moves.
- Super fast play and human - like understanding of positions.
- Computing of moves can be watched.
- Additional random selector can be switched on for greater variety of play.
- Choose between 8 levels of difficulty to

Level 6 = tournament: 40 moves/90 min.  
 Level 7 = tournament: 40 moves/2 hours.  
 Level 8 = analytic level

**TECHNICAL DATA:**

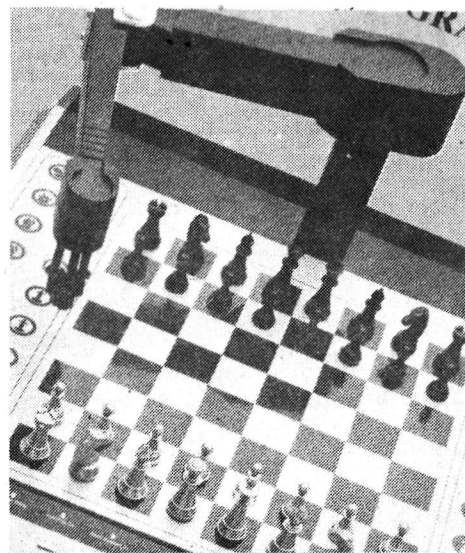
- . . . Energy saving CMOS technology.
  - . . . Integrated SENSOR BOARD and fine Staunton pieces.
  - . . . PORTABLE - plays with batteries or adaptor (both separate).
  - . . . Low-Battery indicator.
- CONSTELLATION 3.6 . . . . . \$249.95  
 Member Price: \$187.50  
 Adaptor . . . . . \$17.95  
 Member Price: \$13.50

**NOVAG DIGITAL CHESS CLOCK**

New in the American market; one of the easiest of all clocks to use, and one of the most sharply designed. Small removeable pads sit beside each

player to tap on, so that the actual clock is never touched during play.

Reg.: . . . . . \$89.95  
 Member Price: \$67.50



**NOVAG ROBOT ADVERSARY**

Featuring the super - strong 32K program. Particularly recommended as a stunning display item for retail stores that sell Novag computers, the ROBOT ADVERSARY is now available for

sale to the public - a not - to - be - missed conversation piece and a surprisingly strong opponent!

- The computer either can play both sides of a chess game by itself or it will play only one, moving its side with its robot arm, while you play the other side.
- Opening book contains 5,500 moves. Further book openings can be entered in MULTI-MOVE mode.
- Can compute up to mate - in - 14 moves.
- Solves problems up to mate - in - 7 moves.
- 9 skill levels and 2 analytical levels offer a wide choice of playing strength. 2 tournament levels.

The NOVAG CHESS PRINTER and the NOVAG QUARTZ CHESS CLOCK can be connected to the ROBOT as accessories.

ROBOT ADVERSARY . . . . . \$1599.00  
 Member Price: \$1199.00

**CALL IN YOUR ORDER TOLL-FREE: 1 - 800 - THE - PLAY (IN CALIFORNIA, 213/665 - 5728)**

# FIDELITY



## ELITE A/S CHALLENGER

The Elite A/S Challenger™ combines the elegance of high-quality craftsmanship with the foremost chess programming the world has come to expect from Fidelity Electronics. A masterful blending of European art and American technology has created Fidelity's most remarkable chess playing opponent.

### SOFTWARE FEATURES: (See Prestige Challenger™) PLUS:

- Take-back features allows you to take back all moves of a typical game.
- Capable of performing various book transpositions from its library.

### HARDWARE FEATURES:

- Full size chess board has an automatic response playing surface, consisting of switches actuated by magnets in the bases of full size chess pieces.
  - Plug-in modular capability.
  - Built-in rechargeable battery saves memory of game.
  - 224K bits of ROM, 32K bits of RAM.
  - Built-in Chess Clock.
  - Tone and/or voice capability in either English, German, French, or Spanish.
  - Uses the 3 megahertz (MHz) 6502B processor.
- Hand-crafted nutwood housing with inlaid top. 100% solid-state. AC adaptor. Solid wood pieces (King almost 4" high). Brightly lit 1/2" LED display. Optional Printer. Size: 19 x 18 x 1 1/2 inches.

ELITE A/S CHALLENGER . . . . . \$650.00  
Member Price: \$487.50

Optional opening cartridges for Elite and Prestige owners.

ECO Volume A . . . . . \$120.00  
ECO Volume B . . . . . \$120.00  
ECO Volume C . . . . . \$120.00  
ECO Volume D . . . . . \$120.00  
ECO Volume E . . . . . \$120.00

Queen's Gambit Tarrasch Def. . . \$120.00  
Book Openings Number 1\* . . . \$ 78.00  
Book Openings Number 2\* . . . \$120.00  
\*Also works with Challenger 9.  
Member Price: \$90.00  
(Book Openings No. 1: \$58.50)

## SPECIAL PACKAGE

Super Constellation and Elite A/S 4.0 (with both adaptors, both printers, Novag Quartz Clock, full set of ECO cartridges) for the player who deserves both systems. Keep the Elite at home as a beautiful living room show-piece and play a game at your leisure. Travel with the Super or use it at home for an entirely refreshing, different style of play.

Total List Prices: . . . . . \$2,225

SALE: \$1,895

Member Price: \$1421.25



## CHALLENGER™ PRINTER

### COMPUTER PRINTOUT

The Fidelity Challenger™ Printer is the ideal companion to Fidelity's Prestige, Elite A/S, Champion, and Super "9" Challenger™ series.

Now you can have a continuous printed record of every move in large, easy-to-read type. You can visually analyze moves, detect strategies, graphically record piece positions on the entire board and maintain a permanent record of each game.

- Records and numbers each move, with white's move and black's move on one single line.
- Displays current piece positions on entire board by printing a graphic display of white and black pieces in their actual locations.

Printer operation is entirely automatic, plugs into back of game, and is completely controlled by the Challenger™ series models mentioned above. Size: 9 1/4 x 6 1/4 x 3 1/4 inches.

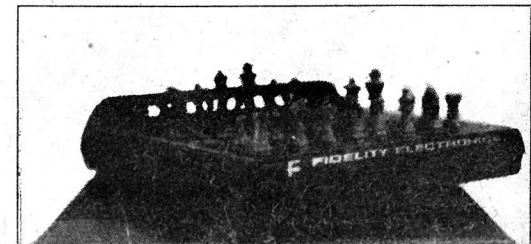
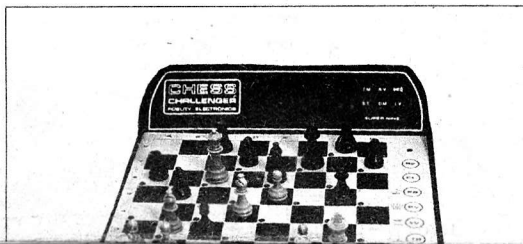
### CHALLENGER PRINTER

Thermal . . . . . \$195.00

Member Price: \$146.25

Impact . . . . . \$135.00

Member Price: \$101.25





## SUPER "9" CHALLENGER

The SUPER "9" has an advanced chess playing program and a faster processor, 2MHz clockspeed. PLUS:

- Voice feature repeats all of your moves, repeats all of its moves, and is available in English, French, German, or Spanish.
- Fidelity's popular CB9 Book Opening Program is built in.
- Fifteen selectable levels of play: Eight preset time controls and seven additional levels.
- While thinking, it can display the move it is considering making, its current depth of search, and the score of the position.
- 240K bits of ROM, 24K bits of RAM.
- Can suggest a move for you to make and show what it thinks will be the continuing line of play.
- Selectable Book Openings and Book Practice Mode.
- Take-back feature allows you to take back more than 35 half-moves.
- Solves Mate-in-Seven and announces stalemate, draw by the 50-move rule, and draw by three-fold repetition.
- Promotes Pawns to all legal pieces.
- Monitor Mode lets Challenger referee a game between two human players by checking for illegal moves.
- Chess Clock tells time remaining for each player, or tells elapsed time of game.
- If allowed, it will resign in hopeless positions.

Features include impact resistant housing, Sensory playing surface, large 1/2-inch LED Display, 100% solid-state. AC adaptor included. Size: 10 1/4 x 11 1/2 x 3 3/8 inches.

SUPER "9" CHALLENGER . . . . . (Call for Price)



## PROGRAM CARTRIDGES

Cartridges are now available that greatly expand the capabilities of the Mini Sensory Chess Challenger, the Sensory Chess Challenger "9," the Sensory Challenger "6," the Prestige Challenger and the Elite A/S Challenger:

**MINI SENSORY CHESS CHALLENGER**

- ADVANCED CHESS PROGRAM (Model CAC)
- GREATEST GAMES I (Model CGG)
- BOOK OPENINGS I (Model CBO)

**SENSORY CHESS CHALLENGER "6"**

- GREATEST GAMES I (Model GG6)
- BOOK OPENINGS I (Model B06)

**SENSORY CHESS CHALLENGER "9"**

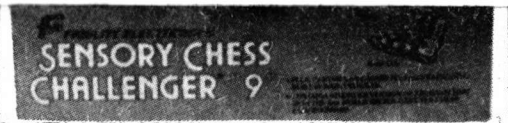
- BOOK OPENINGS I (Model CB9)
- BOOK OPENINGS II (Model CB16)

**PRESTIGE CHALLENGER, ELITE A/S, SENSORY CHESS CHALLENGER "9"**

- BLITZ CHESS (Model BLZ)
- THEORETICAL CHESS ENDINGS (Model TCE)
- ROOK AND PAWN ENDINGS (Model RPE)
- TARRASCH DEFENSE TO THE QUEEN'S GAMBIT (Model TDF)
- SICILIAN, VARIATION (1. e4; 2. Nf3 Nc6; 3. d4 cd4; 4. Nd4 Nf6; 5. Nc3 e5 (Model SVT).

Cartridges are constructed of impact resistant plastic, 100% solid-state for long life. Size: 2 3/4 x 2 1/4 x 3/4 inches.

(Call for Availability)



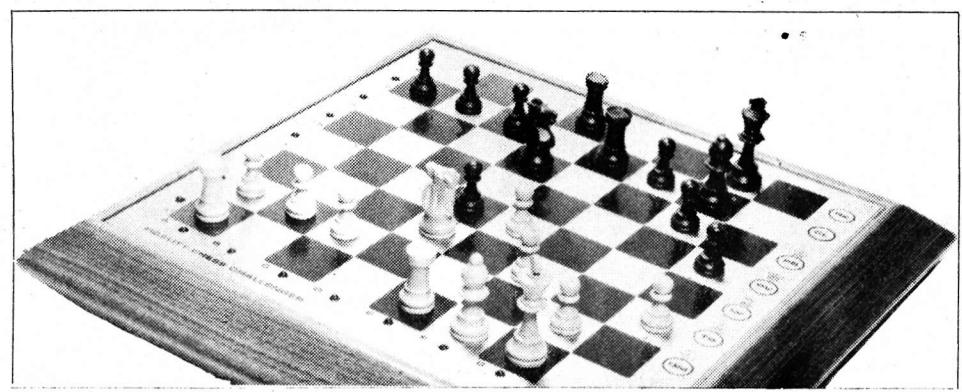
## SENSORY CHESS CHALLENGER "9"

**CHAMPIONSHIP PLAY FOR THE BEGINNER OR EXPERT WITH FIDELITY'S REMARKABLE SENSORY PLAYING SURFACE!**

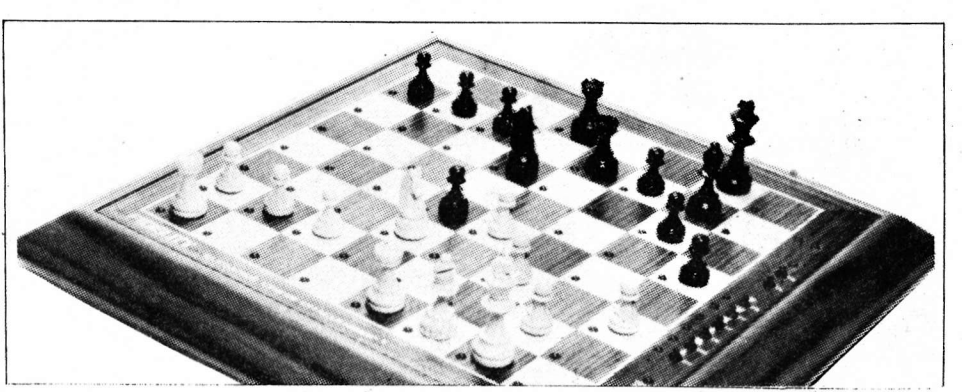
- Nine different levels of playing difficulty can be selected to match the skills of any player, novice or advanced.
- When asked, will suggest a move for the opponent and during the thinking process, will show move it is considering.
- Position Verification by Computer memory recall.
- Selectable Book Openings — Opening book of nearly 3,000 positions.
- Book Practice Mode — Provides drill on opening lines.
- Take-back feature allows take back of up to 15 half-moves.
- Expanded Mate and Draw announcement: Announces up to Mate-in-Seven; Announces draws in four separate categories and signals which type applies: Stalemate, 50-move Rule, Opponent's move repeated three times, Challenger "s" move will repeat three times.
- Thinks on the opponent's time for faster response and stronger play.
- Promotes Pawns to all legal pieces.
- Considers all legal Pawn promotions.
- 128K bits of ROM, 16K bits of RAM.

Durable molded housing, magnetic chess pieces (King 2 inches tall), uses four "C" size batteries (not included) or plug-in transformer. Internal clock keeps track of time control (Hardware accurate to 5%), 100% solid-state. Size: 11 1/4 x 10 5/8 x 2 1/2 inches.

SENSORY CHESS CHALLENGER "9" (Call for Price)



**FIDELITY CHESS CHALLENGER 12**  
 The latest in Fidelity's distinguished line of chess computers. "Push"-sensory board. Very nearly as strong and well featured as the Elite A/S Budapest for less than half the price. Twelve levels of play, including problem solving modes. The imitation metallic board is framed in walnut for a fine-furniture appearance. . . . . \$250.00  
 Member Price: \$187.50

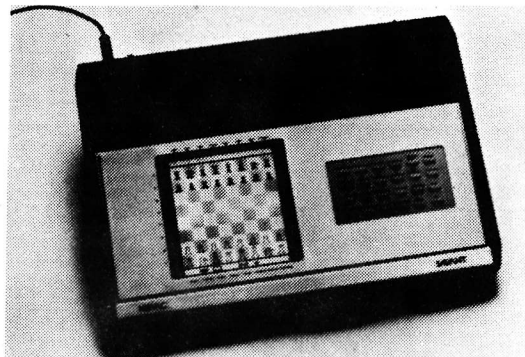


**FIDELITY "ELEGANCE"**  
 Released last year, the "Elegance" is an auto-sensory version of the Challenger 12 with a wooden playing surface, lights on each square (rather than on the coordinates). The program is an update of the Challenger 12. Please call The Players computer department (1-800-THE-PLAY; 213/665-5728 in California) for more detailed information. . . . . \$400.00  
 Member Price: \$300.00

**TWO WAYS TO SAVE: JOIN THE PLAYERS DISCOUNT CLUB FOR SAVINGS OF 25% OFF ALL ITEMS — EVEN SALE ITEMS! OR TAKE ADVANTAGE OF OUR LOWEST PRICE GUARANTEE:**

**IF YOU CAN FIND A LOWER ADVERTISED PRICE, TAKE 5% OFF AND SEND IT TO US — THAT IS THE TOTAL PRICE YOU PAY! EITHER WAY, YOU CAN'T LOSE WITH THE PLAYERS!**

# BARGAIN CLASSICS

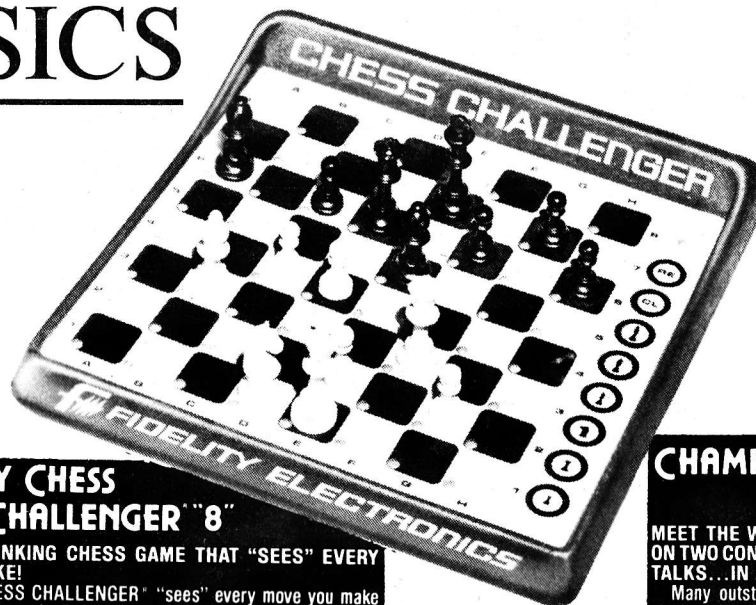
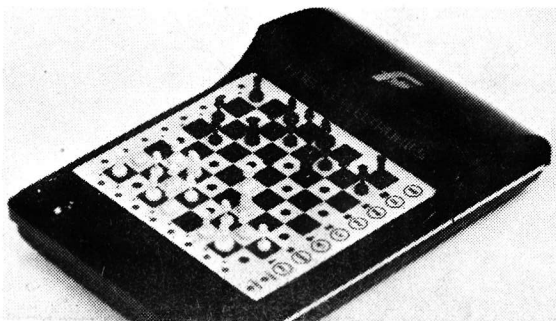


## NOVAG SAVANT II

The sleek new touch-sensitive computer with the famous "Mychess" program, up-graded!

The elegant, streamlined chess computer incorporates a large "LCD" chess board and SENSOR-TOUCH TECHNIQUE specially designed in the United States. And its strength easily equals the "Morphy". In fact, at the world computer chess championship in Lentz, Austria, the SAVANT came in First among microcomputers competing. You make your move by gently pressing the unique, illuminated symbol of the chess pieces from square to square. No more setting up chess pieces and entering coordinates! This new technique makes it simpler for you to play against the computer and finally enables you to concentrate fully on your game.

NOVAG SAVANT II . . . . . Reg.: \$625.00  
 SALE: \$499.00  
 Member Price: \$375.00



## SENSORY CHESS CHALLENGER "8"

THE FIRST THINKING CHESS GAME THAT "SEES" EVERY MOVE YOU MAKE!

SENSORY CHESS CHALLENGER "sees" every move you make and records it automatically. Play at any one of eight levels of difficulty. Works on batteries or plugs into any home wall outlet. New sensory playing surface automatically tells the Computer your every move — from and to — and which piece was moved. The squares light up to graphically show you the Computer's next move.

- "Mate-in-Two" and "Chess by Mail."
  - Levels changeable during game.
  - Random Computer responses vary every game.
  - Selection of offense or defense play.
  - Plays opening defenses from chess books, i.e. Sicilian, French, Ruy Lopez, Queen's Gambit Declined.
  - Uses 32K bits of ROM, 256 bits of RAM.
  - Add or subtract pieces during game.
  - Plays against YOU; plays against ITSELF; changes sides in MID-GAME.
- Durable molded housing, uses four "C" size batteries (batteries not included) or plug-in transformer, 100% solid-state.  
 Size: 11 1/4 x 10 5/8 x 2 1/2 inches.

SENSORY CHESS CHALLENGER "8"  
 Reg.: . . . . . \$155.00  
 SALE: \$89.95  
 Member Price: \$67.50

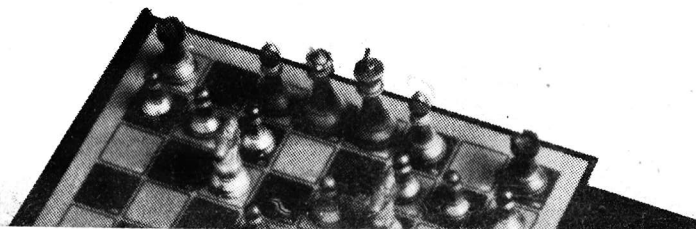
## CHAMPION SENSORY CHESS CHALLENGER

MEET THE WORLD CHAMPION! THE UNDISPUTED WINNER ON TWO CONTINENTS. IT THINKS, "SEES" EVERY MOVE, AND TALKS... IN ANY ONE OF FOUR DIFFERENT LANGUAGES.

Many outstanding features, include Fidelity's advanced sensory playing surface, 64 book opening variations, 64 Greatest Chess Master Games, full 50-word voice vocabulary.

- Infinite levels of play.
  - Thinks on its opponent's time for faster response.
  - Take-back feature reverses up to 15 moves or 30 half-moves.
  - Chess clock tells time remaining for each player, or tells elapsed time of game.
  - Chess clock count down mode allows separate game times to be set for the human and the Computer.
  - Special mate mode solves mating problems with amazing speed.
  - Play Mode allows two humans to play chess on its sensory playing surface. The Computer monitors plays, announcing the moves, rejecting illegal moves.
  - 256K bits of ROM, 24K bits of RAM.
- Walnut housing, hand carved, magnetized chess pieces, 100% solid-state. Size: 13 x 11 1/2 x 3 1/2 inches.

CHAMPION SENSORY CHESS CHALLENGER  
 Reg.: . . . . . \$375.00  
 SALE: \$195.00  
 Member Price: \$146.95



**MINI SENSORY CHESS CHALLENGER**

A small, portable, computerized chess opponent that is always ready to play whenever you are. Battery operated, it's ideal for use while travelling or relaxing while away from home. It's small size makes it easy to carry.

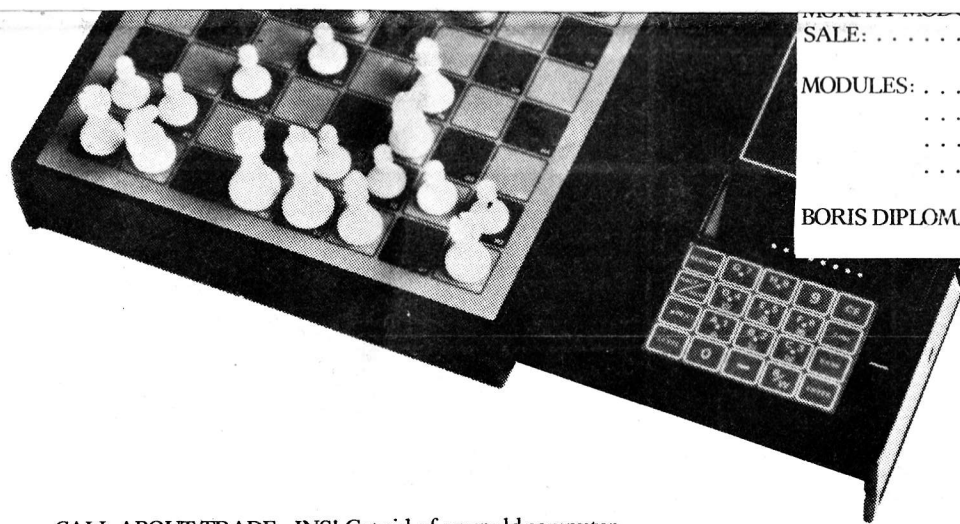
MINI SENSORY CHESS CHALLENGER . . . Reg.: \$60.00  
 SALE: \$39.95  
 Member Price: \$29.95

**VOICE SENSORY CHESS CHALLENGER**

Reg.: . . . . . \$360.00  
 SALE: \$175.00  
 Member Price: \$131.75

MEPHISTO CABINET (No Brain) . . . . . Reg.: \$550.00  
 SALE: \$350.00  
 Member Price: \$262.50

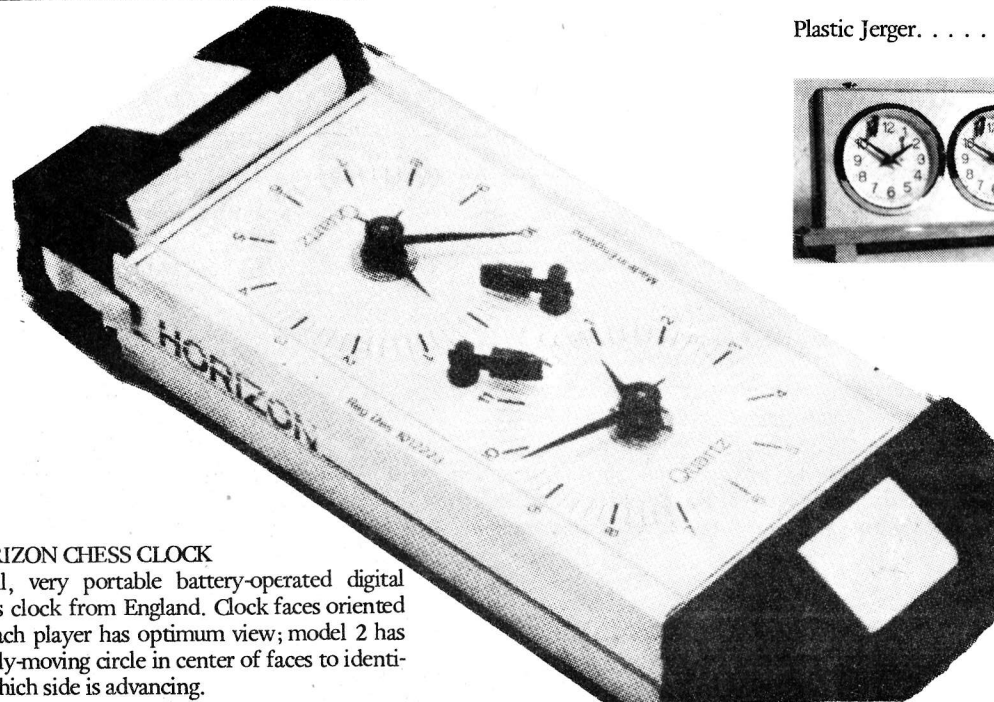
REBUILT CONSTELLATIONS! . . . . . \$175.00  
 Member Price: \$131.75



SALE: . . . . . \$99.95  
 Member Price: \$74.95  
 MODULES: . . . . . Morphy  
 . . . . . Gruenfeld  
 . . . . . Capablanca  
 . . . . . Steinitz  
 (Call for Prices.)  
 BORIS DIPLOMAT. . . . . \$49.95  
 Member Price: \$37.50

CALL ABOUT TRADE - INS! Get rid of your old computer and SAVE!

# CLOCKS



**HORIZON CHESS CLOCK**

Small, very portable battery-operated digital chess clock from England. Clock faces oriented so each player has optimum view; model 2 has slowly-moving circle in center of faces to identify which side is advancing.

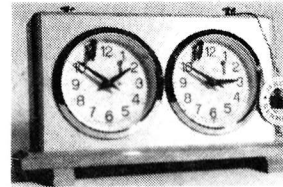
Reg.: . . . . . \$49.95  
 Member Price: \$37.50

NEW! MODEL 2

**JERGER CHESS CLOCK**

Beautiful wood construction. Imported from Europe. Made to last for years.

JE1 . . . . . Reg.: \$55.00  
 Member Price: \$41.25  
 Plastic Jerger. . . . . \$49.95  
 Member Price: \$37.50



**NOVAG DIGITAL CHESS CLOCK**

New in the American market; one of the easiest of all clocks to use, and one of the most sharply designed. Small removeable pads sit beside each player to tap on, so that the actual clock is never touched during play.

Reg.: . . . . . \$89.95  
 Member Price: \$67.50

**TWO WAYS TO SAVE: JOIN THE PLAYERS DISCOUNT CLUB FOR SAVINGS OF 25% OFF ALL ITEMS - EVEN SALE ITEMS! OR TAKE ADVANTAGE OF OUR LOWEST PRICE GUARANTEE: IF YOU FIND A LOWER ADVERTISED PRICE, TAKE 5% OFF AND PAY THE REMAINDER AS YOUR TOTAL PRICE! YOU CAN'T LOOSE WITH THE PLAYERS!**