
Eric Hallsworth
12 Turnpike Close
Peacehaven
East Sussex BN9 8BU

COMPUTER CHESS - NEWS SHEET 13. Spring 1987.

Dear Friends,

Well, here we are again! ("at last" did I hear some of you say?). I am sorry for the delay in getting this Issue to you which I had really intended should have been in your hands well before the end of March.

However, as those of you who have phoned me to ~~remind~~ remind me about it will know, work at Eureka is hectic to say the least. In one way, of course, that is good... but not for NEWS SHEET publication!

NEWS SHEET 13 - CONTENTS

- * The Future of the NEWS SHEET #3.
- * NEWS (not much in).
- * Effects of SPEED INCREASES #3.
- * Latest RESULTS from Sweden (a bumper dose with many for the new MEPHISTO DALLAS).
- * GAMES Section, including some from the 1986 World Micro Champs.
- * RATING LIST.

The FUTURE of the NEWS SHEET

First... don't PANIC; I do intend to keep it going if at all possible.

However it is fairly obvious that time isn't going to allow for either a Monthly or even bi-Monthly Issue as a general rule.

Each Publication depends on a variety of things (being available:- some GAMES (which are usually from my own Tests... for which I need TIME...) but Readers's Games are also welcome, especially if they have some brief notes drawing attention to critical moments; RESULTS which depends very

much on information from SWEDEN which I get Quarterly (though Goran Grotting is extremely helpful and will send mid-Issue PLY up-dates if I need them), and USA sent by Larry Kaufman. Most NEWS SHEET Readers appear to own just one Machine each as only 3 ever send me any scores at all; and Manufacturer's NEWS, i.e. forthcoming Machines, Speed increases, Tournament Games where Computers have played etc.

This Issue has thus been particularly hard to put together for not only have I been without spare time myself for doing Testing as well as Typing, but there was little news coming in and few Results until Goran's reached me last week to give me something to 'type up'. I am not complaining (not much, anyway!) but I hope Readers appreciate that there is more to producing a Chess Computer NEWS SHEET than just typing up any old rubbish... any hope of quality depends on useful input.

So, what of the future? The answer is basically that it will depend on the time I have available and the amount of useful material which I get from Manufacturers, Readers and my Swedish/USA friends. If enough suitable comes in, then I reckon I can keep the NEWS SHEET coming out every 2 or 3 months, trying to make sure that each one is worth having when you get it.

COMPUTERS IN THE 'NEWS'

It has been personally gratifying to see my 'History of Chess Computers pt. 2' in the latest Issue of KINGPIN. Jonathan Manley has asked me to write something for each Issue and I intend a review of Novag's FORT, Fidelity's PAR EXCELLENCE and Mephisto's REBELL in their next one.

The DHSS has its own Chess Magazine which is good enough to make it worth trying to get a job there! Here also there is a Chess Computer column each Issue and I enjoyed reading an appreciative review of my own NEWS SHEET in the last one.

Finally the more erudite of my NS Readers might have seen the Chess coverage in a recent TIMES EDUCATIONAL SUPPLEMENT. There was interesting coverage by Raymond Keene on the Kasparov v Short Channel 4 Match as well as an article introducing some of Britain's latest youngsters who are showing real promise. Finally was my own Article on Chess Computers with particular emphasis on their value for those learning to play or wanting to improve their game. It is always good to see Chess getting an airing in daily and weekly publications and the TIMES EDUCATIONAL effort seemed well presented to me.

Incidentally, have Readers noted that the INDEPENDENT has a daily Chess Column? A day of news is alternated with a problem and the 'news' day carries either tournament results, comment on the Chess scene, or a position and analysis from play. And the Independent's Chess Editor is none other than Ruy Lopez apparently, which must mean we are returning to the pre-Flood days of longevity!

GENERAL NEWS.

Very thin this Issue.

I hear that CXG has a 68000 Processor Chess Computer coming out in 4 versions. A 2000-2050 Rating in press-sensory and auto-sensory and a 2200 Rating also in the 2 board versions. Dates and prices not known.

FIDELITY's new Computer also on 68000 series equipment is expected in July. Fidelity sources tell me that it is now beating the Mephisto 68000 but I have a complaint note from the USA that the Fidelity entries for their National Open didn't turn up, though prize money had been offered for the best games against Fidelity Machines.

Perhaps Fidelity knew something others didn't as the Computer entries which did arrive had a hard time of it! A SciSys LEONARDO (not clear if it was a MAESTRO or an Experimental) got 2 out of 6 and a Rating of only 1933 (remember British equivalents before re-calculating to BCF are about 75 Elo less). HiTech and Lachex (main-framers) also disappointed with 3½/6 (2268) and

2½/5 (2145) respectively. Meanwhile Navag was at a Los Angeles tournament getting 3/5 for 2284 with a FORTE at 6MHz and 3/5 for 2331 with their EXPERT bit-slice which runs at around 20MHz.

It is interesting to see the Expert bit-slice do so well as we had one at Eureka for a short time recently, running at 16MHz. Although it was very strong in its end-game play and obtained one or two good wins through that, our overall feeling was that it didn't show the improvement over the 5 and 6MHz versions that we had expected in the middle-game.

I told you news was sparse!

OPENINGS or NO OPENINGS, that is...

In NS/12 I proposed that specific Openings be used in Computer v Computer games, and that all Openings be used in reverse... i.e. each Machine played both the White and Black sides of each Opening used.

Friends doing similar work to myself in Sweden for PLY Magazine have written at some length on this subject and are, it transpires, extremely opposed to the idea. Not only do they feel that the Computers must always be allowed to choose their own Openings, but where 2 Computers leave their Opening Books in exactly the same position as in an earlier game, they will continue that game whereas I would always re-start it. "If the Computer is foolish enough..." (quote), and "Do you think it would be fair if Kasparov and Karpov played about" (he means 'played for' not 'played about'!!) "the Title with pre-decided Opening lines?"

Full credit must certainly be given to the Swedish folk for their determination to get their Ratings as accurate as they can and in comparison with their Swedish Rating levels. Indeed they are now refusing all Match Results from anywhere other than through their own tests to make sure that no 'fudged' Results are included in error.

The main argument which persuades me to return to Testings using the Computers own Openings only is a point which is the exact reverse of part of my thinking. I was trying to restrict the width of the Openings to pre-selected ones to make

comparisons easier. E.g. if MEPHISTO AMSTERDAM beats XYZ 10-6 using a certain set of Openings, and MEPHISTO DALLAS then wins 11-5 using the same Openings, we have a direct comparison between the 2 Mephisto programmes. However Goran Grotting asks (validly) "What is the value of learning that the AMSTERDAM plays the King's Gambit well IF IT WOULD NEVER PLAY IT LEFT TO ITS OWN CHOICE?"

Good point?! I think so. What is the value of a Machine having a carefully prepared Opening Book (such as a GM has in readiness for a Match), utilising Openings that are intended to suit that particular Computer's style of play, if I then completely over-ride them and put in the Openings I would like it to play?

So... I've changed my mind back again... and will try to avoid reading the relevant parts of NS/12 to make sure that it doesn't change my mind further (at least till NS/15 or 16!).

The EFFECT of SPEED INCREASES

This area has been fully covered in NEWS SHEETS 6 and 11.

The Table from 6 was up-dated in 11 to allow for the falling off of the rate of increase as speeds increased, as shown by Thompson and Levy.

Since then both Goran Grotting and Larry Kaufman have written with doubts over the basic premise of a 100 Elo increase for a doubling of Speed even at the lower ends. Their current views suggest a figure of 80. I have decided to re-issue my Table and the Computer Programme which produces it, and hope I will be forgiven by my 'advisers' for using a figure of 90 Elo for doubling instead of either the 100 or 80.

```
10 PRINT "clear screen"
15 INPUT "Speed Required: ";RA
20 G=INT(LOG(RA)*225/LOG(5.6+RA*3/200)+.5
25 PRINT "RATING SPEED ";RA;TAB(20)"GAP";
   G
30 PRINT "Another Y/N"
35 GETQ$:IFQ$="Y"THEN15:REM or 10 if you
   want to clear screen
40 IFQ$="N"THEN50
45 GOT035
50 END
```

The TABLE now produces a 90 Elo increase for doubling 1MHz to 2MHz, and 67 Elo increase from 30MHz to 60MHz.

1 MHz	0	20 MHz	380
1.5	53	22	391
2	90	24	401
3	143	26	410
3.6	166	28	418
4	180	30 MHz	425
5	209	32	432
5.5	221	34	438
6	232	36	444
7	251	38	450
8	268	40 MHz	455
9	283	42	460
10 MHz	296	44	464
11	308	46	468
12	319	48	472
13	328	50 MHz	476
14	337	52	480
15	346	54	483
16	354	56	486
18	367	58	489
		60 Mhz	492

To use the TABLE simply compare the ELO figures for the 2 different SPEEDS, then deduct the lower figure from the greater.

E.g. NOVAG EXPERT/4MHz 180
 NOVAG EXPERT/5MHz 209

Therefore we may expect the Novag Expert running at 5MHz to be 29 Elo stronger than the 4MHz version.

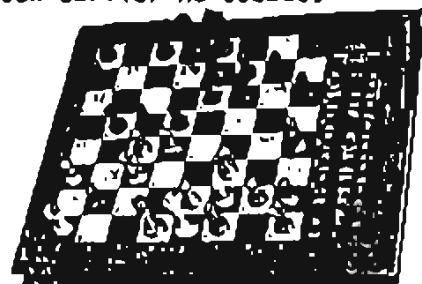
NOVAG EXPERT/6MHz 232
 So we may expect the Novag Expert at 6MHz to be 52 Elo stronger than the 4MHz version, and 23 Elo stronger than the 5MHz.

Actual RATINGS (Spring 1987) are:-

NOVAG EXPERT/4 1973
 NOVAG EXPERT/5 2008
 NOVAG EXPERT/6 2030

These figures (and similar comparisons between other Machines) are close enough to recommend the accuracy of the TABLE.

NS READERS who have 'seen it all before' are asked to be patient with repetitions such as these for, though adjusted, the figures are fairly similar to those previously published. However the question of SPEED constantly arises with newer Readers who haven't seen earlier NS Issues.



RESULTS * * * RESULTS * * * RESULTS * * * RESULTS * * * RESULTS * * * RESULTS * * *

First the full up-to-date list from SWEDEN. Remember that these now ONLY include their DWN Results.

MEPHISIO DALLAS v MEPH AMSTERDAM 15-14 v MEPH REBELL 15½-4½ v NOV FORTE 14½-5½
v FID PAR EXCELLENCE 23½-8½ v CONCH PLYMATE/6 25-3 v FID EXCELLENCE/4 12½-2½
v SCI TURBOSTAR 432 20-4 v NOV SUPER CONST 4-1

MEPH AMSTERDAM v FID AVANT GARDE 66½-42½ v MEPH REBELL 12½-7½ v NOV FORTE 28-15
v FID PAR EXCELLENCE 28-12 v CONCH PLYMATE/6 22-7 v FID EXCELLENCE/4 13-3
v NOV EXPERT/4 5-3 v MEPH MM2 9-1 v MEPH SUPER MONDIAL 13-7
v SCI TURBOSTAR 432 20-11 v FID EXCELLENCE/3 17½-4½ v NOV SUPER CONST 54½-14½
v MEPH BLITZ 3½-½ v NOV QUATTRO 11½-3½ v FID PRESTIGE 3-0

MEPH REBELL v FID PAR EXCELLENCE 10-15 v NOV FORTE 14-11 v CONCH PLYMATE/6 12-8
v NOV EXPERT/4 5½-5½ v SCI TURBOSTAR 432 10½-9½ v FID EXCELLENCE/3 14-6
v MEPH BLITZ 2-0

FID AVANT GARDE v MEPH REBELL 10-10 v FID PAR EXCELLENCE 20½-20½ v NOV FORTE 10½-9½
v CONCH PLYMATE/6 15-9 v FID EXCELLENCE/4 13-7 v NOV EXPERT/4 50-35
v CONCH PLYMATE/4 14½-10½ v MEPH SUPER MONDIAL 11-9 v SCI TURBOSTAR 432 20-9
v FID EXCELLENCE/3 14-7 v NOV SUPER CONST 15-5 v SCI SUPERSTAR 36K 16-5
v NOV QUATTRO 15½-4½ v FID SENSORY 12 6-4 v CONCHCESS/2 1-1 v NOV CONST/2 18-2

NOV FORTE v CONCH PLYMATE/6 39½-35½ v FID EXCELLENCE/4 9-14 v CONCH PLYMATE/4 7-3
v FID ELEGANCE 8½-11½ v MEPH SUPER MONDIAL 12-8 v SCI TURBOSTAR 432 10½-9½
v FID EXCELLENCE/3 10½-12½ v NOV SUPER CONST 13½-6½ v SCI SUPERSTAR 36K 4½-1½
v NOV QUATTRO 7-1 v FID SENSORY 12 16½-3½ v CONCHCESS/2 13-7
v NOV CONST/3.6 16-4 v NOV CONST/2 7½-1½ v SUPER ENTERPRISE 8-2

FID PAR EXCELLENCE v NOV FORTE 18½-13½ v CONCH PLYMATE/6 46½-41½
v FID EXCELLENCE/4 17½-12½ v NOV EXPERT/4 10-10 v CONCH PLYMATE/4 5½-4½
v MEPH MM2 10½-9½ v MEPH SUPER MONDIAL 11½-8½ v SCI TURBOSTAR 432 12½-7½
v FID EXCELLENCE/3 11½-8½ v NOV SUPER CONST 44½-25½ v SCI SUPERSTAR 36K 16½-3½
v NOV QUATTRO 2-0 v FID SENSORY 12 16-4 v CONCHCESS/2 16-4
v NOV CONST/3.6 13-7

CONCHCESS PLYMATE/6 v FID EXCELLENCE/4 91½-71½ v NOV EXPERT/4 11½-8½
v FID ELEGANCE 5½-4½ v MEPH SUPER MONDIAL 6½-5½ v SCI TURBOSTAR 432 20½-14½
v FID EXCELLENCE/3 14½-14½ v NOV SUPER CONST 23-6 v SCI SUPERSTAR 36K 11-9
v NOV QUATTRO 11-9 v FID PRESTIGE 4-1 v FID SENSORY 12 12½-7½ v CONCHCESS/2 15½-4½
v NOV CONST/3.6 21½-4½ v SUPER ENTERPRISE 2-0

FID EXCELLENCE/4 v NOV EXPERT/4 24-22 v CONCH PLYMATE/4 15-14 v MEPH MM2 12-8
v MEPH SUPER MONDIAL 8½-4½ v SCI TURBOSTAR 432 15-13 v FID EXCELLENCE/3 2½-½
v NOV SUPER CONST 18½-7½ v CONCHCESS/4 17-7 v MEPH BLITZ ½-2½ v NOV QUATTRO 13-7
v SCI SUPERSTAR 36K 10½-7½ v CONCHCESS/2 17-3 v NOV CONST/3.6 24-4
v NOV CONST/2 2-0

NOV EXPERT/4 v CONCH PLYMATE/4 5½-14½ v MEPH MM2 4-6 v FID ELEGANCE 11½-8½
v SCI TURBOSTAR 432 7½-8½ v FID EXCELLENCE/3 22-13 v NOV SUPER CONST 16½-12½
v CONCHCESS/4 4½-2½ v MEPH BLITZ 2-0 v SCI SUPERSTAR 36K 11-9 v CONCHCESS/2 14-6
v NOV CONST/3.6 13½-6½ v SUPER ENTERPRISE 10-1

CONCHCESS PLYMATE/4 v FID ELEGANCE 25-22 v SCI TURBOSTAR 432 9½-10½
v FID EXCELLENCE/3 11½-8½ v NOV SUPER CONST 38½-27½ v SCI SUPERSTAR 36K 13-7
v FID SENSORY 12 10-10 v NOV CONST/3.6 16½-9½ v CONCHCESS/2 11-9

MEPHISIO MM2 v SCI TURBOSTAR 432 16½-19½ v FID EXCELLENCE/3 7½-8½
v NOV SUPER CONST 8½-6½ v SCI SUPERSTAR 36K 15½-4½ v FID SENSORY 12 9-5
v NOV CONST/3.6 14-6 v NOV CONST/2 4-1

FID ELEGANCE v SCI TURBOSTAR 432 16½-13½ v FID EXCELLENCE/3 ½-1½
v NOV SUPER CONST 9-8 v CONCHCESS/4 28½-23½ v FID SENSORY 12 11½-3½
v CONCHCESS/2 7½-4½ v NOV CONST/3.6 17½-6½ v NOV CONST/2 14-6
v SUPER ENTERPRISE 10½-1½

MEPH SUPCR MONDIAL v SCI TURBOSTAF 432 8½-11½ v FID EXCELLENCE/3 9-11
 v CONCHESS/2 2-0
SCI TURBOSTAR 432 v FID EXCELLENCE/3 13-12 v NOV SUPER CONST 31½-29½
 v CONCHESS/2 10-9 v MEPH BLITZ 17½-9½ v SCI SUPERSTAR 36K 10-10
 v NOV QUATTRO 4-3 v FID PRESTIGE 7-4 v FID SENSORY 12 12½-3½ v CONCHESS/2 11-7
 v NOV CONST/3.6 14½-7½ v NOV CONST/2 18-7 v SUPER ENTERPRISE 7-1
 v SCI TURBO 24K 2-1
FID EXCELLENCE/3 v NOV SUPER CONST 30½-21½ v CONCHESS/4 14½-10½
 v MEPH BLITZ 4-5 v SCI SUPERSTAR 36K 13½-6½ v NOV QUATTRO 15-5
 v FID SENSORY 12 14½-5½ v CONCHESS/2 13-9 v NOV CONST/3.6 14-6
 v NOV CONST/2 22-4 v SUPER ENTERPRISE 9-5
NOV SUPER CONST v CONCHESS/4 46-44 v MEPH BLITZ 9½-7½ v SCI SUPERSTAR 36K 11½-9½
 v NOV QUATTRO 14½-5½ v FID PRESTIGE 9½-10½ v FID SENSORY 12 10-3
 v CONCHESS/2 12½-11½ v NOV CONST/3.6 19½-5½ v NOV CONST/2 25-11
 v MEPH MONDIAL 10-4 v SUPER ENTERPRISE 10½-1½
CONCHESS/4 v SCI SUPERSTAR 36K 6-8 v FID PRESTIGE 27-12 v FID SENSORY 12 8½-6½
 v NOV CONST/3.6 10½-9½ v NOV CONST/2 8½-2½ v SUPER ENTERPRISE 5½-4½
SCI SUPRSTAR 36K v NOV QUATTRO 10½-9½ v CONCHESS/2 11-7 v NOV CONST/3.6 11½-8½
 v NOV CONST/2 11-9 v MEPH MONDIAL 10½-9½ SCI TURBO 16K 15-5
NOV QUATTRO v FID SENSORY 12 8½-11½ v CONCHESS/2 13-7 v NOV CONST/3.6 12-8
 v SUPER ENTERPRISE 14½-6½
FID PRESTIGE v CONCHESS/2 3½-3½ v NOV CONST/3.6 5-5 v NOV CONST/2 15½-6½
FID SENSORY 12 v CONCHESS/2 11½-8½ v NOV CONST/3.6 12½-16½ v NOV CONST/2 7-5
 v SCI TURBO 24K 15-5
CONCHESS/2 v NOV CONST/3.6 6½-8½ v NOV CONST/2 12½-7½ v MEPH MONDIAL 1½-4½
 v SUPER ENTERPRISE 12½-7½
NOV CONST/3.6 v NOV CONST/2 20-14 v MEPH MONDIAL 9½-6½ v SUPER ENTERPRISE 1-1
 v SCI TURBO 24K 15-5 v SCI TURBO 16K 16-4
NOV CONST/2 v MEPH MONDIAL 13-7 v SUPER ENTERPRISE 29-15 v SCI TURBO 16K 16-4
MEPH MONDIAL v SCI TURBO 16K 11½-8½
SUPER ENTERPRISE v SCI TURBO 16K 5-5

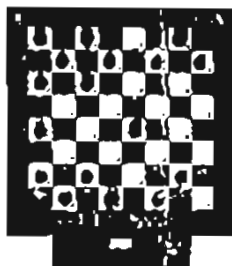
An enormous amount of work has been done by our Swedish friends to produce such a list and we give them our thanks.

TOURNAMENT at 1, 2 and 3mins per move by Jan Louwman, Holland.

	MR	MA	NF	FPE	Tot/18	Elo
MEPH REBELL	*	3½	3½	3	10½	2119
MEPH AMSTERDAM	2½	*	3½	3	9	2037
NOV FORTE	2½	2½	*	3½	11½	2054
FID PAR EXCELLENCE/8 (!)	3	3	2½	*	11½	2033

Reproduced from DIE SCHACHWOCHE, 15 Jan 1987, the leading positions from a 32 player TOURNAMENT. LOOK who comes in 11th... and look at the company ~~he~~ it was in!!

1. Panno	g	2515	6.0
2. Ricardi	f	2435	5.5
3. Rubinetti	i	2415	5.5
4. Rosetto	g	2310	5.0
5. Mendez		5.0	
6. Estepan		5.0	
7. Gomez Baillo	i	2455	5.0
8. Hoffman	f	2315	4.5
9. Morgado	i	2295	4.5
10. Dobson		2250	4.0
11. Meghista Amsterdam		4.0	
12. Laplaza		4.0	



BRITISH RESULTS

MEPH DALLAS 68020... 7
 MEPH AMSTERDAM..... 3

MEPH DALLAS 68020... 11
 NOV FORTE..... 5

(the letter from Gerald Murphy and an impressive result for the FORTE).

MORE BRITISH SCORES coming in:-

NOV FORTE 9 v CHESSMASTER 2000 5. The Chessmaster 2000 was running on an Ametrad Computer (the IBM compatible).

NOV FORTE 9 v SCI TURBO KASPAROV 7. NOV FORTE 9 v CONCHESS/2 7.
SCI TURBO KASPAROV 6 v CONCHESS/2 2 (from Kevin Doubleday).

MEPH DALLAS 68020 3½ v FID PAR EXCELLENCE ½ (Charles Palmer)

From SCHACH & SPIELE

The FORZ Open. The Elo figures I show are re-calculated from Ingo figures and adjusted to British levels as well as I can. It ought to be noted that SciSys who also sent me outline information of the Result (plus a fine TURBO KASPAROV win which is included in this NS) claimed that the LEONARDO had done nearly as well as the DALLAS. According to my calculations, however, it was the TURBO KASPAROV which got closer to DALLAS. It is always difficult converting Ingo figures which work in reverse to ours! I.e. 1 is brilliant, a rating of 100 is much more ordinary!

MEPH DALLAS 68020 5½/9 against 2053 Elo = 2142
SCI LEONARDO M/6MHz 4½/9 against 1959 Elo = 1959
SCI TURBO KASPAROV/4 4½/9 against 2049 Elo = 2049

TOURNAMENT

MATCHES

	40		
SCI LEONARDO M/6	22½	2050	MEPH REBELL 22 v NOV SUPER CONST 18
NOVAG FORTE/6	22	2025	MEPH AMSTERDAM 14 v NOV FORTE 10
MEPH REBELL	19½	1972	MEPH DALLAS 68020 8½ v MEPH AMSTERDAM 3½
SCI TURBO KASP/4	19	1979	
FID EXCELLENCE/4	17	1933	

CROSS-TABLE from Larry Kaufman's Tests in USA at 30secs per move:-

<u>All Matches 16 Games</u>	md	ma	nf	ne6	nr	fpe	fe4	fe3	atk	nq	nce	msm
MEPH DALLAS 68000	*	9										
MEPH AMSTERDAM	7	*	13½	6½	12½	12	13½					
NOV FORTE		2½	*		9	8	7		10			8½
NOV EXPERT/6		9½		*		10	9		8½			
MEPH REBELL		3½	7		*	8½	7½	10½	7½		9	
FID PAR EXCELLENCE		4	8	6	7½	*			9		10	
FID EXCELLENCE/4		2½	9	7	8½		*		9		8½	8
FID EXCELLENCE/3					5½			*		11½	10½	
SCI TURBO KASP/5½			6	7½	8½	7	7		*	11		
NOV QUATTRO								4½	5	*		
NOV SUPER CONST					7	6	7½	5½			*	
MEPH SUPER MONDIAL			7½				8					

also:- MEPH DALLAS 68020 13 v FID AVANT GARDE 3.
MEPH SUPER MONDIAL 9 v FID AVANT GARDE 7.
FID PAR EXCELLENCE/8 10½ v NOV EXPERT/6 5½
FID PAR EXCELLENCE/8 5½ v MEPH REBELL 2½
FID PAR EXCELLENCE/8 1½ v MEPH DALLAS 68000 6½
NOV FORTE 2 v MEPH DALLAS 68000 6
MEPH DALLAS 68020 5 v FID PAR EXCELLENCE 3
MEPH DALLAS 68020 6 v NOV EXPERT/6 2

COMPUTERS FOR SALE.... SECOND HAND ** SECOND HAND ** SECOND HAND ** SECOND HAND ** SECO

Baruch Katz, 34 Walseley Road, London NE8 8RP (Tel 01 340 1244) has a NOVAG FORTE purchased 12/1986, to be sold for personal reasons. £175.

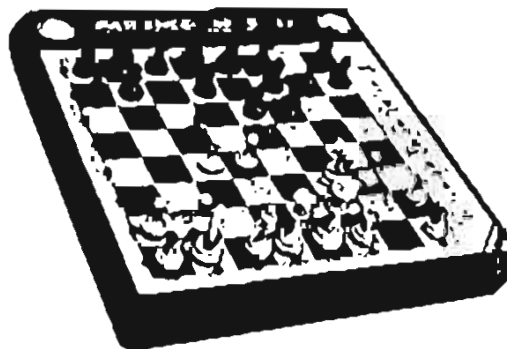
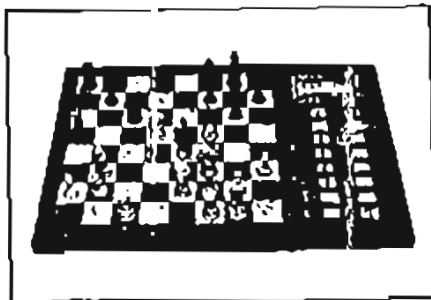
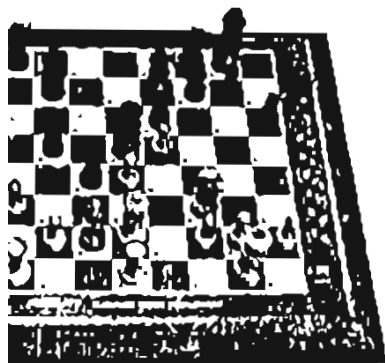
John R Owen, 2 Ffordd Derwyn, Penyffordd, Chester CH4 0JT (Tel 0244 547323) has a NOVAG FORTE purchased Nov 1906. Hardly used, boxed like new £170.

NB. Would those wishing to advertise please note there is a charge of £2 for an Advert. Please send money with Advert (I've let the above off trusting you to send it 'in arrears').

PAUL HALLS (0952 40210) has various 2nd. hand stock including NOVAG EXPERT/4MHZ at £250 and a NOVAG QUATTRO at £90, both as new.

TERRY KNIGHT at COMPETENCE (0491 34563) has FIDELITY ELITES, FIDELITY ELEGANCE, FIDELITY EXCELLENCE/3's and MEPHISTO 3 MODULARS. Also GGM's and CAPABLANCA Cartridges. Ring him for details; most are as new and come with 12 month labour and parts guarantee.

At EUREKA we have FIDELITY SENSORY/9 for £55, NOV CONSTELLATION/2s for £60 and CONSTELLATION/3.6 for £80. Also a MEPHISTO AMSTERDAM in MUNICH Board £650 (private sale). Occasional NOVAG SUPER CONSTELLATIONS for around £140. All incl. Adaptors and the Novags come with 12 month guarantee in the same way as brand new Machines. Tel. 0273 202016.



FIDELITY ELEGANCE

NOVAG FORTE

FIDELITY PAR EXCELLENCE

WORLD CHAMPIONSHIP Positions to try on your COMPUTER.

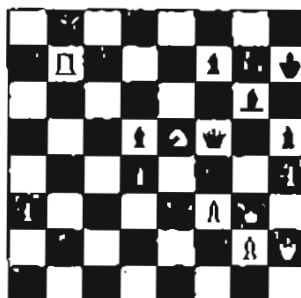
The first is from Game 11 where Karpov played Rxc6! Stated to be 'an amazing novelty' prepared by his analytical team, yet quite a few Computers are able to find this when set at 3mins per move. Then test your Computer's reply! If the Rook is taken then Ne7+ is very strong for White; so Black must play exf4 as in the Match game.

The second is the sealed Adjournment move from Game 22 which was the only way to win. Readers will remember that many commentators overnight expected a Draw, though by morning they had found the winning route. But had the World Champion after taking just 17 minutes before sealing? He had! So far I have only found the Novag pair, EXPERT and FORTE able to get this (one on their 3 min level (indeed, most fail even overnight!)). The move you are looking/waiting for is 41 Nd7!

Game 11



Game 22



From the 17th, Porz Open, Christmas 1986 (notes kindly provided by Roos of Germany, an estimated 225 BCF rating).

White ROOS, Black SciSys TURBO KASPAROV, Catalan Queen's Gambit.

1 d4 Nf6 2 c4 e6 3 g3 Bb4+ 4 Nd2..

4 Bd2 is most frequently played here.

.. Nc6 5 Ngf3 d5

This is the first time I am confronted with this development.

6 Qc2 dxc4 7 Qxc4 O-O 8 Bg2 Qd5 9 O-O Rd8 10 Qxd5..

10 e3 might be better here, so that B/c8 doesn't come into the game.

10.. exd5 11 a3..

White's position gets worse after this unimaginative move with 12 b4. A better plan would certainly be to exchange the Black Bishops by Nb3 and Bf4.

11.. Bd6 12 b4 Re8 13 e3 Bf5

Now I should have played b5.

14 Bb2? Bd3 15 Rfc1 a5!

Extremely strong. I had not expected this from Turbostar.

16 bxa5..

This is forced now. Black is clearly more active, thanks to the open a-file.

16.. Rxa5 17 Ne5!..

This is my only chance to obtain counterplay, since Black cannot realise the simple plan with Rea8.

17.. Bxe5 18 dxe5 Ne4!

Ng4 is apparently good. Nf3 follows and, since Black ought not to capture on e5 (c7 hangs), the Knight will soon have to move to h6.

19 Nf3..

After Nxe4 dxe4 then e5 is lost in the long term.

19.. Bc4 20 Bf1 Bxf1 21 Kxf1 Kf8?!

As becomes evident later, the King returns to g8 in due course because of the tactical possibilities on the a3-f8 diagonal.

22 Ke2 Nc5 23 Rab1..

Here White should play Bc3. Eg 23.. Ra8 24 Bb4 Nxb4 25 axb4 Ne6. Black's better Pawn structure assures a rather better game.

23.. h6?

Unnecessary, and still permits Rc3!

24 Rc2? Kg8! 25 Nd2..

e5 cannot be captured because of Bc3 besides Bxe5 and Rxc5.

25.. Rb5 26 Bd4 Rxb1 27 Nxb1 Nd7 28 Rb2..

Beware! f4 is followed by f6.

28.. b6 29 Rc2 Re6 30 f4 f5 31 Kf3?..

The obvious move was g4. But I feared the piece sacrifice fxg4 32 f5 Rxe5.

31.. g5! 32 h3 h5 33 Bb2 g4+ 34 hxg4?..

Now Black can exploit the h file (attack on g3 via Rh3 and Ne4).

34.. hxg4+ 35 Kg2 Nc5 36 Nc3 Ne7 37 Ne2 Kf7 38 Nd4 Rh6

Now Black has the h file.

39 Nb5 c6 40 Nd6+ Ke6 41 Bd4 Na4

Notably better than a passive Nd7.

42 Rd2..

White was in time trouble also now.

42.. Rh3 43 Rd1 c5 44 Ba1 Rh7 45 Nb5 Nc6 46 Rc1..

e4 offered a good opportunity here, Eg 45 e4 fxe4 47 f5+ Kxf5 48 Rf1+ Ke6 (Kg5 49 Nd6 with counterplay because of the e5 Pawn and Black's King position) 49 Rf6+ besides Rd6+, Or 46.. d4 47 exf5+ Kxf5 48 Nd6+ besides Re1.

46.. Na5 47 Nd6 Rh3 48 Rb1 Nc4! 49 Nxc4 dxc4 50 Rd1..

The time control has been reached, but only a ruin is left!

50.. Rh8 51 Rd2..

Only 51 e4 offered a hope, but Black wins with.. fxe4 52 Rd6+ Ke7 53 f5 c3 54 f6+ Kf7 55 Rd7 Kg6! 56 Rg7+ Kh6 57 e6 Nd5 58 Rf7 Kg6.

51.. b5 52 Rc2 Kd5 53 Rd2+ Ke4 54 e6 Re8 55 Kf2..

I could have resigned here.

55.. c3 56 Bxc3 Nxc3 57 Rd6 Kd5 58 Rc6 0-1

Never play without a plan, even against Computers!

A SELECTION of un-annotated Games from the 1986 WORLD MICRO is Dallas.

MEPHISTO 1 - FIDELITY A

1 c4 e5 2 d3 d6 3 f3 g4 4 d4 d7 5 dxe5 dxe5 6 h3 e6 7 e4 g6 8 e2 b4 9 g5 c3+ 10 bxc3 h6 11 f6 f6 12 b1 c5 13 b5 b6 14 d2 g6 15 f3 O-O 16 a3 e8 17 c2 d3+ 18 f1 g5 19 d5 d5 20 cxd5 c5 21 g4 c6 22 c4 h5 23 f3 h4 24 e2 g6 25 c1 h6 26 b1 f4 27 b3 b3 28 b3 e8 29 d3 f5 30 e3 cxd5 31 cxd5 c8 32 d3 fe4 33 e4 f8 34 f3 c1 35 f8+ f8 36 b3 c3 37 a2 c5 38 b1 xa3 39 d6 a6+ 40 e1 c4 41 h7 c1+ 42 xc1 xc1+ 43 e2 e8 44 f5 c4 45 d7+ d8 46 e6 d4 47 e3 a5 0-1

CYRUS B - MEPHISTO 1

1 e4 c6 2 c4 d5 3 cxd5 cxd5 4 exd5 d5 5 d3 d6 6 d4 f6 7 f3 e6 8 e5 d6 9 xc6 bxc6 10 e2 e7 11 O-O O-O 12 b1 a5 13 c4 d8 14 e2 c5 15 f4 c6 16 d3 cxd4 17 d4 d4 18 d4 b7 19 f3 c5 20 f1 d4+ 0-1

RECOM A - CYRUS C

1 d4 d5 2 c4 e6 3 d3 c5 4 cxd5 exd5 5 d3 d6 6 g3 f6 7 g2 e7 8 O-O O-O 9 g5 cxd4 10 d4 h6 11 e3 e8 12 c1 d7 13 f4 d4 14 d4 d8 15 d2 e6 16 e3 d4 17 d4 b6 18 f1 d8 19 e3 h8 20 c2 g8 21 f6 d1+ 22 d1 f6 23 d5 d6 24 e4 d8 25 f6+ f6 26 e8+ h7 27 d8 b2 28 e4+ 1-0

FIDELITY A - MEPHISTO 3

1 e4 f6 2 e5 d5 3 d3 d3 4 dxc3 d6 5 f3 d6 6 f4 d7 7 b5 a6 8 a4 b5 9 b3 f5 10 d5 b7 11 g3 dxe5 12 dxe5 O-O-O 13 O-O g5 14 c4 bxc4 15 d7 d5 16 h5 g4 17 f5+ f5 18 d8 g7 19 g4 f5 20 h3 h8 21 c3 h5 22 fe1 e5 23 f1 hxg4 24 hxg4 f3 25 a3 g4 26 e5 e5 27 c1 h4 28 e1 h2 29 a4 f6 30 a1 h4 31 d2 f2 32 c2 e4+ 33 d1 e3 34 e1 f3 35 a2 h1# 0-1

From a SIMULTANEOUS DISPLAY. Notes by the loser - a generous thing for an IGM to do after losing to a Computer.

White JOHN van der WIEL, Black FIDELITY AVANT GARDE. Nov 1986.

1 c4 e5 2 Nf3 Nf6 3 g3 b6 4 Bg2 Db7 5 Nc3 Nc6

The move is not optimal, though not very harmful as yet. The Knight diminishes the effectiveness of the B/b7. Black would do well to develop the KB by playing e6 or g6 and then to castle.

6 0-0 Nd4?

Black cannot really afford this loss of tempo. It is not the first time I notice that Computer problems arise in English Openings rather than others. Why should this be? Is the type of play less manifest or have its variations been neglected in programming? From 7 Nxd4 Bxg2 8 Kxg2 cxd4 9 Nb5 e5, Black would have little to fear... but White's next move neatly refutes Black's intentions.

7 e3! Nxf3+ 8 Bxf3 Bxf3 9 Qxf3 e5?!

Not very positional, and Black must now watch its steps closely. The normal looking move 9 - e6 may be followed by 10 Nb5 (threatening Qxa8) d5 11 Qf4! landing Black in problem areas. The best move would have been ? - Re8 which is more accurate than 9 - a6 10 d4

10 d3? -

White fails to cash in. Two fine options exist. a] 10 d4! when Black is clearly seen to be behind in development. The worst is prevented by 10 - exd4 11 exd4 Be7 but 12 dxc5 bxc5 leaves Black's d/Pawn retarded; he is also saddled with weak d-file squares. b] 10 Nb5! with the almost inevitable sequence 10 - e4 11 Qf4 d6 12 Nc3 Qe7 13 f3 exf3 14 Qxf3 greatly to White's advantage.

10 - Be7 11 e4 0-0

11 - h6 seems more logical because it impedes 12 Bg5 though, in the N v B position White, in order to progress at all, will have to allow the Black B some liberty.

12 Bg5 d6

I expected 12 - Ne8 13 Bxe7 Qxe7 but, after 14 Nd5, White has a pleasant advantage.

13 Bxf6 Bxf6 14 Nd5 Bg5 15 Qg4 h6

White now has a thematic position with an overpowering N on d5. Ultimately the key move f2-f4 should have been more carefully prepared by way of 16 Rael! and 17 Re2 after which White's advantage could not have been gainsaid. I should have dwelt longer on this issue but, as matters stand, one is less careful in a simul.

16 f4 exf4 17 Qxf4 Bf6

The Bishop becomes a major nuisance, stopping White from entrenching his Rooks on the squares he would choose.

18 Rab1 Bd4+ 19 Kh1 Rb8 20 Rf3 -

20 b3 followed by 21 Rbel and possibly Re2 would have been better at this juncture.

20 - b5 21 b3 -

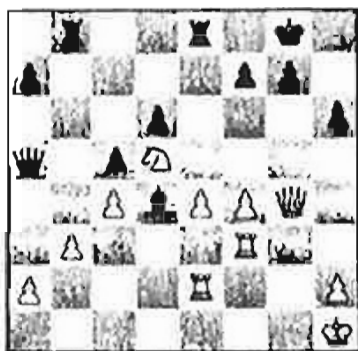
White should have been consistent here with 21 Rg3 as a continuation (threat 22 e5). The reaction 21 - f5 22 Qg6! is mediocre. 21 - bxc4 22 e5 g6 23 Nf6+ is most jeopardising too. A more conservative and solid move is 21 - Kh8 followed, if required, by Rg8.

21 - bxc4 22 dxc4 Re8

Black now has scope for counterplay to be implemented with originality.

23 Re1 Qa5! 24 Re2 (see diagram) Ca3

Position after 24 Re2



A most remarkable positioning of the Black Queen, a long way from home, but related to a tactical threat (I had overlooked. Had I seen it I would have now responded with 25 Kg2 (more accurate than 25 Rf1 Rb7 (not 25 - a5 because of 26 Nc7! and 27 Nb5) followed by a5 and e4). Now 25 - Qc1 26 Rf1 is not too useful but 25 - Rb7 26 a5! threatening 27 Nf6+ is overwhelming. In summary the Black Q-bartie is unjustified, but it trapped me nicely!

25 h4?? Qc1 26 Kh2 Rxe4!

Oops. I overlooked that one. White loses a most important Pawn.

27 Rxe4 Qc2+ 28 Kh3 Qxe4 29 f5 -

White hopes to acquire an endgame which might be difficult for Black to win.

29 - Qe1!

Good thinking. White might create havoc with his f/Pawn, but is greatly hemmed in by the Black Queen.

30 f6 Qh1 31 Kg3 Be5+ 32 Kf2 g6 33 Qh3? -

The decisive error. White would still have had chances to keep the outcome doubtful by aggressive play. E.g. 33 Ne7+ and Nc6, or 33 h5!? The latter looks the better bet.

33 - Qb1

What a position for the Black Queen! White should have moved 34 h5 or 34 Ne7+, but seeks rescue in a Pawn sacrifice which he had 'computed' all too shallowly.

34 a4? Bd4+! 35 Kq3 Rxb3 36 Rxb3 Qxb3+ 37 Kh2 Be5+ 38 Kq2 Qxc4

Discouraging, to say the least. Black would be hard put to win the endgame, but is well able to nullify any mate threat.

39 Qc8+

What else to try (in desperation)?

39 - Kh7 40 Ne7 Qe2+

Lights started flashing now on the Board, in preparation as it were for a Black victory! Being a fancier of parties, I decided to make this one last though the end was but 3 moves away.

41 Kq1 Bd4+ 42 Kh1 Qf1+ 43 Kh2 Be5 mate

Congratulations to AVANT GARDE for the win, and to John van der Wiel for taking his loss in good humour and helping others to appreciate it.

To finish the games v HUMANS, we will let the GM get a ½ in our last Simul!

White LOTHAR SCHMIDT, Black NOVAG QUATTRO. Rembrandt Hotel Simul, 1986.

1 e4 e5 2 Nf3 Nc6 3 Bb5 a6 4 Ba4 Nf6 5 O-O Be7 6 Bxc6 dxc6 7 Qe1 Nd7 8 b3 c5
9 Bb2 Bf6 10 Nc3 g6 11 a4 O-O 12 d3 Bg7 13 Nd2 f5 14 exf5 Rxf5 15 Nd5 Rf8
16 Ne4 b6 17 Qe2 Bb7 18 Ne3 Kh8 19 Rael Qe1 20 f3 Rd8 21 Qf2 Qe6 22 Qh4 Nf6
23 Ng5 Qd7 24 Ng4 e4 25 Nxf6 Bxf6 26 Bxf6+ Rxf6 27 Nxh7 Qd4+ 28 Kh1 exf3 29 Qxf6+
Qxf6 30 Nxf6 fxg2+ 31 Kgl gxf1=Q+ 32 Rxf1 Kg7 33 Ng4 Re8 34 Kf2 g5 35 Rgl Kg6
36 Rg3 Rf8+ 37 Ke2 Re8+ 38 Ne3 Bc6 39 h4 Re5 40 Kd2 Kh5 41 hxg5 Rxg5 42 Rh3+
Kg6 43 Rh8 Rh5 44 Rg8+ Kf6 45 Rcb Rh7 46 Ne4 Bb7 47 Rb8 Rh2+ 48 Kc3 Bd5 49 Nxb6
cxb6 50 Rxb6+ Ke5 51 Rxa6 Re2 52 Rh6 Kf5 53 Rb6 Ke5 54 a5 Re1 55 Kb2 Kd4 56 Rd6
Re2 57 a6 Re6 58 c3+ Ke5 59 Rxe6 Kxe6 60 Ka3 Kd6 61 Ka4 Kc6 62 c4 Bf3 63 Ka5
Be2... Draw agreed - a good result for the sometimes under-rated Quattro.

CHESS COMPUTER RATING LIST, Spring 1987, compiled by ERIC HALLSWORTH

	Elo	BCF
MEPHISTO DALLAS 68020	2265	200
MEPHISTO DALLAS 68000	2188	199
MEPHISTO AMSTERDAM	2133	197
NOVAG EXPERT/6MHz	2030	188
MEPHISTO REBELL	2024	179
FIDELITY AVANT GARDE	2022	178
NOVAG FORTE	2020	178
CONCHESS PLYMATE 8MHz	2020	178
FIDELITY PAR EXCELLENCE & ELITE 2100	2018	177
NOVAG EXPERT/5MHz	2008	176
CONCHESS PLYMATE/6MHz	1997	174
FIDELITY EXCELLENCE/4MHz	1982	172
NOVAG EXPERT/4MHz	1973	171
SCISYS TURBO KASPAROV/4MHz	1964	170
CONCHESS PRINCESS/6MHz	1962	170
MEPHISTO MM2	1955	169
CONCHESS PLYMATE/4MHz	1951	169
MEPHISTO SUPER MONDIAL	1945	168
FIDELITY EXCELLENCE/3MHz	1938	167
FIDELITY ELITE C	1936	167
SCISYS TURBOSTAR 432	1934	167
FIDELITY ELEGANCE/3.6MHz	1928	166
NOVAG SUPER CONSTELLATION/4MHz	1920	165
PSION ATARI-pc	1920	165
MEPHISTO BLITZ	1910	164
CONCHESS PRINCESS/4MHz	1905	163
CHESSMASTER 2000-pc	1902	162
NOVAG QUATTRO	1864	158
FIDELITY PRESTIGE	1848	156
SCISYS SUPERSTAR 36K	1846	155
PSION QL-pc	1840	155
FIDELITY ELITE A	1834	154
CONCHESS/2MHz	1834	154
MEPHISTO 3 EXCLUSIVE	1834	154
FIDELITY ELITE B	1831	153
NOVAG CONSTELLATION/3.6MHz	1830	153
FIDELITY SENSORY 12	1811	151
MEPHISTO MONDIAL	1786	148
WHITE KNIGHT-pc	1770	146
SUPER ENTERPRISE, ADVANCED STAR CHESS and SUPER CROWN	1758	145
COLOSSUS 4-pc	1755	144
FIDELITY ELITE original	1753	144
SCISYS LEONARDO basic	1749	143
NOVAG CONSTELLATION/2MHz	1748	143
AMSTRAD 3D CLOCK-pc	1745	143
COLOSSUS 2-pc	1729	141
FIDELITY SENSORY 9	1700	138
SCISYS TURBO 24K	1680	135
MEPHISTO 2A	1676	134
CHESS 2001	1670	133
SCISYS TURBO 16K	1660	132
CYRUS 2.5-pc	1659	132
SUPERCHESS 3.5-pc	1653	131
MEPHISTO 3A	1651	131
SCISYS SUPERSTAR	1649	131
CONCHESS A0 basic	1643	130
SCISYS EXPRESS 16K	1634	129
GGM + STEINITZ	1632	129
SCISYS MARK 6	1617	127

Please note that the Ratings usually seen in advertisements are those based on the USA scale which works out at 75 Elo points higher than Britain.

We believe this list relates more accurately to British standards, and BCF figures are accordingly shown based on the calculation (Elo-600)/8.

Computers shown thus:-

"Colossus 4-pc"

indicate that the Programme is available on Disk (or Tape) for certain Personal Computer systems. Our Data on the 'pc' Programmes is in some cases fairly nominal and the Ratings therefore more approximate. Those for the dedicated Computers however are usually based on over 100 games for each Machine and can therefore be considered accurate to +/- 25 Elo.

Finally, with permission, our figures take account of USA results after deducting 75 Elo, and Swedish figures after adding 100 Elo plus conversions from INGO figures also used in various Countries. Our LIST is subsequently the most comprehensive available anywhere. It is significant to note that, whilst the Levels of different scales may vary between some Countries, the finished 'Orders of Merit' are almost entirely the same!

Prospective purchasers should take care in assessing a Machine's Rating if they are using an Advertised figure! Many adverts use figures from the American scale (which enables a higher figure to be shown, of course) so that an advertised 2100, say, would equate to 2025 on our scale.

Eric Hallsworth