

Eric Hallsworth
12 Turnpike Close
PEACEHAVEN
EastSussex BN9 8BU

COMPUTER CHESS - NEWS SHEET 14. Summer 1987

"Here we are again; happy as " - well it's true AND WHY NOT? to give you my "every other issue" plug for the real value of BEING a Christian. This time just a verse for you to (please) look up for yourself... John 15:11. There's nothing stuffy or boring about that.

I also enjoy getting the old tripewriter out (the "tripe" occasionally starts from now!) and getting to work on a NEWS SHEET. I am actually typing this Intro. at a point when I have already completed work on 75% of the Issue and I must say I am looking forward to sending it out as I feel there's some good, interesting, occasionally controversial (?) stuff in it.

PACKED FULL OF GAMES

Contents this time include:

- * NEWS from CXG, Fidelity, Mephisto, Novag and SciSys.
- * A few more RESULTS including the U.S. Open.
- * GAMES galore.
- * A Rating mystery solved?
- * Finances
- * Latest Rating List

IN PRINT AGAIN

The good relationship with KINGPIN Magazine continues with my 'Short History..' being followed in Jonathan's summer Issue with a review of Fidelity's PAR EXCELLENCE, Mephisto's REBELL and Novag's FORTE. I have recommended and given the KINGPIN address before, but for new Readers send £1.10 for a sample Issue or £4.40 for a 1 year sub. to Jonathan Manley, Kingpin Chess Mag. 10 Derwent Gardens, ILFORD, Essex IG4 5NA. Jonathan indicates a genuine interest in Chess Computers (the PAR E got a draw with him in last year's British Major) and subscribers can expect some coverage in each Issue (even if its only by me!). I have promised Jonathan that Articles in Kingpin will not be copies of NEWS SHEET material to ensure that readers of both get some variety.

PERSONAL COMPUTER WORLD for the 2nd. time used NEWS SHEET material as a base for their monthly Chess column. I have been particularly pleased to see that the one-time bias towards main-frame Chess Computers has been re-directed to include very much more about the micros. Kevin O'Connell is the usual columnist and provides a nicely annotated game as a rule.

The R.A.F.A started their own glossy Chess Magazine last month. We got a copy at Eureka due to the fact that we had advertised in it - it's certainly a nice production but it came as a shock to find my "Short History.." article in it without permission from either myself or Kingpin and thus without offer of deserved payment for it either!

If any NEWS SHEET readers work for the D.H.S.S and don't get their first class quarterly Chess Publication then let me recommend you write to their Treasurer,

Graham Try, DHSS Room A330, Alexander Fleming House, Elephant & Castle, LONDON SE1. The average Club Player may well find it more interesting and useful than other more established national Magazines! I think subs. are £1 an Issue which is A1 value.

NEWS

Where to start?

Difficult because NOVAG and FIDELITY are going to have new generation Machines coming out at virtually the same time from the look of it. With working at Eureka I obviously know a little more about the Novag machines than the Fidelity, but I want to present them to Readers as fairly as I reasonably can. I'll make a guess that both would want to go first given the choice... and so give Fidelity that position. (If my address has changed again at the top of the next NEWS SHEET, you'll know I've become redundant).

FIDELITY

Are bringing out 2 "new generation" Computers running on 68000 Motorola processors. BOARD will be the same for both - looks quite like the Sensory 9 in that Fidelity is reverting to the "light per square" system after using rank and file lights on the Excellence and Par Excellence. There will be a Display at the back of the Board which is upright and faces the user to show clock times, analysis and evaluations.

Fidelity EXCEL 68000 CLUB will cost £299 and run at 12MHz. There will be increased variety in the Opening Book system compared with Par E which will, I believe, suit the vast majority of people. Competence reports that "it will SIGNIFICANTLY outplay machines of the standard of the EXCELLENCE, PAR EXCELLENCE and ELITE 2100" and also "play in a similar class to the over-£1,000 machines!". The EXCEL 68000 CLUB is expected around mid-July.

Fidelity EXCEL 68000 MASTER will have the same housing and features but also will contain "expensive new developments (details not yet released)". It should be available by mid-September but is first being entered in the US Open Chess Championship to attempt qualification for the grade of official 'US MASTER'. The price will be £499.

NOVAG:

Eureka has an advert. elsewhere in this Issue concerning the FORTE B and the availability of an upgrade to the FORTE B for existing Forte owners. As I have had the chance to use a test version and have reported on it elsewhere with some game-scores I will restrict myself here to saying that David Kittinger has managed to find a way of enhancing the Forte "move search" method as well as re-doing some programming that was having little or no effect on move selection. The result (in the Middle Game mainly) gives the impression that FORTE B is running at 7 to 10MHz in that it is almost always 25% to 50% faster through the Plies and occasionally nearly halves the times required to find key moves.

The "new generation" Machines from Novag are to be a massive 96K, thus building further on the breakthrough achieved in the Forte B by improving the Chess knowledge yet further and extending the Opening Book under the close guidance of a Computer-minded International Master working in total co-operation with David Kittinger.

Novag is staying with the 65c2 Processor, but those worried about Speed comparisons with the faster 68000 machines NEED WORRY NO MORE. Availability of a "Turbo-Booster" will enable immediate operating Speeds of 20MHz and there are genuine expectations of this reaching 40-50MHz in the near future! The cost of

the version in Forte-type Board (SUPER FORTE) will be £299.95, and the cost in the Expert-type Board (SUPER EXPERT) will be £499.95. The SUPER EXPERT will now have ALL of the features previously exclusive to the Forte plus all of the various "new generation" improvements to the display, control panel, level settings, space for user's personal opening book etc. The Turbo-Booster price is still to be announced and will depend on running speed achievement.

CXG

Recently launched an improved version of the 2001 programme in a delightful wooden board called CHESS 3000. Obviously based very much on the Mephisto style (the pieces look like replicas of Mephisto's Exclusive) with slide-out draw but NOT a display it is first class low/medium strength value at £249 because of its quality. I would expect most NEWS SHEET readers will prefer something stronger (it comes in just behind CXG's SUPER ENTERPRISE) but it will well suit the casual player seeking something that looks good!

Due (in the Autumn?) are CHESS 4000, 5000, 6000 and 7000... or is it 5000, 6000, 7000 and 8000? Whatever, they will be 68000 processor Machines available in a choice of 2 programmes in either of 2 boards. Regret I don't know any more yet except that 2000+ Elo is expected for the lower strength and 2200+ for the higher.

MEPHISTO

I have no definite "new" News here. A German Chess Computer magazine appears (I say 'appears' as my German isn't good enough to guarantee fully accurate translation work!) - appears to indicate a REBELL upgrade towards the end of the year. I have asked Mephisto to let me have details for News Sheet readers as soon as they can but haven't heard back yet (which might mean my translating is worse than I thought!?).

The DALLAS 68000 and 68020 programmes continue to create much interest, particularly as results from Sweden and USA suggest there is not as much strength difference between them as one would have expected. I must say that this does not represent my own view in that the testing I have done with them indicates not only that the DALLAS is a useful improvement on the AMSTERDAM (indeed here the Swedes more than agree as they had an (unbelievable) 163 Elo gap between Amsterdam and Dallas 68000 as at 20/4/1987), but that the 'SUPER' DALLAS is clearly stronger again. Larry Kaufman agrees in that in his own games against them (he is an I.M., so he's a better judge than most of us) he also finds the 68020 to be much sharper and stronger... "much harder to beat". On the other hand Larry's Computer v Computer tests have not borne out his personal impressions and in Sweden also the Computer v Computer results are also leaving the DALLAS versions almost equal on their Rating List. A very peculiar situation.

I have also written to Mephisto on this subject and again will keep readers up-to-date when I have replies. At this time there are 2 theories:-

- (1) We are 99% certain that there is a difference between DALLAS 68000 and DALLAS 68020 programming in that, whilst a 2.3x Speed increase always applies in Problem Testing, the increase varies from 1.7x to about 2.1x in actual Chess games. We think that Richard Lang has altered the tapering system in the 'SUPER' version to cause it to do a little more full-width searching (an idea also recommended in a recent edition of the ICCA JOURNAL). One might reasonably have expected this to be a first class way of utilising the extra speed, but it may not be working out as well as hoped?
- (2) Gerald Murphy, following correspondence with Larry Kaufman, suggests the very interesting theory that the DALLAS 68000 has a "contempt" factor... i.e. it

works on the basis that, if your last move was not the one he expected, it was not a very good one! Thus DALLAS 68000 plays more aggressively. But the DALLAS 68020 has a "respect" factor which means that, if your last move was not the expected one, it had better be treated carefully as it might be a very good one; thus DALLAS 68020 would play more passively. I must admit that, in my own games against "SUPER" DALLAS, it hasn't appeared very passive to me! - nor in its games against other Computers in my testing. But I "respect" (pun) Gerald's opinions so pass them on to other Readers who may be able to comment. Certainly one other NS Reader has made different comments on the DALLAS 68020 which would become more understandable in the light of Gerald's theory.

I ought to add that Gerald in his discussions with me was in no way confirming the view from the poor Swedish results for DALLAS 68020 - in fact quite the reverse as he finds them as perplexing as I do and also, like me, is still seeking his first full point off the Computer at anything from Level 3 up. He is also conducting a Match Meph DALLAS 68020 v Meph AMSTERDAM at the moment and has a latest score of 4-1 (3-0=2). Gerald's early view of the Match was that it appeared very one-sided with SUPER DALLAS comfortably the better player.

SCISYS

Nothing "new" as such but Nick Gibbons at SciSys has kindly promised me a replacement LEONARDO with MAESTRO/6MHz programme as soon as he has stocks to spare one. It does seem from world-wide reports that the basic LEONARDO has only moderate strength, as I concluded from my games. However early results from abroad using the MAESTRO/6 suggest a 2000-2025 Rating on my List as soon as I have a little more info. or some results of my own. A MAESTRO/4 should thus achieve 1950-1975 which is clearly better than results I got with the 4MHz previously loaned to me and so I am glad that I ignored and didn't print results as it seems clear that I was right in believing that the 4MHz Module wasn't operating properly.

One thing LEONARDO will do (as will the forthcoming Novags) is analyse and evaluate a game pre-entered whilst you leave it on overnight (or for a couple of days if you want to). The results of its work at whatever time control you asked it to operate can be printed out via the appropriate equipment. A specimen of the LEONARDO MAESTRO/6 work is shown hereunder from game 16 of the 3rd. Kasparov v Karpov Match. We join it, White to play, after move 22 with the position 4rbk1/5ppl/b2plqlp/2np4/1nplP3/N4N1P/1P3PP1/1BBQR1K1

Move	Evaluation (Integer)	Principal variation
	Pos.	Setting: 4hours per Ply.
		Last Move
23 Re1-e3	---	---
Re8-b8	102	21
24 e4-e5	---	---
d6xe5	90	-12
25 Nf3xe5	---	---
Nb4-d3	124	34
26 Ne5-g4	---	---
Qf6-b6	86	-38
27 Re3-g3	---	---
g7-g6	76	-10
28 Bc1xh6	---	---
Qb6xb2	-152	-228
29 Qd1-f3	---	---
Nc5-d7	-158	-6
30 Bh6xf8	---	---
Kg8xf8	-206	-48
31 Kg1-h2	---	---
Rb8-b3	-159	47
32 Bb1xd3	---	---
c4xd3	-191	-32
33 Qf3-f4	---	---
Qb2xa3	145	336
34 Ng4-h6	---	---
Qa5-e7	494	349
35 Rg3xg6	---	---
Qe7-e5	1043	549
36 Rg6-g8+	---	---

the key move?

 RATING MYSTERY SOLVED! ?

I have always been much encouraged to see how closely the ORDER in the various Rating Lists from U.S.A, Sweden, Paul Hales and myself continue to be. But in the past 6 months there has been one notable exception, namely the position of the NOVAG FORTE in the Swedish list where it has always been a comparative 20 or 25 Elo points lower than the minimum I have ever had for it.

I had concluded that the cause of the difference was the fact that my List mixes both Computer v Computer and Computer v Human whereas the popularly used Swedish list is Computer v Computer results only (they have a separate Computer v Human list which does show the NOVAG machines represented there at an average of 62 Elo points higher than their figures in the Computer-tests only list).

But a recent letter from Goran Grotting shows that there is also another reason. Here is the relevant section....

been very close to our present!

There is one other possibility for getting different results with the Forte: You can play in normal mode, random and tounry. I don't believe that there will be a big difference in playing-strength for the different modes, but maybe some!

Most of our games was played in tounry-mode, but some are played in random-mode or normal-mode. What do you use?

3. You had done some calculations of the rating figures for the computers

And now a copy of part of my reply, dated 22 May 1987. I will keep readers informed of any helpful replies and progress in correcting this....

Dear Goran,

Thanks for your letter of the 14th.

I confess to having been stunned by your information that you play some FORTE test games on normal and random-mode. This definitely weakens the FORTE and is quite wrong... the normal and random modes have been deliberately included by Novag to widen the Opening Book for greater variety knowing that Forte will deliberately go for lines then even though it knows they are weaker for itself (i.e. don't suit its inherent style), and to cause Forte to play 2nd. best moves occasionally, again to provide fullest variety. Unless its opponent in matches where these modes are used are equally handicapped (i.e. by using a Mephisto random-move mode or forcing a Machine to use weaker Openings that it wouldn't normally choose to) then it is certainly not right to prejudice the FORTE in this way.

You have previously used comparisons of Kasparov v Karpov to me in discussing 'forced' Openings - you're use of normal and random-modes are doing worse than that to FORTE for you are getting it to use known weaker Openings and make moves it considers inferior to those it would choose in its tournament-mode. As your Ratings are not only published in PLY but also in the ICCA JOURNAL and used by some Distributors you have a responsibility to test Machines on equal terms so that your resulting Rating List represents their relationships on fully equitable basis. I fear that your resultant rating for Novag FORTE is not legitimate ... as you say there may not be 'a big difference' but just 1 draw in a 10 game Match represents a 40 Elo swing and this will be the minimum effect, even if it might not appear much to some, of using the Forte incorrectly. I can certainly see now why the inclusion of your figures has caused my own Rating of the FORTE to drop by some 20 or 25 Elo points and I may have to remove your results from my records. Do you use any other Computers in this way?

Underlining mine - Eric.

U.S. OPEN COMPUTER CHAMPIONSHIP. 1987.

A "temporary" TABLE is shown here pending details of the Cross-Table of Opponents' scores totals.

I understand that the joint winners tied on Opponents' scores, but that 1st. place was given to the FIDELITY on a 2nd. tie-break score (whatever that was). To save any fudging of results where Computers from the same Manufacturers met (and to avoid the alternative system used in the WORLD MICRO where they are not allowed to meet to stop any fiddling of results) where 2 Computers from the same Manufacturer met he was allowed to either play them against each other or to nominate the winner. I gather as a result that FIDELITY 68020 thus was given a 1-0 over FIDELITY 68000/16, NOVAG bit-slice/20 got a 1-0 over NOVAG bit-slice/18 and COFFEEHOUSE/16 was given a 1-0 over COFFEEHOUSE/4 Apple.

An ADJUSTMENT has BEEN MADE to make some allowance for the above facts so that the resultant Performance Ratings are made more accurate. When I have the figures from Opponents played I will re-issue the Table.

	<u>current</u>	<u>score/6</u>	<u>adj.sc</u>	<u>performance</u>
1= Fidelity 68020/25MHz	(2245?)	5½	5.10	2269
Novag bit-slice/20MHz	2190	5½	5.06	2268
3= Novag bit-slice/18MHz,	2180	3½	3.94	2121
NOVAG EXPERT/6MHz	2030	3½		2072
NOVAG FORTE B	(2080?)	3½		2070
6= FIDELITY 68000/16MHz	(2120?)	3	3.40	2054
FIDELITY 68000/12MHz	(2085?)	3		2005
B.P	-----	3		2005
Rex IV	-----	3		2005
Coffeehouse/16MHz	2000	3	2.67	1964
11 PSION/8MHz	1925	2½		1946
12 COFFEEHOUSE/4MHz	1875	2		1885
13 COFFEEHOUSE/4MHz	1875	1	1.33	1796
14 E.G.A.	-----	0		-----

Notes

(1) Fidelity 68020. I don't know whether it was at 25MHz "basic" and achieving around 50MHz execution (being a 68020 Processor) or if the 25MHz is the 'finished' speed. Sorry. Current Rating '2245' is very much a guesstimate.

(2) Novag 20MHz was a PRIVATE entry bit-slice and called Novag Turbo for Tournament identification. Though privately 'bit-sliced' it was still given a free 1-0 over the other bit-slice from Novag.

(3) Novag 18MHz was the "standard" bit-slice Machine which has been getting consistent Ratings of around 2250 in the U.S against some main-frame computers AND humans in challenge matches for money. It is not the same Programme apparently as we had at Eureka (see NS/13); ours was 'an early effort' and the later versions in the States are performing much better.

(4) NOVAG EXPERT/6 - the standard commercial model!

(5) NOVAG FORTE B - as reported on elsewhere in News Sheet. I believe it was running however at 5½MHz compared with the usual 5MHz.

(6) FIDELITY 68000's. Both the speeds and programmes were different I hear for final comparisons ready for commercial release. Changing 6502 code to 68000 is not as straightforward as one might think (and some would have us believe) and the conversion will have been a major task for the Spracklens. Some rumour has it that there is a slight change in playing style from the 'usual' Fidelity. We'll have to wait and see!

(7) Rex IV is by Larry Kaufman himself, but not finished yet and Larry was jubilant to do so well with an embryo programme.

(8) Coffeehouse an IBM-compatible Computer Software package; strength 'just behind Chessmaster 2000 and Psion/8' according to En Passant, Canadian Chess Mag.

Also from USA (not Larry Kaufman, but does use selected Openings from MCO).

FID PAR EXCELLENCE v NOV SUPER CONST 20½-17½

From R. Kennerley:- MEPH DALLAS 68000 v NOV EXPERT/6 2-1

From Schach & Spiele:-

NOV FORTE v MEPH REBELL 21-19 MEPH REBELL v MEPH 3A 8-2

MEPH DALLAS 68020 v MEPH SUPER MONDIAL 5½-1½ PSION/8 v SCI LEONARDO M/6 5½-4½

The performance of FID PAR EXCELLENCE in being (as far as I know) the first Micro to "down" the MEPH AMSTERDAM with its success in the West Winds Tournament is referred to elsewhere. The DALLAS versions didn't last as long! How's this Result for a surprising double!

Ergebnistabelle des 2. Welser Schachcomputer-Turniers 1987

	1	2	3	4	5	6	7	8	9	10	Sum.	S-B	NEWS SHEET Ratings
1. Fidelity Par Excellence	□	0	1	1	1	1	0,5	1	1	1	7,5		2288
2. Mephisto Dallas 32 Bit	1	□	0,5	0,5	1	1	0,5	1	1	0,5	7,0	29,50	2219
3. Mephisto Dallas 16 Bit	0	0,5	□	1	1	1	1	0,5	1	1	7,0	25,50	2224
4. Novag Expert /4MHz	0	0,5	0	□	1	1	0,5	1	0	1	5,0		2070
5. Novag Forte	0	0	0	0	□	1	1	0,5	0,5	1	4,0		1977
6. Mephisto Modular MM-II	0	0	0	0	0	□	1	1	0,5	1	3,5		1939
7. Novag Super Constellation	0,5	0,5	0	0,5	0	0	□	0,5	1	0	3,0	14,25	1899
8. Mephisto Rebell 5,0	0	0	0,5	0	0,5	0	0,5	□	1	0,5	3,0	11,00	1889
9. Mephisto Super Mondial	0	0	0	1	0,5	0,5	0	0	□	1	3,0	10,75	1895
10. Fidelity Elegance	0	0,5	0	0	0	0	1	0,5	0	□	2,0		1809

GAMES BONANZA!

At last a win for a G.M against a Computer. Here are the moves from a Simul. last month in which George Morris entered his MEPHISTO REBELL against Jon Speelman. The Computer was one of 39 boards, Jon winning 38-0=1!!

JON SPEELMAN (White) v MEPH REBELL 1 Nf3 Nf6 2 d4 e6 3 c3! Be7 4 Bf4 d5
 5 e3 0-0 6 Bd3 c5 7 Nbd2 Bd7 8 Ne5 Qb6 9 Qb1 cxd 10 exd Bb5 11 0-0 BxB
 12 QxB Nh5 13 Be3 f6 14 Nf3 Bd6 15 c4 Nf4 16 Qc2 Na6 17 c5 Qc7! 18 a3 Rad8
 19 b4 g5 20 BxN BxB 21 g3 g4 22 Nh4 Bg5 23 Ng2 Bh6 24 Nb3 Qg7 25 Rael Nc7
 26 Na5 Rb8 27 Qd3 a6 28 a4 Rfe8 29 b5 axb 30 axb Qg6 31 Qe2 e5 32 b6 Ne6
 33 Nb3 Nxd4 REBELL registered +0.60 playing this move, but the luxury of 3 to 5
 mins per move is over (George sent times for each Rebell move) as others in the
 simul. are dropping out now. Of course Rebell isn't really a Pawn up - indeed with
 doubled isolated Pawns the more forward cannot be fully defended and so, although
 they are passed Pawns, it is the 2nd. one that is really most forward. Thus Jon
 actually has the 'best' passed Pawn. George tells me that the GM now started
 sliding his pieces across the board playing havoc with Rebell's auto-sensory
 system and forcing George to stop the Machine, use Take-back and restart, thus
 depriving the Rebell of up to ½-a-minute on about eight or ten moves. Crafty these
 GMs! - but as an author used by Fidelity/Competence, I guess Jon was very keen to
 get the win! 34 NxN exN 35 Qb5 RxR 36 RxR Bd2 37 Rd1 Bc3 38 Nf4 Qc2 39 Rf1
 Qf5 40 c6! bxc 41 Qxc6 Rc8 42 Qb7 Rd8 43 Qe7 Rb8 44 b7 d3 45 Ne6 Qg6 46 Qc7
 Be5 47 Qc6 Qf7 48 Nc5 Kg7 49 Nd7 Rd8 50 NxB fxN 51 Qc8 Qe8 52 Qc7+ Kg8
 53 Rbl! Rb8 54 Rb5! e4 55 Rxd5 h6 56 Rd6 d2 57 Rxd2 e3 58 Re2 exf+ 59 Kf1
 Qd8 60 QxQ RxQ 61 Rc2 and Black resigns 1-0, one of the last three to finish.
 George wished he could have played 59 - Qgl! but it wasn't available at the time.

MATCH - NOVAG FORTE v MEPHISTO DALLAS 68020

NEWS SHEET Reader Gerald Murphy is running a very interesting Match between these two; all Games played at 3mins per move and the Openings left entirely to the Computers to choose their own.

As I write these notes the MEPH DALLAS 68020 leads 11-2=5 (13½-5½) also the FORTE has been far from disgraced. One of its wins was a lengthy affair when it triumphed in a Queen v Rook ending. This one is much more digestible and is shown here after the following Game in which the DALLAS exhibits enormous power.

MEPHISTO also won LAST game. 14½-6½.

White NOVAG FORTE, Black MEPH DALLAS 68020. French Defence.

1 e4 e6 2 d4 d5 3 Nc3 Nf6 4 e5 Nd7 5 f4 c5 6 Nf3 Nc6 7 Be3 Qb6 8 Bb5!? -

The FORTE has left its Book to play this move. 8 Na4 Qa5+ is the continuation in the DALLAS Book so the move played puts him out of Book as well.

8 - a6 9 dxc5?!

I was surprised at this choice of move... and more so after finding that the FORTE on Display in our Office chose 9 Bxc6 which looks better to me. After the move played wholesale exchanges will soon leave the White King looking precariously exposed.

9 - Bxc5 10 Bxc5 Nxc5 11 Bxc6+ bxc6 12 b3 -

Another surprise! There is the obvious looking 12 Rb1 available, but the Office FORTE here chooses 12 Qc1 expecting the reply Bb7. Of course without replaying the Game using the exact timings that occurred in the original there is no way of knowing how long the FORTE had to think about this move in his Opponent's time which will account for the variation.

12 - 0-0 13 Qd2? -

I think 13 Qd4 would have been better here. Both the FIDELITY AVANT GARDE and the MEPHISTO REBELL choose this, as does the FORTE when going through a full 6 Ply Search. Presumably in the Game it 'cut-off' at the end of its 5th. Ply. If 13 Qd4 then either - Nd7 or (better) 13 - a5 14 0-0 Ba6 when Black has an advantage that does not appear too great.

13 - a5 14 Qe3 Ba6 15 Qd2 Rab8

Is White already lost? The DALLAS 68020 would here go 16 Qd4 a4 17 0-0-0 and the REBELL 16 0-0-0 a4 17 Qd4 each transposing to the same position from which 17 - axb3 18 axb3 Nxb3+! 19 cxb3 Qxb3 20 Re1 Qa3+ 21 Kd1 Rb2 22 Nd2 Qa1+ 23 Nb1 Be2+ 24 Kc1 Rfc8 25 Rxe2 Rxb1+ and wins easily. The move FORTE plays is certainly better than this. Other possibilities are (using the replies that DALLAS would have made), 16 Rd1 Ne4 17 Nxe4 dxe4 18 Nd4 c5 with Rfd8 to follow or, 16 Nd4 Nd7?! 17 Rd1 Rfc8 18 Nde2. In both Black has a definite but perhaps not decisive advantage? Probably enough I would think.

16 a3 Ne4! 17 Nxe4 dxe4 18 Ng5 -

If 18 Nd4 then Rfd8 looks even stronger than in the Game.

18 - Rfd8 19 Qc3 Rd4 20 Rb1? -

This settles FORTE's fate. Given longer he chooses 20 a4? but Rbd8 wins. E.g. 21 b4 Rd2 threatening Re2+, or 21 Qg3 when both Rd2 and Qb4+ win. If, after 21 - Rd2 (threatening Re2+ again) White tries 22 c4, then 22 - R8d3! REBELL found perhaps the best chance... 20 Rd1 Rxd1+ 21 Kxd1 Qf2 22 Nh3! Qxg2 23 Rg1! keeping Black's clear advantage to a minimum for the time being.

20 - Rbd8: 21 Qg3 -

As well as 21 - Rd2, Black was threatening devastating moves such as Rc4! so it is hard to see what else FORTE could do.

21 - Rd2 22 c4 Bxc4 23 Nxb7 Re2+ 24 Kf1 Re3+ 25 bxc4 Qxb1+ 26 Kf2 Rd2+ 27 Kxe3 Qd3 mate 0-1

An impressive and well executed win by the DALLAS 68020 in all departments.

The following Game from the Match might have been a win for the DALLAS again but for a move 'mix-up' (you'll see what I mean). But FORTE reacts to the slip in devastating style.

White NOVAG FORTE, Black MEPHISTO DALLAS 68020. Queens Gambit Declined.

1 d4 d5 2 c4 c6 3 Nf3 Nf6 4 Nc3 dxc4 5 a4 Bf5 6 e3 e6 7 Bxc4 Bb4 8 0-0 0-0
 9 Qe2 - (expects Nd7 which stays in Book) Ne4 10 Bd2 Nxd2 11 Nxd2 Nd7 12 Nf3 Qc7
 13 Rac1 Be7 14 h3 a6 15 Ba2 Rfc8 16 Rfe1 c5 17 d5 c4 18 e4 Bg6 19 Nd1 b5!
 (This advance is the start of troubles for the FORTE as Black both restricts the
 Novag options and threatens to win a piece in a few moves) 20 dxe6 fxe6 21 axb5
 axb5 22 Nc3 Ra5 23 Red1 Nb6 24 b3 - (given more time the FORTE prefers the
 centralising 24 Nd4, but b4 is still as strong as the b2/B looks distinctly wobbly
 after the c3/N moves. I felt 24 Bb1 looked the best way out so that the c3/N can
 go to a2 after Black's b4. However Black's 25 - Qa7 now looks rather unpleasant)
 24 - b4 25 Na4 c3 26 Nxb6 Qxb6 27 Rd7? Bc5 28 Rc2 Bd6! 29 e5 - (White is
 clearly struggling now and FORTE shows himself -1.41 playing this move. 29 Nd2!?
 looks a nice 'gimmick' move but is easily scolded with Rxa2! 30 Rxa2 c2! If White
 had tried 29 Qd3 then Rd5!! or 29 Bb1 Ra1 30 Qe1 Qc6! Finally 29 Ne1 Be8!)
 29 - Bc5?? (if here 29 - Bxc2 30 Qxc2 Rxa2! then Black should be home and dry for
 31 Qxa2 c2! wins easily) 30 Ng5 Bxc2?? (But NOT now - what a mix up. With White's
 Knight on g5 this is a disaster as FORTE quickly proves. If 30 - Rf8 then the
 dangerous g5/N is forced to retreat and 31 Ne4 allows the continuation Bxf2+
 32 Nxf2 and now Bxc2! is okay, eg. 33 Qxc2 Qxf2+ 34 Qxf2 Rxf2 35 Kxf2 Rxa2+
 36 Kf3 Ra3 and wins) 31 Qxc2 - (look now at the attacks on h7 and suddenly the
 trapped White Rook on the 7th. Rank has power as well!) - Bxf2+ (31 - Kf8 is no
 better, 32 Nxb7+ Ke8 33 Nf6+ and whether Kf8 or gxf6 34 Qh7 is mate next) 32 Kh1
 g6 33 Nxb7 Kh8 34 Qxg6 Rg8 35 Qf6+ Rg7 36 Qxg7 mate 1-0

I enjoyed going through both of these DALLAS v FORTE games and my thanks to Gerald Murphy for sending them on with his brief notes to tell me which are the best ones to look at!

ADVERT 1

Your EDITOR needs to raise some cash so rather reluctantly considering selling my AVANT GARDE (Oct 1986) with CB16 Op. BOOK and Fidelity PRINTER with papers and ribbons. £395. (no "offers", please - already v.g. value). P/p incl. in price.

ADVERT 2

George Morris, 58 Littleover Lane, Derby DE3 6JG (tel 0332 767562) selling his MEPHISTO REBELL in EXCLUSIVE Board. Suggests £375 (purchased Nov. 1986) or Board only £195 enabling purchaser to use/buy MM2 or Dallas instead (from Eureka!?) George is buying a friend's Meph Amsterdam in Munich Board so also needs cash!

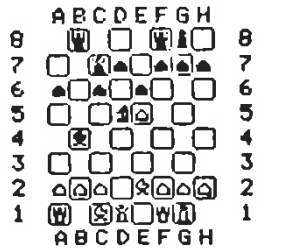
NOVAG FORTE B (1987)

It is easy to be first out with the "evidence" of course when the Machine is one that we handle at Eureka.

Here are 3 Games from my initial Test Match of the NOVAG FORTE Up-grade (some up-gradeable Programmes NEVER get upgraded - here is a 'non-up/g' which you CAN upgrade)

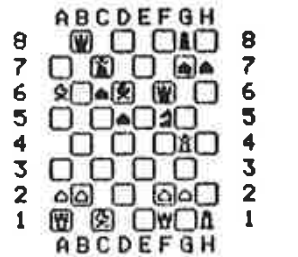
The improvements are due to careful Programme pruning of non-vital Algorithms and minor corrections to one or two others plus some in the Opening Book and you end up with a Machine that plays up to 25% faster in the middle game. From initial Results it seems that David Kittinger's expectation of a 50 Elo strength increase is in no way over optimistic - the 30 sec per move Match v AVANT GARDE ended up 8½-1½ for FORTE B, and the 3 min per move Match was 6-2 also for FORTE B.

The 3 games include a superb AVANT GARDE win plus 2 equally good ones from FORTE.



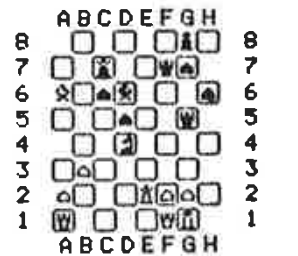
T 13:47 23:15

- 15 C4 ♗E7
- 16 ♗D4 ♗F5
- 17 ♗E4 D5
- 18 ♗F4 F6
- 19 EF6 ♗D6
- 20 ♗G4 ♗H2
- 21 ♗H1 ♗F6
- 22 CD5 ED5
- 23 ♗A6 ♗D6



T 44:46 49:50

- 24 ♗G5 ♗F7
- 25 B3 ♗B4
- 26 ♗E2 ♗E4
- 27 ♗C2 ♗G4
- 28 ♗D2 H6
- 29 ♗G1 ♗G5
- 30 ♗E2 ♗D4



T H01:10H01:22

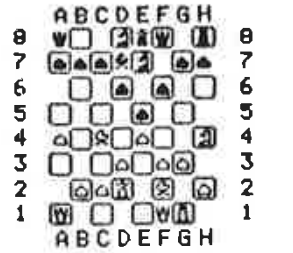
- 31 ♗E8 ♗F8
 - 32 ♗FE1 ♗E8
 - 33 ♗E8 ♗F7
 - 34 ♗A8 ♗F3
 - 35 ♗F1 ♗H5
 - 36 GF3 ♗B4
- Resigns*

FID AVANT GARDE NOV FORTE B
LEVEL A6 (3mins)

- 01 E4 E5
- 02 ♗F3 ♗C6
- 03 ♗C4 ♗C5
- 04 D3 ♗F6
- 05 O-O D6
- 06 ♗C3 O-O
- 07 ♗A4 ♗D7
- 08 ♗C5 ♗C5
- 09 ♗G5 ♗E8
- 10 ♗D2 ♗E6
- 11 ♗E3 ♗H8

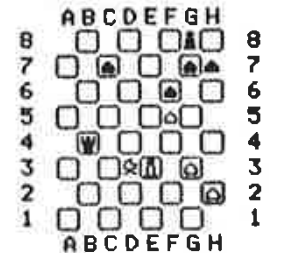
- 12 ♗H4 F6
- 13 F3 ♗ED8
- 14 A4 ♗D7
- 15 ♗F2 ♗E7
- 16 G3 ...

T 42:11 31:34



- 16 ... ♗A4
- 17 B3 ♗C6
- 18 D4 ED4
- 19 ♗D4 A6
- 20 ♗F5 ♗F5
- 21 EF5 ♗D7
- 22 ♗F4 ♗E8
- 23 ♗G2 D5
- 24 ♗D3 ♗F7
- 25 ♗FE1 ♗E7
- 26 C4 ♗AE8
- 27 ♗E7 ♗E7
- 28 CD5 ♗D5
- 29 ♗C5 ♗E5
- 30 B4 ♗G5
- 31 ♗F1 ♗C6
- 32 ♗D4 ♗F3
- 33 ♗F3 ♗F3
- 34 ♗F3 ♗E8
- 35 ♗C2 ♗D5
- 36 ♗G4 ♗C4
- 37 ♗E4 ♗D4
- 38 ♗B7 ♗F4
- 39 ♗F4 ♗B8
- 40 ♗A6 ♗B4
- 41 ♗E3 ♗G8
- 42 ♗D3 ...

T H01:40H01:43



- 42 ... ♗F8
- 43 ♗E4 C5
- 44 ♗D3 ♗E7
- 45 G4 ♗D6
- 46 ♗F3 ♗B3
- 47 ♗E4 C4
- 48 ♗H1 ♗H3
- 49 ♗D4 ♗H2
- 50 ♗E4 H5
- 51 GH5 ♗H4
- 52 ♗E3 C3
- 53 ♗C2 ♗C5
- 54 ♗D3 ♗B4
- 55 ♗E2 ♗A3
- 56 ♗D3 ♗B2
- 57 ♗D1 ♗H5
- 58 ♗H5 C2
- 59 ♗F3 ♗C1
- 60 ♗E4 ♗C7
- 61 ♗E3 ♗G3
- 62 ♗E4 ♗E5

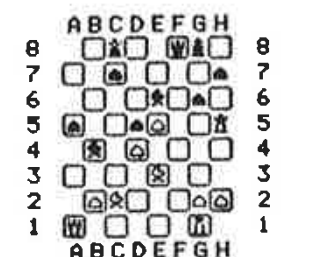
- 63 ♗D3 ♗F5
 - 64 ♗E4 ♗F4
 - 65 ♗D5 G5
 - 66 ♗E4 F5
 - 67 ♗D5 G4
 - 68 ♗G8 ♗E4
 - 69 ♗D2 G3
 - 70 ♗C4 ♗C4
 - 71 ♗E3 ♗E4
 - 72 ♗D2 G2
 - 73 ♗D1 ♗D3
 - 74 ♗E1 ♗G1
- MATE

NOV FORTE B AVANT GARDE
LEVEL A6 (3mins)

T 00:134 00:16

- 01 E4 E5
- 02 ♗F3 ♗C6
- 03 ♗B5 A6
- 04 ♗A4 ♗F6
- 05 O-O ♗E4
- 06 D4 B5
- 07 ♗B3 D5
- 08 DE5 ♗E6
- 09 C3 ♗E7
- 10 ♗BD2 O-O

- 11 ♗D4 ♗D4
- 12 CD4 F5
- 13 ♗E4 ♗E4
- 14 F3 EF3
- 15 ♗F3 ♗D7
- 16 ♗F8 ♗F8
- 17 ♗E3 A5
- 18 A4 BA4
- 19 ♗A4 ♗C8
- 20 ♗C2 ♗B4
- 21 ♗H5 G6



T 39:50 31:13

- 22 ♗B6 ♗B8
- 23 ♗G6 ♗H8
- 24 ♗G5 ♗F5
- 25 ♗F6 ♗F6
- 26 ♗F6 ♗G8
- 27 ♗F1 ♗E4
- 28 ♗F4 ♗D7
- 29 E6 ♗G7
- 30 ♗D8 ♗H7
- 31 ♗H4 ♗G6
- 32 ♗G4 ♗H7
- 33 ♗G7 ♗G7
- 34 ♗C7 ♗F6
- 35 ♗F7 ♗G5
- 36 E7 ♗E7
- 37 ♗E7 ♗G6
- 38 H4 A4
- 39 G4 ♗H6
- 40 ♗F6 ♗H7

- 41 H5 ♗G6
- 42 ♗G6 ♗H8
- 43 H6 A3
- 44 ♗G7 MATE

NOV FORTE B FID AVANT G
L6 (3mins)

- 01 E4 C5
- 02 ♗F3 E6
- 03 D4 CD4
- 04 ♗D4 ♗C6
- 05 ♗C3 ♗C7
- 06 ♗E3 A6
- 07 ♗E2 ♗F6
- 08 O-O ♗B4
- 09 ♗A4 O-O
- 10 ♗C6 BC6

- T 01:14 00:00
- 11 ♗B6 ♗B8
- 12 ♗C8 ♗C8
- 13 E5 ♗D5
- 14 ♗C1 ♗C7

FIDELITY AVANT GARDE v NOVAG EXPERT/6

Here are a couple of decisive Games from a Match I have been running between the above 2 Machines. Both Games were played at 3mins per move and the Match has allowed the Computers to determine their own Openings.

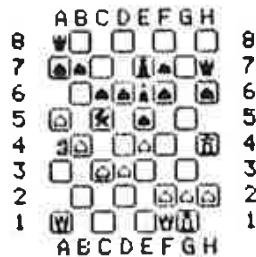
Score at the time of writing is 8-7=7 (11½-10½) in favour of the EXPERT/6.

FID AVANT G white
NOV EXPERT black

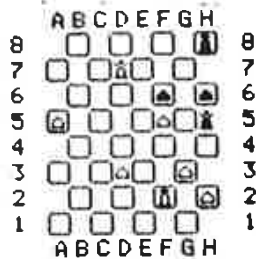
- 01 E4 E5
- 02 ♘F3 ♘C6
- 03 ♗C4 ♗C5
- 04 D3 ♘F6
- 05 O-O D6
- 06 ♘C3 ♘D4
- 07 ♘D4 ♗D4
- 08 ♘G5 H6
- 09 ♗F6 GF6
- 10 ♘H5 ...

T 17:20 08:52

- 10 ... ♗H7
- 11 ♗B3 ♗D7
- 12 ♗A4 ♗C6
- 13 ♗A5 ♗C8
- 14 ♘H4 ♗E7
- 15 ♘H4 ♗E6
- 16 ♘E6 ♗E6
- 17 C3 ♗C5
- 18 B4 ...



- 18 ... ♗B4
- 19 ♗B3 ♗B3
- 20 ♘H3 ♗B8
- 21 ♗FB1 ♗E6
- 22 ♗E3 ♗G4
- 23 G3 ♗A6
- 24 F3 ♗H3
- 25 ♗A7 ♗D7
- 26 ♗BC1 ♗F8
- 27 ♗B6 ♗E7
- 28 ♗G2 F5
- 29 EF5 F6
- 30 ♗C8 ♗D8
- 31 ♗D6 ♗D6
- 32 ♗A8 ♗G7
- 33 ♗B7 ♗H8
- 34 ♗A6 ♗B4
- 35 ♗C6 ♗D2
- 36 ♗H1 ♗F8
- 37 ♗D6 ♗HF7
- 38 ♗CG1 ♗C8
- 39 ♗G2 ♗G5
- 40 ♗E6 ♗FC7
- 41 ♗F2 ♗7C6
- 42 F4 ♗H5
- 43 ♗D7 EF4
- 44 ♗F4 ♗6C1
- 45 ♗C1 ♗C1
- 46 ♗G2 ♗C2
- 47 ♗F2 ♗F2
- 48 ♗F2 ...



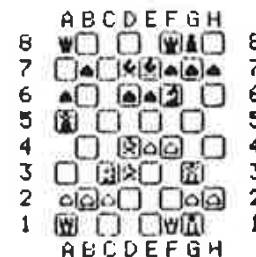
T H02:07H01:56

- 48 ... ♗H2
- 49 ♗F3 ♗H1
- 50 ♗E2 ♗G2
- 51 ♗D1 ♗F3
- 52 ♗D2 ♗F2
- 53 ♗C3 ♗E1
- 54 ♗C4 ♗C1
- 55 ♗D5 ♗E3
- 56 ♗D6 ♗G7
- 57 ♗C6 ♗F3
- 58 ♗C7 ♗E3
- 59 ♗D8 ♗G5
- 60 ♗E7 ♗G8
- 61 ♗E8 ♗G7
- 62 ♗G6 ♗G6
- 63 FG6 ...

1-0

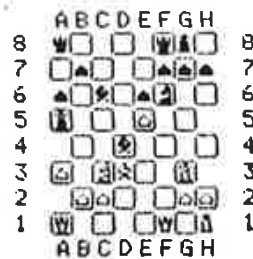
NOV EXPERT/6 white
FID AVANT G black

- 01 E4 C5
- 02 ♘F3 D6
- 03 D4 CD4
- 04 ♘D4 ♘F6
- 05 ♗C3 E6
- 06 ♗E2 A6
- 07 O-O ♗C7
- 08 F4 ♗C6
- 09 ♗E3 ♗E7
- 10 ♗E1 O-O
- 11 ♗G3 ♗D7
- 12 ♗D3 ♗D4
- 13 ♗D4 ♗A5



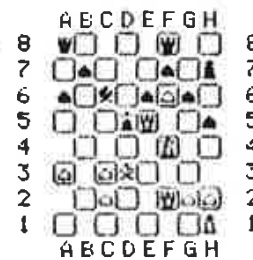
T 01:37 17:32

- 14 A3 ♗C6
- 15 E5 DE5
- 16 FE5 ♗C5
- 17 ♗H1 ♗D4



T 30:36 29:25

- 18 EF6 G6
- 19 ♗H4 ♗C3
- 20 BC3 ♗D5
- 21 ♗F2 H5
- 22 ♗F4 ♗H7
- 23 WE1 ♗D7
- 24 WE5 ♗D5



T 54:22H01:06

- 25 ♗D5 ♗D5
- 26 ♗G5 ♗FH8
- 27 ♗H5 ♗G8
- 28 ♗G4 ♗H7
- 29 C4 ♗C6
- 30 ♗G6 FG6
- 31 ♗G6 ♗H8
- 32 F7 ♗F7
- 33 ♗F7 ♗G2
- 34 ♗G1 ♗C6
- 35 ♗H7

MATE 1-0

T H01:09H01:22

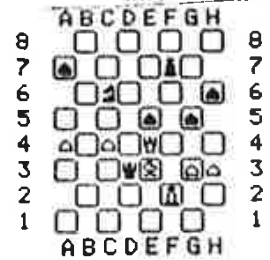
Alternative end:-

- 33 ♗F6 ♗F8
- 34 ♗H6 ♗H7
- 35 ♗F8

MATE

And an interesting Draw.

FAV white EXPERT-b1



T H01:49H01:40

- 40 ... ♗A3
- 41 H4 ♗A4
- 42 HG5 HG5
- 43 ♗G5 ♗E6
- 44 G4 ♗A5
- 45 ♗D8 ♗C4
- 46 G5 ♗F5
- 47 ♗H4 E4
- 48 ♗H6 E3
- 49 ♗F1 A5
- 50 G6 ♗A1
- 51 ♗E2 ♗G1
- 52 ♗D3 ♗E5
- 53 ♗E2 A4
- 54 ♗H5 ♗E6
- 55 ♗G5 ♗G6
- 56 ♗E3 A3
- 57 ♗A5 ♗F4
- 58 ♗F2 ♗H3
- 59 ♗F3 ♗G5
- 60 ♗E2 ...

T H02:51H02:30

- 60 ... ♗G2
- 61 ♗F1 ♗C2
- 62 ♗G5 A2
- 63 ♗E3 ♗D7
- 64 ♗E1 ♗C6
- 65 ♗D4 ♗H2
- 66 ♗D1 ♗D7
- 67 ♗A6 ♗G2
- 68 ♗C1 ♗C7
- 69 ♗B2 ♗A1
- 70 ♗A1 ...

now on 1min per move

- 70 ... ♗B7
- 71 ♗A4 ♗C6
- 72 ♗C3 ♗D5
- 73 ♗D1 ♗E6
- 74 ♗E4 ♗F5
- 75 ♗E7 ♗F4
- 76 ♗D4 ♗F3
- 77 ♗E1 ♗C2
- 78 ♗E6 ♗C4
- 79 ♗D6 ♗C2
- 80 ♗D1 ♗H2
- 81 ♗E6 ♗A2
- 82 ♗E1 ♗A4
- 83 ♗D6 ♗A2
- 84 ♗D5 ♗E4

½-½

WEST WINDS TOURNAMENT

As mentioned elsewhere I was recently preparing an article for KINGPIN to do a combined review of the PAR E, FORTE and REBELL. As I was considering which games to include to best "show off" each of the Machines I suddenly realised that each of them had obtained a win against the Mephisto Amsterdam. In fact the Amsterdam lost 4 of its 8 games in that Tournament (Novag Expert/5 was the fourth) though it had and still has plus-scores against all of them in individual Matches. (An exception might be against Novag Expert/6MHz where Larry Kaufman has recorded a 9-7 score for the Novag. Otherwise the MA is well ahead in all Matches and of course has since been upgraded to the DALLAS modules which are also discussed elsewhere).

Whatever, for KINGPIN, I decided to use the 3 wins from that Tournament and decided to repeat them here as it is most unlikely that a West Winds Booklet will be issued now... (1) it's become "old" news (2) I'm struggling to keep up with "new" news and get NEWS SHEET out (3) finances... see page 15 and bear in mind that a West Winds Booklet would cost me over £200. So here are those 3 games for NS folk who also get the bonus of the Novag Expert game with some light notes. Competence has full Jon Speelman notes on 3 PAR E wins; Eureka has 3 EXPERT and 3 REBELL wins each with light notes by Julian Simpole.

Fidelity PAR EXCELLENCE v Mephisto AMSTERDAM

1 d4 d5 2 Nf3 Nc6 3 Bf4 Bf5 4 e3 e6 5 Bd3 Bb4+ 6 Nc3 Nge7 7 0-0 0-0 8 Qd2 Bxd3 9 Qxd3 Ng6 10 Bg3 a6 11 h4 Nge7 12 a3 Bxc3 13 Qxc3 Nf5 14 Bf4 Nxh4 15 Nxh4 Qxh4 16 Bxc7 Rac8 17 Bg3 Qg4 18 Qb3 Nd8 19 Bd6 Re8 20 c3 Rc6 21 Bc5 Rc7 22 a4 Nc6 23 c4 dxc 24 Qc3 Rd7 25 Rac1 e5 26 Rfd1 exd 27 exd Re2 28 Qxc4 Rxb2 29 Ba3 Re2 30 d5 Qxc4 31 Rxc4 f5 32 Rcc1 Ne5 33 Bc5 Ra2 34 Rd4 Kf7 35 Re1 Ng4 36 f3 Nf6 37 Re5 g6 38 g4 fxg 39 fxg Rc2 40 d6 h6 41 a5 g5 42 Bb4 Rc8 43 Kg2 Re8 44 Rf5 Kg6 45 Rc5 Rf7 46 Rc7 Rxc7 47 dxc Re2+ 48 Kf3 Rc2 49 Bd6 Rc3+ 50 Ke2 Ne8 51 Bh2 Rc6 52 Rd7 h5 53 gxh+ Kxh5 54 Rh7+ Kg6 55 Re7 Nf6 56 Kd3 Kf5 57 Re5+ Kg6 58 Re2 g4 59 Rc2 Rxc7 60 Rxc7 Nh5 61 Bd6 g3 62 Ke2 Kf5 63 Kf3 g2 64 Kxg2 Ke6 65 Ba3 Nf4+ 66 Kh2 Nd3 67 Rxb7 Kd5 68 Rb6 Ne5 69 Rxa6 Nc4 70 Be7 Ke4 and resigns 1-0.

Mephisto AMSTERDAM v Novag FORTE

1 d4 Nf6 2 Nf3 b6 3 c4 e6 4 Bf4 Bb7 5 e3 Be7 6 h3 c5 7 Nc3 cxd 8 exd 0-0 9 Bd3 d5 10 cxd Nxd5 11 Nxd5 Bxd5 12 0-0 Nc6 13 Ne5 Nxd4 14 Bxh7+ Kxh7 15 Qxd4 Bf6 16 b3 Rac8 17 Rac1 Qe7 18 Qd2 Qb7 19 f3 g6 20 Rfel Rfd8 21 Rxc8 Rxc8 22 Rc1 Kg8 23 Rc2 Rxc2 24 Qxc2 g5 25 Bg3 Bg7 26 Qd2 Qa6 27 Qxg5 f6 28 Qg6 fxe5 29 Bxe5 Qb7 30 Kf2 Qf7 31 Qg5 Bc6 32 Qg4 Bd7 33 h4 Qe7 34 Kg3 Be8 35 Kh3 Kh7 36 Bxg7 Qxg7 37 Qe4+ Qg6 38 Qa8 Qf7 39 g4 Kg7 40 Qe4 Qf6 41 h5 e5 42 Kg3 Kh6 43 Qd5 Qc6 44 Qd2+ Kh7 45 Qe3 Qd6 46 Qc1 e4 47 f4 Bd7 48 Kh4 Qe6 49 f5 Qe7 50 Kg3 e3 51 Qc2 e2 52 f6 Kh8 53 fxe7 e1=Q+ 54 Kf4 Qxe7 55 Qc3+ Kh7 56 Qc2+ Kg7 57 Qg6+ Kf8 58 Qh6+ Kg8 59 Qg6+ Qg7 60 Qxg7+ Kxg7 61 g5 Kh7 62 a3 Be8 63 Kg4 Bd7+ 64 Kf4 Be6 65 b4 b5 66 Kf3 Bb3 67 Ke2 Bd5 68 Ke3 Bc4 69 Kf2 Bd3 70 Ke3 Bf5 71 Kf3 Bc2 72 Ke2 Kb3 73 Kd2 Be6 74 Kd3 Bg4 75 h6 Bf5+ 76 Ke3 Kg6 77 Kf4 Bc2 78 Kg4 a6 79 Kf4 Kh5 80 Ke5 Kxg5 81 Kd6 Kxh6 82 Kc7 Kg5 83 Kb6 Kf4 84 Kxa6 Ba4 85 Kb6 Ke3 86 Kc5 Kd2 87 Kc6 Kc3 88 Kb6 Kb2 89 Kc6 Kxa3 90 Kc5 Kb3 91 Kc6 Kxb4 92 Kb6 Ka3 93 Kc5 and resigns 0-1.

Mephisto AMSTERDAM v Mephisto REBELL

1 d4 Nf6 2 c4 e6 3 Nf3 b6 4 Bf4 d5 5 e3 Bb4+ 6 Nd2 0-0 7 Bd3 Bb7 8 0-0 Nd7 9 cxd5 exd5 10 Qc2 c5 11 Bd6 Re8 12 a3 Bxd2 13 Nxd2 Rc8 14 Qc3 cxd4 15 Qxd4 Nc5 16 Bxc5 bxc5 17 Qa4 Qb6 18 b4 c4 19 Bf5 Rcd8 20 Nf3 g6 21 Bh3 Ne4 22 Nd4 f5 23 Rac1 Ng5 24 Qc2 Nxh3 25 gxh3 Qf6 26 Qd1 Qg5+ 27 Kh1 f4 28 Rg1 Qh6 29 Qf3 fxe3 30 Rc2 exf2 31 Rxf2 Rf8 32 Nf5 Qg7 33 Nxc7 Rxf3 34 Rxf3 d4 35 Kg2 Rf8 36 Rf1 Kxg7 37 Kg3 Bxf3 38 Re1 Rf7 39 Rf1 d3 40 Rg1 c3 41 Kf2 d2 42 Ke3 Re7+ 43 Kd3 and resigns 0-1.

Game four. Sicilian Defence.

A level contest
which is decided by
a late blunder.

White: Black:
Expert. Amsterdam.

- 1 e5 c5
- 2 Nf3 Nc6
- 3 d4 cxd4
- 4 Nxd4 g6
- 5 c4 Bg7
- 6 Be3 Nf6
- 7 Nc3 Ng4
- 8 Qxg4 Nxd4
- 9 Qd1 Ne6
- 10 Rc1 b6
- 11 Bd3 Bb7
- 12 Bb1 Qc7
- 13 Nd5 Qe5
- 14 b4 Qb2
- 15 O-O h6
- 16 f4 Bxd5
- 17 cxd5 Nd8
- 18 Qe1 e6
- 19 Rc7 Bd4
- 20 Bxd4 Qxd4+
- 21 Kh1 a5
- 22 b5 O-O
- 23 Qe2 ...
- If 23 Rxd7, Qc4
is a good reply.
- 23 ... exd5
- 24 Rxd7 Re8
- 25 Bd3 Rc8
- 26 Qd1 Qb2
- 27 exd5 Qxa2
- 28 f5 g5
- 29 f6 Qa3
- 30 Qf3 Rc1
- 31 h3 Qc5
- 32 Rxc1 Qxc1+
- 33 Kh2 Qe1
- 34 Bf1 a4
- 35 Bc4 Qe5+

White's early impetus
has been largely negated.

- 36 Kh1 Qe1+
- 37 Bf1 a3
- 38 Ra7 Qb1
- 39 Rxa3 Re1
- 40 Kgl Qxb5
- 41 Ra8 Qd7
- 42 Kf2 Re5
- 43 Bc4 Qc7
- 44 Kgl Re1+
- 45 Kf2 Re5
- 46 g3 Qxc4
- 47 Rxd8+ Kh7
- 48 Qd1 Kg6
- 49 d6 Rf5+
- 50 Kgl Qc3
- 51 Rg8+ Kh7
- 51...Kxf6; 52 d7,
Qxg3+ draws, as does
52...Qe3+ 53 Kh1,
Qe4+ 54 Kgl etc.
- 52 Rg7+ Kh8
- 53 Rxf7 Qxg3+
- 54 Kh1 Kg8

With the perpetual
assured, Black dabbles.
Or is it trying to win?

- 55 Rg7+ Kf8
- 56 d7 Qxh3+
- 57 Kgl Qg3+
- 58 Kh1 Qh4+
- 59 Kgl Qf2+
- 60 Kh1 Qf1+??

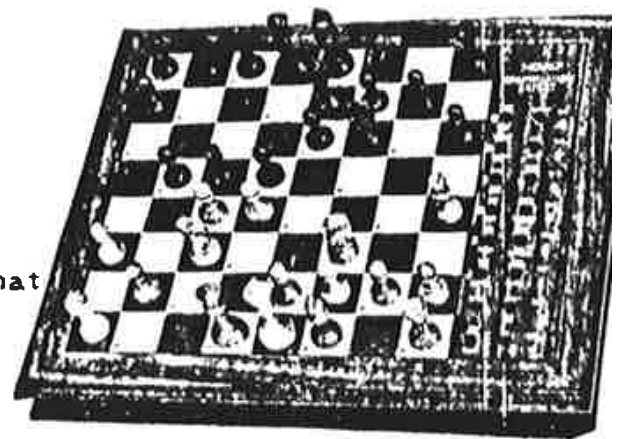
A miscalculation that
loses.

- 61 Qxf1 Rxf1+
- 62 Kg2 Rd1

- 63 Re7l Rd6
- 64 Re8+ Kf7
- 65 d8=Q Rxd8
- 66 Rxd8 Kxf6
- 67 Rd6+ Kg7
- 68 Kg3 h5
- 69 Rxb6 Kh7
- 70 Kf3 Kg7
- 71 Ke4 g4
- 72 Kf4 Kh7
- 73 Kg5 g3
- Ever hopeful!
- 74 Kxh5 Kg7
- 75 Rg6+ Kf8

And White went on
to win. Black might
have tried for the
stalemate swindle with
75...Kh8; 76 Kh6? g2;
77 Rxc2?? draw.
As for move 60, how
many of us have done
the same!

With thanks to Julian Simpole,
an ex-Sussex County Champion
friend of ours, for the notes
to this game.



NOVAG EX/ART

FINANCES

I really dislike having to discuss the dreaded MONEY - it's never an easy or pleasant subject and I am especially aware that it is my own choice to keep NEWS SHEET on a "voluntary contribution" basis and without applying pressure, certainly to British readers.

However necessity forces the subject to rear its head since existing British readers gifts since the last Issue have only amounted to £10 plus a few stamps! As it was posted out to over 200 Readers in this Country it doesn't need an accountant to tell you that my "hobby loss" was rather substantial. A 3-figure loss has only just been avoided due to the fact that 25 new Readers since the April Issue have nearly all contributed to "start them off" and 2 new Readers from abroad have, combined, contributed an amount exceeding all new and existing British moneys. Without this my loss would have been over the £100. Apart from 1 Issue (when I actually made £6 profit!) each of the previous 12 Issues had made a small to moderate loss, but I certainly cannot afford to keep it going on the present basis unless I do some serious "pruning" of the folk who, presumably, aren't bothered about getting it.

In addition I surprisingly find myself with less spare cash now than I had when we lived in mid-Wales so I am under some pressure as I nervously prepare to print and send out 275 copies this time!

Please don't misunderstand if you are one of the 10% who contribute above the NEWS SHEETS realistic value (about 50p per Issue plus p/p - more this time due to 16 (!) pages). Some of you know the "difficulties" and try to help out, and some have tried to give me a "bit extra" as befits a Magazine Editor spending hours at his task. I appreciate your thoughtfulness. Another 33% pay a figure approximating to an estimated realistic value for NEWS SHEET which is perfectly fair and enough to keep everything going. 5% get it FREE... by arrangement! I.e. they are Manufacturers or co-Workers in that they provide me with genuinely helpful info. or else we swap Magazines so that we get each others free of cost.

My immediate concern is with the other 50% half of whom have paid nothing since an initial request which may (or may not) have included an s.a.e! I think it must be FAIR to conclude that these, having seen the NEWS SHEET, have decided that it isn't worth paying for and will not really miss it if they don't get it anymore. I SHALL ASSUME THIS IS SO AND NOT SEND NS/15 UNLESS I HEAR FROM YOU.

If this comment/warning/BEGGING results in sufficient response to cover costs + a bit more of this Issue (so re-covering even a little some of the losses of NS/13) then I should be able to cheerfully continue with the revised Mailing List. Otherwise I'll have to have a look at the 'very nominal' payers but I don't believe it will come to that as quite a few have written and just said "let me know when you want some more money!" So, I'm letting you know and hope things will work out fine.

Oh. and one thing money doesn't affect is....

you guessed it... John 15:11!

If you've read to the bottom of this plea - thanks - trust I haven't upset any supporters which is not intended.

THE NOVAG FORTE UPGRADER!

You've all heard about the up-gradeable Machine that never gets up-graded!

For the FIRST TIME EVER we have a 'not up-gradeable' Computer which you CAN!! The NOVAG FORTE!!

There are small changes to the Opening Book but the major difference is in the SELECT and SEARCH ALGORITHM STRATEGY which results in an improved EVALUATION TECHNIQUE now running up to 50% faster in most Middle Game situations, and sometimes even faster!

Our testing of the FORTE B has produced an 8 1/2 - 1 1/2 win over the Fidelity AVANT GARDE at 30 secs per move, and 6 1/2 - 3 1/2 at 3 mins per move. We estimate that the NOVAG FORTE B is 75-100 Elo stronger than the standard FORTE at Speed, and 50-75 stronger at Tournament Levels!

The FORTE B up-grade for your NOVAG FORTE £49.95 (this includes p/p; simply return your Machine to us and we will have it on its way back to you within 72 hours of receipt).

The new NOVAG FORTE B £249.95 (please add £9.95 for Adaptor, p/p free).

The original NOVAG FORTE still available at £249.95 (strong enough for most players already).

Eureka Electronics Ltd

26 Castle Street, Brighton, East Sussex, BN1 2HD.
Telephone Brighton (0273) 202016

NEWS SHEET RATING LIST by Eric Hallsworth, Summer 1987

	Elo	BCF
MEPHISTO DALLAS 68020	2246	205
MEPHISTO DALLAS 68000	2189	199
MEPHISTO AMSTERDAM	2135	192
NOVAG FORTE B	2081	185
NOVAG EXPERT/6	2033	179
FIDELITY AVANT GARDE	2021	178
NOVAG FORTE*	2020	178
FIDELITY PAR EXCELLENCE & ELITE 2100	2020	178
MEPHISTO REBELL	2019	178
CONCHESS PLYMATE/8MHz	2019	178
NOVAG EXPERT/5MHz	2010	176
CONCHESS PLYMATE/6MHz	1996	174
KASPAROV LEONARDO MAESTRO/6MHz	1996	174
FIDELITY EXCELLENCE/4MHz	1978	172
NOVAG EXPERT/4MHz	1976	172
SCISYS TURBO KASPAROV	1968	171
CONCHESS/6MHz	1963	170
MEPHISTO MM2	1954	169
MEPHISTO SUPER MONDIAL	1951	169
CONCHESS PLYMATE/4MHz	1950	169
PSION/8	1948	168
KASPAROV LEONARDO MAESTRO/4MHz	1948	168
FIDELITY ELITE C	1936	167
FIDELITY EXCELLENCE/3MHz	1936	167
SCISYS TURBOSTAR 432	1936	167
FIDELITY ELEGANCE	1927	166
NOVAG SUPER CONSTELLATION/4MHz	1920	165
MEPHISTO BLITZ	1910	164
CONCHESS/4MHz	1906	163
CHESSMASTER 2000-pc	1902	163
NOVAG PRIMO	1880	160
NOVAG QUATTRO	1863	158
FIDELITY PRESTIGE	1848	156
SCISYS SUPERSTAR 36K	1846	156
CONCHESS/2MHz	1836	155
FIDELITY ELITE A	1834	154
MEPHISTO 3 EXCLUSIVE	1834	154
FIDELITY ELITE B	1831	154
NOVAG CONSTELLATION/3.6MHz	1827	153
PSION QL-pc	1826	153
FIDELITY SENSORY 12	1811	151
SARGON 4 AVE	1805	151
MEPHISTO MONDIAL	1786	148
SARGON 3	1780	148
WHITE KNIGHT 12-pc	1770	146
SUPER ENTERPRISE, SUPER CROWN and ADVANCED STAR CHESS	1760	145
COLOSSUS 4-pc	1755	144
FIDELITY ELITE original	1753	144
KASPAROV LEONARDO basic	1748	144
NOVAG CONSTELLATION/2MHz	1748	143
AMSTRAD 3D CLOCK-pc	1745	143
COLOSSUS 2-pc	1730	141
CHESS 3000	1720	140
FIDELITY SENSORY 9	1712	139
MEPHISTO 2	1676	134
KASPAROV TURBO 24K	1665	133
CHESS 2001	1663	133
CYRUS 2.5-pc	1659	132
MEPHISTO 3	1655	132
SUPERCHESS 3.5-pc	1653	132
SCISYS SUPERSTAR	1649	131

Other popular Machines with their figures are:-
 KASPAROV TURBO 16K 1645 (131)
 CONCHESS A0 1643 (130)
 GGM + STEINITZ 1632 (129)
 KASPAROV EXPRESS 16K 1625 (128)
 SCISYS MARK VI 1617 (127)
 CYRUS I.S-pc 1615 (127)
 SUPERCHESS 3-pc 1614 (127)
 WHITE KNIGHT 11 1609 (126)

*The NOVAG FORTE rating may well need a review/uplift depending on response from Sweden concerning whether '2nd. best modes' are also being used on other Machines. All Machines affected will be corrected in NS/15, but the FORTE figures have been left unaltered for the present issue.

Computers shown thus:-

"Colossus 4-pc" indicate that the programme is software on disk or tape for certain Personal Computer systems. Some of their Ratings are based on more nominal info. and may be rather approximate. Most dedicated Computer Ratings are based on over 100 games per Machine and can therefore be considered accurate to +/-25 Elo.

Prospective purchasers should take care in assessing a Machine's strength if relying on an advertised figure. Many adverts use ratings originating in the U.S and whilst there may well be nothing at all wrong with them, folk should be aware that the USCF scale is about 75 higher than the ELO scale (which my List aims to relate to). Using USA figures is a popular habit, of course, as it enables higher Ratings to be indicated than those which might obtain in Britain.

That's it till next time (maybe early August - probably as soon as I have some "new generation" testings available!).