

Eric Hallsworth
12 Turnpike Close
PEACEHAVEN
E Sussex BN9 8BU

CHESS COMPUTERS, NEWS SHEET 15. Early Autumn 1987

As all NEWS SHEET readers know, I'm always glad to be getting into print again.. especially (or perhaps not?) this time as part of the work is being done on a WORDPROCESSOR. This SHOULD have various advantages once I get used to it! (1) Less typing errors! (2) Work can be prepared more easily in advance because later alterations/corrections can be made prior to final printout without wasting all of the earlier work. (3) The Rating List can be printed out directly from the Computer Programme and readers will get figures which are as up-to-the-minute as possible.

First Things First!

Sincere thanks to all who responded to my plea in the last issue for help with the finances. Costs for NS/14 were nicely covered with some left over to get the present one started.

IN THIS ISSUE

- * Plenty of RESULTS from Sweden, USA, Britain etc
- * NEWS of new Machines from FIDELITY, NOVAG, SCISYS KASPAROV (?)
- * REPORT on the US OPEN (Fidelity and Novag both entered new Machines)
- * York University CHESS COMPUTER TOURNAMENT by S.J.Singh
- * Selection of GAMES
- * RATING LIST up-to-date

The U.S OPEN, August 1987

Coverage virtually has to start here as the NEWS and COMMENT section will make more sense (I hope!) if readers have first learned of events at the US Open. Comments in this Section are taken directly from a Report sent to us by Larry Kaufman. Larry was at the US Open with Novag programmer David Kittinger and 4 different Novag machines which were entered against a large contingent of human opposition. The Novag computers were entered in the Tournament proper and competed for the full 12 rounds which were run on the Swiss system. Fidelity also had 8 Machines entered (all the same), but not in the actual Tournament in that they arrived for round 7 with the intention of playing in the final 6 rounds to total 48 games. This would enable an Official CRA Rating to be given which Fidelity hoped would give their Excel 68000 Club a Master Title (requires 2250 uscf, a figure not achieved by any commercially available Chess Computer so far).

The 'scene' set, we turn now to Larry's report:-

Novag finished strongly and made good scores, though the opposition included some weak players and the performance ratings are not spectacular, though better than Fidelity. Novag X (5MHz SUPER EXPERT prototype) scored 8/12 to tie for 3rd. Expert (!), only 2 pts behind GM Lev Alburt's winning 10/12 score, though its performance figure was 2080. Second Computer was FORTE B at 5.5MHz with 7/12 for 2037. Turbo X (18MHz EXPERT) scored 6.5/12 for 2064, while Turbo 20 (same experimental prog. at 20MHz) scored 6/12 for only about 1840.

BBC OWNERS: CHESS EXPERT

A DISK-BASED storage, retrieval and analysis system with optional 350K OPENINGS DATABASE.

Send £1 for demonstration disk to:- BRAEBURN SOFTWARE, Hawthorn Bank,
Scott's Place, SELKIRK TD7 4DP

"By way of explaining this last poor result, here are some factors:- (1) Two bugs were found in the bit slice programmes which cost 1 game outright and caused significant slowdowns in all, (2) The 64K limit in the bit slice forced us to use a very short version of my Opening Book, and (3) The 20MHz had a damaged cable - consequence unknown..... It seems that Novag's endgame allows players to pull off occasional upsets, but against strong opponents Novag's superiority over Fidelity was very marked.

"Whilst Novag is happy, Fidelity is not. After playing 3 rounds and 24 games they withdrew with a score of only 8.5/24 against a field averaging 2057 for a Performance Rating of 1940! Although they beat opponents in the 1900's with 5.5/7, against players from 2000 to 2150 they scored only 3/15. The programme was a 68000, apparently with much more RAM than the commercial 'Excel 68000', as the verification tests showed it to be around 50% faster on mid-game problems, but more than twice as fast on end-game problems. It apparently had a bug that cost 1 game (it failed to recapture a Rook) but otherwise the programmers felt that it performed as expected. The programme did play end-games rather well..... but it frequently lost in middle-game fighting.

"I ran a 10 game public Match between NOV FORTE and FID EXCEL CLUB which the FORTE won 6.5-3.5. I also did some timings on problems and fixed depth searches on the 68000..... except in the end-game it is only very slightly faster than the PAR E, and sometimes slower. Apparently a 12MHz 68000 is NOT the equivalent of 6MHz on a 6502 - perhaps more like 5.25MHz or so. But the end-game was usually around twice as fast.

"Although it's too early to be sure, I sense that the EXCEL 68000 will end up about 30 points above PAR on the comp -v- comp lists. One thing is now clear; the success of MEPH AMST and DALLAS 68000 is not due to the processor but to the programmer, i.e. Richard Lang.

"Concerning the Performance Ratings achieved..... (1) Players could choose whether to play a Computer or not. 40% were willing to meet a Chess Computer and these all proved to be players owning at least one of their own. Thus they were experienced Computer users and had Openings prepared and were obviously experienced in correct styles of play, (2) Ratings in the north-west USA are stricter than the rest of the US..... by perhaps 100 points because until recently this region had its own Rating System and they largely missed out on the 1980-81 inflation, (3) The 50 in 2.5 hours is okay for humans, but the Machines were mostly kept on 40 in 2. So I think Novag at least did pretty well.

"The Novag bit slices played in the US Open Speed Champ (sponsored by Fidelity!). In the prelims, the 18MHz qualified for the Grand Final with 8/9, and scored 6/12. The 20MHz missed the Grand Final by .5 with 6.5/9 but won the 'A' Final with 8/9..... Despite playing on 60 in 2.5 mins three games were lost on time! However their combined Speed Rating from the 36 games was still 2350.

Eric's SUMMARY and COMMENT

Fidelity

The US Open result and the 3.5-6.5 loss to FORTE (A) indicate a Rating for the EXCEL CLUB of only around 1925. Graham White phoned to tell me that Terry Knight (Competence) has lent him a CLUB and it is losing 7-3 against Graham's DALLAS 68000 - this would suggest a Rating of 2000. In Larry's report he suggests a figure of PAR E +30 which would be around 2030 (the LEVEL of the Rating List is DOWN by 15-20 Elo this Issue due to correction

following large number of results -v- humans being generally a little lower than would be expected at previous Rating Level). Although my Rating List has always been based exclusively on Results, I cannot believe that the Spracklens have just wasted 12 months and produced a Chess Computer 75 Elo worse than their previous effort! I therefore conclude Larry Kaufman's suggestion is the more likely and have given the EXCEL CLUB the 'benefit of the doubt' by attempting a balancing of expectation (2035) with actual performances (1960 after excluding the Speed result -v- Forte) to incorporate the 68000 CLUB onto the Rating List this Issue.

It will be very interesting to see which way future results take this Machine, especially as the Report suggests that the CLUB used in the US Open was working faster than the commercial version will. My employers at Eureka will probably feel I have been too generous to the Fidelity machine.

Novag

Difficulties here are much easier to sort out. There is a temptation to point out that SUPER EXPERT outscored the bit slice EXPERTS (which have a well-established 2200 uscf rating) and also came 140 Elo above Fidelity's Club. The combination of these results would indicate a SUPER EXPERT rating around 2150-2175 with FORTE B about 2100.

However programmer David Kittinger advised an expectancy of Forte B being 50 above Forte (A) and Super Expert/Forte a further 50 above the B. These figures fit in very well with the actual Performance Ratings obtained in the US Open (I am NOT deducting the usual 75 off US figures in view of Larry's '-100' report). Perhaps I should 'balance' the result and expectancy figures for Novag also (i.e. SUPER EXPERT 2100 exp. and 2080 perf. = 2090), but I will hazard a personal guess that my current Rating List suggestions will not prove too far amiss in the long run.

The commercial SUPER EXPERT/FORTE will be out any time - David K and Larry K (who is an IM) spotted a couple of final improvements that can be made for the commercially released version with a minimum of delay - and then we'll have it!

Psion Atari a worthwhile PC

Of course you have to buy an Atari ST Computer first! But the latest Psion prog. for it is the Amsterdam programme which will run at 8MHz when on the Atari making it a useful serious competitor. Results from Sweden elsewhere in NS confirm this.

SciSys/Kasparov

I am still having to report on the LEONARDO developments in trust of what I am told as I have still not had a replacement for the very weak 4MHz version I had last year which appeared to be faulty. A 6MHz MAESTRO in Sweden is doing reasonably well, but the Swedish Open entrant was marked MAESTRO/6B and a copy of this version has reached Paul Hales who is impressed with it. However game-scores promised to me for the NS still haven't turned up and I'm beginning to feel I'll believe it only when I see it. As far as I can tell you it still isn't commercially available in this country anyway.

NEXT ISSUE

TESTS & COMMENT on the new Fidelity and Novag machines with games from matches between them. Also some discussion on 6502 -v- 68000 processors FOR CHESS COMPUTERS!

Reproduced from POPULAR COMPUTING WEEKLY with kind permission.

US Amateur Team Tournament

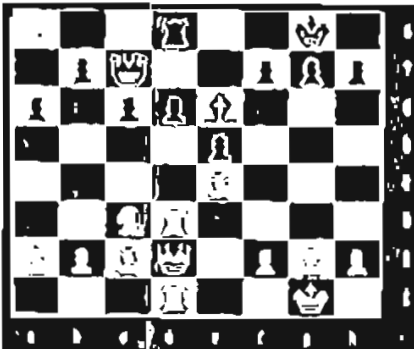
Computer chess is becoming a worldwide pastime, as evidenced by the US Amateur Team Championship held in Pasadena last February. Here, Martin Bryant offers his analysis of the results.

Recent advances in computer hardware architecture have resulted in yet another leap forward for micro-computer chess. Formerly stuck at about the Class A level (1800-2000 USCF, top club player) there is now strong evidence that some of the latest commercially available microcomputer chess machines are in the Expert category (2000-2200 USCF) and sometimes performing in the low Master range.

In February, the US Amateur Team Championship was held in Pasadena, California. This event had teams of four players in a six-round Swiss-style tournament. The chess machine manufacturer, Novag entered four of its machines. The Novag machines (all 6802 based) were Super Constellation (6MHz), Forte (5.5MHz), Expert (6MHz) and Turbo (16MHz bit-slice). Two of these machines, Super Constellation and Expert, are well known and have been publicly available for some time. The other two, Forte and Turbo, represent additions to the Novag product line.

The results from the tournament are very interesting. In the table below, the data represents the result of the outcome from the machines point of view and the opponents rating.

Note that Turbo was placed on board 2 rather than board 1 because it was an experimental machine with relatively little previous practical experience on which to judge its strength. Note also that Forte's result may be underrated because of time control problems resulting from one person



The Readers v Colossus chess tournament is now well under way - but there is still time to enter. See page 5 for details of the game so far, how to join in and prizes to be won.

operating all four machines at once.

Against master opponents, no points were scored, but only three such games were played, all by the Expert. Against expert opponents, in twelve games, a total of eight points were scored for a winning percentage of 67%. Against lower rated opponents, a total of ten games were played and six points scored for a winning percentage of 60%.

The most remarkable result of this tourna-

ment, of course, belongs to the Turbo an advanced bit-slice processor design, now commercially available. Bit-slicing involves the redesign of single processors using multiple faster chips to achieve very high speeds. Turbo's six win, clean sweep against strong opposition is remarkable. This machine has also played a 10 game speed match against USCF Senior Master Jeremy Silman and won 7.5 to 2.5 against him!

In evaluating the Turbo's result and estimating its strength, it is important to realize that it is exactly four times as fast as the original 4MHz version of the Expert. Additionally, it searches about 3000-4000 positions per second. The author, Dave Killinger, performed a test which showed that the Turbo searches the opening position of a chess game to a depth of six ply exactly four times as fast as the Expert at 4MHz, thus confirming the manufacturer's speed claims.

A rough rule of thumb used by computer chess researchers is that a machine gains about 100 ELO rating points for each doubling of speed. (This has been questioned, especially above 2000 points, with 80-90 points put forward as more accurate.) Since the Turbo is four times the speed of the Expert, one would expect a gain of 200 points, a full rating class.

The Expert is rated according to the reliable Swedish Rating List, at 1845 ELO (about 1945 USCF). Also the latest USCF rating of the Expert 6MHz is 2106. Since the Expert 4MHz is rated as a strong class A player, we can now calculate the estimated rating of the Turbo as one full class ahead of the Expert 4MHz. This would translate to a USCF rating of 2145, a strong candidate master, an excellent result for the Turbo. Dave Killinger feels that the Turbo is a 'weak Master'. Additional tournament results will supply a more definite rating. However, at the very least, Turbo (along with the top of the line Mephisto 68020 machines) are the strongest commercially marketed machines ever.

By Martin Bryant - author of CDS Colossus 4 Chess.

Board Number	1	2	3	4
Round No.	Expert	Turbo	Super-C	Forte
1	1 1615	1 1820	1 1850	0.5 1900
2	0 2396	1 2117	0 2089	1 2026
3	0 2369	1 2108	0.5 2103	0.5 2075
4	0 2217	1 2126	0 2105	0.5 2067
5	1 2115	1 1908	0.5 1789	0 1663
6	0.5 2071	1 2075	0 1996	0 1897
Total Score	2.5	4.6	2	2.5
Average opponents' rating	2130	2023	1989	1927
Machine performance rating	2027	2423	1872	1927

SCHACH & SPIELE Top Computers as per VOTE by experienced Users and Distributors in Germany, Austria, Switzerland, Holland, England, Sweden, Finland, USA and Canada.

Column 1 is for FEATURES and PLEASURE IN USE.

Column 2 is for PLAYING STRENGTH (I would have preferred to see an 'official' Rating List (such as mine!) used for this. Individual's opinions can be subjective and also inaccurate if they have only 1 or 2 machines to base their opinion on).

Column 3 is for VALUE FOR MONEY.

Bedienungskomfort		Spielstärke		Preis/Leistungs-Verhältnis	
1. SciSys Leonardo Maestro	8,60	1. Mephisto Dallas 32 Bit	9,00	1. Novag Forte	8,28
2. Mephisto Amsterdam	8,57	2. Mephisto Dallas 16 Bit	9,00	2. Mephisto Supermondial	8,20
3. SciSys Leonardo	8,50	3. Mephisto Amsterdam	8,42	3. Super Enterprise	8,00
4. Mephisto Dallas 32 Bit	8,40	4. Fidelity Par Excellence	7,75	4. Fidelity Par Excellence	7,25
5. Mephisto Dallas 16 Bit	8,33	5. Fidelity Avantgarde	7,60	5. Fidelity Excellence	7,16
6. Novag Forte	8,14	6. Novag Expert	7,28	6. SciSys Leonardo Maestro	7,00
7. Mephisto Supermondial	7,80	7. Novag Forte	7,00	7. Mephisto Rebell	6,83
8. Fidelity Avantgarde	7,40	8. SciSys Leonardo Maestro	7,00	8. Novag Expert	6,71
9. Novag Expert	6,85	9. Super Constellation	6,42	9. SciSys Leonardo	6,66
10. Fidelity Elite	6,80	10. Fidelity Excellence	6,33	10. Super Constellation	6,28
11. Mephisto Rebell	6,66	11. Mephisto Rebell	6,33	11. Mephisto MM II	6,20
12. SciSys Turbo S-24K	6,33	12. Conchess 6 MHz	6,25	12. Advanced Star Chess	6,00
13. Super Enterprise	6,25	13. SciSys Turbostar 432	6,00	13. SciSys Turbostar 432	6,00
14. Mephisto MM II	5,40	14. Fidelity Elite	6,00	14. SciSys Turbo S-24K	6,00
15. Super Constellation	5,28	15. Mephisto Supermondial	5,80	15. Fidelity Elite	5,80
16. Conchess 6 MHz	5,00	16. Mephisto MM II	5,80	16. Conchess 6 MHz	5,25
17. SciSys Turbostar 432	4,83	17. Fidelity Elegance	5,00	17. Fidelity Avantgarde	5,20
18. Conchess 2 MHz	4,80	18. Super Enterprise	4,75	18. Conchess 2 MHz	4,80
19. Chess 3000	3,66	19. Advanced Star Chess	4,66	19. Mephisto Amsterdam	3,85
20. Fidelity Elegance	3,66	20. Conchess 2 MHz	4,60	20. Fidelity Elegance	3,66
21. Fidelity Par Excellence	3,25	21. SciSys Leonardo	3,83	21. Mephisto Dallas 16 Bit	3,66
22. Fidelity Excellence	3,16	22. SciSys Turbo S-24K	3,66	22. Mephisto Dallas 32 Bit	2,80
23. Advanced Star Chess	3,00	23. Chess 3000	1,66	23. Chess 3000	2,33

A very interesting idea which brings out the opinions of the BUYER/USER regarding the Computers they like (and dislike!) and what they (rather than the Manufacturer) think is WORTH BUYING.

A final TABLE putting the Machines in order based on Geometric Averaging is quite instructive.

1 NOVAG FORTE	7.78
2 SCISYS LEONARDO MAESTRO	7.50
3 MEPHISTO SUPER MONDIAL	7.19
4 NOVAG EXPERT	6.94
5 FIDELITY AVANT GARDE	6.64
6 MEPHISTO REBELL	6.60
7 MEPHISTO AMSTERDAM	6.53
8 MEPHISTO DALLAS 16 Bit	6.50
=9 SUPER ENTERPRISE	6.19
=9 FIDELITY ELITE 2100	6.19
11 MEPHISTO DALLAS 32 Bit	6.13
12 SCISYS LEONARDO	6.01
13 NOVAG SUPER CONSTELLATION	5.97
14 MEPHISTO MM2	5.79
15 FIDELITY PAR EXCELLENCE	5.67
16 SCISYS TURBOSTAR 432	5.58
17 CONCHESS 6MHZ	5.47
18 FIDELITY EXCELLENCE	5.23
19 SCISYS TURBO S-24K	5.18
20 CONCHESS 2MHZ	4.73
21 ADVANCED STAR CHESS	4.38
22 FIDELITY ELEGANCE	4.06
23 CHESS 3000	2.42

The SCHACH & SPIELE Magazine itself produces the final table based on Arithmetic Averages and prints out the TOP TEN as follows:-

Die zehn besten Schachcomputer	
1. (3.) Novag Forte	7,80
2. SciSys Leonardo Maestro	7,53
3. (1.) Mephisto Super Mondial	7,26
4. Mephisto Dallas 16 Bit	7,00
5. Mephisto Dallas 32 Bit	7,00
6. (5.) Novag Expert	6,95
7. (2.) Mephisto Amsterdam	6,95
8. (4.) Fidelity Avantgarde	6,73
9. Mephisto Rebell	6,61
10. Super Enterprise	6,33

RESULTS from PLY MAGAZINE, Sweden.

These are always the most comprehensive result details I receive from anyone, but they are more valuable than usual to NS READERS this time as there was only space for those applying to the MEPHISTO DALLAS and AMSTERDAM machines in my last Issue.

The new list (which dates one month after the most recent PLY Magazine!) includes ALL results of games amongst the top 20 machines. After those, I have just noted those which seem relevant because they are NEW results for the lower machines, or they show changes from results previously published. Again sincere thanks are due to Goran Grotting and Thoralf Karlsson of PLY Magazine for keeping us so up-to-date with their progress.

MEPHISTO SUPER DALLAS 68020. v MEPH DALLAS 68000 13-7. v MEPH AMSTERDAM 18½-10½.
v FID AVANT GARDE 16½-5½. v MEPH REBELL 15-5. v FID PAR EXCELLENCE 4½-1½.
v NOV FORTE 16½-7½. v KASP LEONARDO M/6 1½-1½. v CONCHESS PLYMATE/6 17½-2½.
v FID EXCELLENCE/4 6½-3½. v NOV EXPERT/4 15½-4½. v MEPH SUPER MONDIAL 19-4.
v SCI TURBOSTAR 432 6½-3½. v FID EXCELLENCE/3 21½-1½.

MEPHISTO DALLAS 68000. v MEPH AMSTERDAM 15½-14½. v FID AVANT GARDE 11½-8½.
v NOV FORTE B 7½-3½. v MEPH REBELL 15½-4½. v FID PAR EXCELLENCE 26½-11½.
v NOV FORTE 14½-5½. v KASP LEONARDO M/6 13½-6½. v CONCHESS PLYMATE/6 30½-3½.
v FID EXCELLENCE/4 20-7. v MEPH SUPER MONDIAL 18½-3½. v SCI TURBOSTAR 432 27½-7½.
v FID EXCELLENCE/3 16½-3½. v NOV SUPER CONST 18-2. v SCI SUPERSTAR 36K 18-2.
v NOV QUATTRO 15½-4½. v CONCHESS/2 3-1.

MEPHISTO AMSTERDAM. v FID AVANT GARDE 75½-49½. v MEPH REBELL 12½-7½.
v FID PAR EXCELLENCE 28-12. v NOV FORTE 28-15. v CONCHESS PLYMATE/6 22-7.
v FID EXCELLENCE/4 13-3. v NOV EXPERT/4 5-3. v MEPH SUPER MONDIAL 13-7.
v MEPH MM2 9-1. v SCI TURBOSTAR 432 20-11. v FID EXCELLENCE/3 17½-4½.
v NOV SUPER CONST 54½-14½. v MEPH BLITZ 3½-½. v NOV QUATTRO 16½-3½.
v FID PRESTIGE 3-0.

PSION ATARI/8. (The appearance of Psion Atari here will be a surprise to many - (1) because it is not a dedicated chess computer but is a software programme and (2) because it is appearing so high in the Swedish listings. It is clearly not a straight 8MHz version of the Psion QL 2MHz, or it would not be doing so well! I have written programmer Richard Lang to ask for details of where it stands in relation to the QL - Amsterdam - Dallas series and will give the answers elsewhere in NEWS SHEET if they reach me in time for this publication).
v FID AVANT GARDE 8½-5½. v SUPER ENTERPRISE 5-0.

FID AVANT GARDE. v MEPH REBELL 10-10. v FID PAR EXCELLENCE 20½-20½.
v NOV FORTE 10½-9½. v CONCHESS PLYMATE/6 15½-9½. v FID EXCELLENCE/4 13-7.
v NOV EXPERT/4 50-35. v MEPH SUPER MONDIAL 11-9. v CONCHESS PLYMATE/4 14½-10½.
v SCI TURBOSTAR 432 20-9. v FID EXCELLENCE/3 14-7. v NOV SUPER CONST 15-5.
v SCI SUPERSTAR 36K 16-5. v NOV QUATTRO 15½-4½. v FID SENSORY 12 6-4.
v CONCHESS/2 1-1. v NOV CONST/2 18-2.

NOV FORTE B. v MEPH REBELL 3-5. v CONCHESS PLYMATE/6 7½-3½.
v FID EXCELLENCE/4 9-7. v CONCHESS/2 3-1.

MEPHISTO REBELL. v FID PAR EXCELLENCE 10-15. v NOV FORTE 14-11.
v KASP LEONARDO M/6 13½-8½. v CONCH PLYMATE/6 12½-8½. v FID EXCELLENCE/4 5-4.
v NOV EXPERT/4 5½-5½. v SCI TURBOSTAR 432 10½-9½. v FID EXCELLENCE/3 14-6.
v NOV SUPER CONST 6-4. v MEPH BLITZ 2-0.

FID PAR EXCELLENCE. v NOV FORTE 47½-37½. v KASP LEONARDO M/6 10-10.
v CONCHESS PLYMATE/6 46½-41½. v FID EXCELLENCE/4 17½-12½. v NOV EXPERT/4 10-10.
v MEPH SUPER MONDIAL 11½-8½. v CONCHESS PLYMATE/4 5½-4½. v MEPH MM2 10½-9½.
v SCI TURBOSTAR 432 12½-7½. v FID EXCELLENCE/3 11½-8½. v NOV SUPER CONST 44½-25½.
v SCI SUPERSTAR 36K 16½-3½. v NOV QUATTRO 16½-3½. v FID SENSORY 12 16-4.
v NOV CONST/3.6 13-7. v CONCHESS/2 16-4. v KASP TURBO 24K 7-1.

NOV FORTE. v KASP LEONARDO M/6 13-8. v CONCH PLYMATE/6 43½-40½.
 v FID EXCELLENCE/4 21½-29½. v MEPH SUPER MONDIAL 12-8. v CONCH PLYMATE/4 7-3.
 v MEPH MM2 10½-9½. v FID ELEGANCE 8½-11½. v SCI TURBOSTAR 432 19½-14½.
 v FID EXCELLENCE/3 10½-12½. v NOV SUPER CONST 21½-11½. v SCI SUPERSTAR 36K 15½-4½.
 v NOV QUATTRO 18-4. v FID SENSORY 12 16½-3½. v NOV CONST/3.6 16-4.
 v CONCHESS/2 13-7. v NOV CONST/2 15-3. v SUPER ENTERPRISE 11-3.

As reported in NS/14, the PLY testers have been using the NOV FORTE not only on its 'tourney' mode but also on its 'normal' (wider opening book) and 'random' (wider opening book and random choice of occasional 2nd. best moves). All Swedish results in this NS include this full range of mode use. Dave Kittinger advises me that 'tourney' causes the FORTE to only use Opening lines showing = or better; the 'normal' allows lines up to -7/256 to be used and was intended to give the (human) user greater variety in the openings. 'Random' was intended to weaken the machine's play slightly and ensure total variety in both openings and middle game continuations to make it virtually impossible for any game to be repeated. Dave Kittinger believes that 'normal' mode is in order in human competition (the very slight weakening is offset by the fact that it becomes much more difficult to 'prepare' for the Forte!), but that 'random' mode weakens the machine's strength by between 50 and 100 Elo. Despite this I have continued to include all the Swedish results in my Home Computer for producing the Rating List though I am aware some consider this unfairly prejudicial against the Forte. As I work with Eureka which distributes the Novag range, at least I can't be accused of bias by leaving these results in:

KASP LEONARDO MAESTRO/6. v CONCH PLYMATE/6 17-14. v FID EXCELLENCE/4 12-8.
 v MEPH SUPER MONDIAL 3-1. v SCI TURBOSTAR 432 4½-5½. v FID EXCELLENCE/3 1-4.
 v CONCHESS/2 16-4.

CONCHESS PLYMATE/6. v FID EXCELLENCE/4 92½-73½. v NOV EXPERT/4 13-9.
 v MEPH SUPER MONDIAL 16½-11½. v FID ELEGANCE 5½-4½. v SCI TURBOSTAR 432 20½-14½.
 v FID EXCELLENCE/3 14½-14½. v NOV SUPER CONST 23½-6½. v SCI SUPERSTAR 36K 11-9.
 v NOV QUATTRO 11-9. v FID PRESTIGE 4-1. v FID SENSORY 12 12½-7½.
 v NOV CONST/3.6 21½-4½. v CONCHESS/2 15½-4½. v SUPER ENTERPRISE 15½-1½.

FID EXCELLENCE/4. v NOV EXPERT/4 24-22. v MEPH SUPER MONDIAL 12½-7½.
 v CONCH PLYMATE/4 15-14. v MEPH MM2 12-8. v SCI TURBOSTAR 432 15-13.
 v FID EXCELLENCE/3 2½-½. v NOV SUPER CONST 20½-9½. v CONCHESS/4 17-7.
 v MEPH BLITZ ½-2½. v SCI SUPERSTAR 36K 12½-8½. v NOV QUATTRO 13-7.
 v NOV CONST/3.6 24-4. v CONCHESS/2 17-3. v NOV CONST/2 2-0.

NOV EXPERT/4. v MEPH MM2 4-6. v FID ELEGANCE 11½-8½.
 v SCI TURBOSTAR 432 11-9. v FID EXCELLENCE/3 22-13. v NOV SUPER CONST 16½-12½.
 v CONCHESS/4 4½-2½. v MEPH BLITZ 2-0. v SCI SUPERSTAR 36K 11-9.
 v NOV CONST/3.6 13½-6½. v CONCHESS/2 14-6. v SUPER ENTERPRISE 10-1.

MEPH SUPER MONDIAL. v SCI TURBOSTAR 432 8½-11½. v FID EXCELLENCE/3 9-11.
 v SCI SUPERSTAR 36K 14-6. v NOV QUATTRO 15½-4½. v FID SENSORY 12 1½-1½.
 v CONCHESS/2 16-4.

CONCHESS PLYMATE/4. v FID ELEGANCE 25-22. v SCI TURBOSTAR 432 9½-10½.
 v FID EXCELLENCE/3 11½-8½. v NOV SUPER CONST 38½-27½. v SCI SUPERSTAR 36K 13-7.
 v FID SENSORY 12 10-10. v NOV CONST/3.6 16½-9½. v CONCHESS/2 11-9.

MEPHISTO MM2. v SCI TURBOSTAR 432 16½-19½. v FID EXCELLENCE/3 7½-8½.
 v NOV SUPER CONST 8½-6½. v SCI SUPERSTAR 36K 15½-4½. v FID SENSORY 12 9-5.
 v NOV CONST/3.6 14-6. v NOV CONST/2 4-1.

FID ELEGANCE. v SCI TURBOSTAR 432 16½-13½. v FID EXCELLENCE/3 ½-1½.
 v NOV SUPER CONST 9-8. v CONCHESS/4 28½-23½. v FID SENSORY 12 11½-3½.
 v NOV CONST/3.6 17½-6½. v CONCHESS/2 7½-4½. v NOV CONST/2 14-6.
 v SUPER ENTERPRISE 10½-1½.

SCI TURBOSTAR 432. v FID EXCELLENCE/3 13-12. v NOV SUPER CONST 31½-29½.
 v CONCHESS/4 10-9. v MEPH BLITZ 17½-9½. v SCI SUPERSTAR 36K 10-10.
 v NOV QUATTRO 12-8. v FID PRESTIGE 7-4. v FID SENSORY 12 15-5.
 v NOV CONST/3.6 14½-7½. v CONCHESS/2 12-8. v NOV CONST/2 18-7.
 v SUPER ENTERPRISE 7-1. v KASP TURBO 24K 2-1.

FID EXCELLENCE/3. v NOV SUPER CONST 30½-21½. v CONCHESS/4 14½-10½.
 v MEPH BLITZ 4-5. v SCI SUPERSTAR 36K 13½-6½. v NOV QUATTRO 15-5.
 v FID SENSORY 12 14½-5½. v NOV CONST/3.6 14-6. v CONCHESS/2 13-9.
 v NOV CONST/2 22-4. v SUPER ENTERPRISE 9-5.

NOV SUPER CONST. v CONCHESS/4 46-44. v MEPH BLITZ 9½-7½.
 v SCI SUPERSTAR 36K 11½-9½. v NOV QUATTRO 14½-5½. v FID PRESTIGE 9½-10½.
 v FID SENSORY 12 10-3. v NOV CONST/3.6 19½-5½. v CONCHESS/2 12½-11½.
 v NOV CONST/2 25-11. v MEPHISTO MONDIAL 10-4. v SUPER ENTERPRISE 9½-1½.

CONCHESS/4. v SCI SUPERSTAR 36K 6-8. v FID PRESTIGE 27-12.
 v FID SENSORY/12 8½-6½. v NOV CONST/3.6 10½-9½. v NOV CONST/2 8½-2½.
 v SUPER ENTERPRISE 5½-4½.

Other Results which may interest Readers:-

SCI SUPERSTAR 36K -v- NOV QUATTRO 11½-11½. NOV QUATTRO -v- FID SENSORY 12 8½-11½.
 NOV QUATTRO -v- NOV CONST/3.6 12-8. NOV QUATTRO -v- CONCHESS/2 13-7.

KASP TURBO 24K. v FID SENSORY 12 5-15. v NOV CONST/3.6 5-15.
 v FID SENSORY/9 7-13. v CONCHESS/2 4-16.

KASP TURBO 16K. v NOV CONST/3.6 4-16. v NOV CONST/2 4-16.
 v MEPH MONDIAL 8½-11½. v SUPER ENTERPRISE 5-5.

That concludes the Swedish results except to refer to the disappointing Results of 2 of the 3 Computers entered in the Swedish Open. These contrast sharply with the particularly good results obtained by Novag in Tournaments (v humans) in both England and Greece and referred to elsewhere.

In the Swedish Open the MEPH DALLAS 68000 was entered in class 1 and obtained 3½/7 against Swedish rated opponents at 1904. This converts to a BCF rating of 179 on my scale. The NOV FORTE B was also in class 1 and scored 2½/7 against Swedish rated opponents at 1895, and the Forte B result works out at 163 BCF. The Computer which didn't let the side down was the KASPAROV LEONARDO M/6 which was entered in class 2. It scored 6½/9 against an opposition average of 1717 and gets a converted rating of 177 BCF, nearly the same as the Dallas.

CURRENT SCORES from NEWS SHEET READERS.

NOVAG PRIMO -v- SUPER ENTERPRISE 11-4. NOVAG PRIMO -v- FID EXCELLENCE/3 2½-5½.
 NOV FORTE -v- SCI TURBO KASP 16½-14½. SCI TURBO KASP -v- CONCHESS/2 11½-4½.
 NOV FORTE -v- COLOSSUS 4 7½-3. COLOSSUS 4 -v- CONCHESS/2 1½-3.
 MEPHISTO SUPER DALLAS 68020 -v- MEPH AMSTERDAM 11½-3½.
 NOV FORTE B -v- MEPH REBELL 3-0. NOV FORTE B -v- MEPH DALLAS 68020 2½-5½.
 NOV FORTE B -v- SCI TURBO KASP 6½-3½.
 ADVANCED STAR CHESS (SUPER ENTERPRISE) -v- MEPHISTO 3 15½-5½.
 NOV FORTE -v- SCI TURBOSTAR 432 4-1. FID SENSORY 9 -v- COLOSSUS 4 6-6.
 KASP LEONARDO M/6 -v- FID ELITE C 19½-10½. KASP LEONARDO M/6 -v- MEPH REBELL 4-2.
 KASP LEONARDO M/6 -v- FID PAR EXCELLENCE 6-4.

Tournament Reported in SCHACH & SPIELE:-

MEPH DALLAS 68000	14½/18	2244 performance
FID PAR EXCELLENCE	7½	1985
FID AVANT GARDE	7	1962
MEPH SUPER MONDIAL	7	1986

LARRY KAUFMAN'S RESULTS, 1 min per move.

Sincere thanks to Larry for again sending us the fruits of his hard work.

Larry's results using the FORTE and FORTE B on 'normal' have been excluded. Like myself Larry has found a 40 Elo gap between Tournament and Normal settings when the Computers are played against other Computers. Thus only the Tournament setting results are included here in computer-v-computer games. In human Tournaments the Normal setting is a different kettle-of-fish in that it produces a variety that (1) makes the Forte/Forte B extremely difficult if not impossible to prepare against and (2) results in the Machine coming up with Opening lines that can occasionally give experienced players quite a nasty shock. However in Sweden their computer-v-computer results are apparently no different for either setting.

	MD020	MD000	MA	NE/16	NE/6	NE/5	FPE/8	FPE/5	FE/4	FE/3	TK/5	TK/4	NFB	MSM	FAG	S3	PSI	NSC
MEPHISTO DALLAS 68020	*****	2 1/2-1 1/2	2-2	7 1/2-2 1/2	6-2	4-0	5-3	7-3	3-1	4-0	3-1	4-0	4-0	2-2	2 1/2-1 1/2			
MEPHISTO DALLAS 68000	1 1/2-2 1/2	*****	3-1	4 1/2-5 1/2	3 1/2-4 1/2	4-0	6 1/2-1 1/2	3 1/2-1 1/2	3 1/2-1 1/2		3-1	4-0	4-0	3 1/2-1 1/2	3-1			
MEPHISTO AMSTERDAM	2-2	1-3	*****	2-2	5 1/2-2 1/2		5-3	3 1/2-1 1/2	3-1		3-1	2 1/2-1 1/2	2 1/2-1 1/2	3-1	2-2			3 1/2-1 1/2
NOVAG EXPERT/16	2 1/2-7 1/2	5 1/2-4 1/2	2-2	*****			4-0											
NOVAG EXPERT/6	2-6	4 1/2-3 1/2	2 1/2-5 1/2	*****			2-2	2 1/2-1 1/2	3 1/2-1 1/2		2-2	2 1/2-1 1/2	2 1/2-1 1/2	1 1/2-2 1/2	1 1/2-2 1/2			2-2
NOVAG EXPERT/5	0-4	0-4		*****	2 1/2-1 1/2	1 1/2-2 1/2	*****			3-1			2-2	2 1/2-1 1/2	4-0			
FID PAR EXCELLENCE/8	3-5	1 1/2-6 1/2	3-5	0-4	2-2	1 1/2-2 1/2	*****				2-2		2-2	2-2	2-2			
FID PAR EXCELLENCE/5	3-7	1-3 1/2	1-3 1/2	1 1/2-2 1/2	2 1/2-1 1/2		*****			6 1/2-5 1/2	2-2	2 1/2-1 1/2	2 1/2-1 1/2	2-2	2-2			1 1/2-2 1/2
FID EXCELLENCE/4	1-3	1-3 1/2	1-3	1-3 1/2			*****		*****		2-2	2 1/2-1 1/2	1-3	2-2	2-2			3-1
FID EXCELLENCE/3	0-4					1-3			*****	2-2	2-2	2-2	1-3	2-2	1-3			2 1/2-1 1/2
SCI TURBO KASP/5 1/2	1-3	1-3	1-3	2-2	2-2	2-2	5 1/2-6 1/2	2-2	2-2	2-2	*****	1 1/2-2 1/2	1 1/2-2 1/2	1-3	5-5	2 1/2-1 1/2		2 1/2-1 1/2
SCI TURBO KASP/4				1 1/2-2 1/2					1 1/2-2 1/2		*****							5 1/2-4 1/2
NOVAG FORTE B	0-4	0-4	1 1/2-2 1/2	2-2	1 1/2-2 1/2		2-2	1 1/2-2 1/2	3-1	3-1			*****	1 1/2-2 1/2	2 1/2-1 1/2			3 1/2-1 1/2
MEPH SUPER MONDIAL	2-2	1-3 1/2	1-3	1 1/2-2 1/2	1 1/2-2 1/2	2-2	2-2	2-2	1 1/2-2 1/2	2-2	3-1	2 1/2-1 1/2	2 1/2-1 1/2	*****	2-2	3 1/2-1 1/2		2 1/2-1 1/2
FID AVANT GARDE	1 1/2-2 1/2	1-3	2-2	2 1/2-1 1/2	0-4				5-5	5-5	1 1/2-2 1/2	2-2	1 1/2-2 1/2	2-2	*****			3 1/2-1 1/2
SARGON 3									1 1/2-2 1/2					1-3 1/2	*****			2-2
PSION 1/8				2-2	2 1/2-1 1/2					3-1			1-3 1/2	1 1/2-2 1/2	*****			*****
NOV SUPER CONST		1-3 1/2		1-3	1 1/2-2 1/2	1 1/2-2 1/2	4 1/2-5 1/2			1 1/2-2 1/2	1 1/2-2 1/2	1 1/2-2 1/2	1 1/2-2 1/2	1 1/2-2 1/2	1-3 1/2	2-2		*****

Notes: PSION 1 is not the same programme as the PSION (2) ATARI involved in Swedish results. MEPHISTO REBELL results are:-
 -v- FID PAR E/8 2 1/2-5 1/2 -v- FID PAR E/5 3-5. Larry's MEPH SUPER MONDIAL results are better than mine or Sweden's; the PAR E at 8MHz virtually the same as at 5MHz. MD68000 2237, MD68000 2233, NE/16 2209, MA 2194, NE/6 2132, MSM 2102, NE/5 2101, FPE/8 2086, NFB 2079, STK/5 1/2 2072, FAG 2069, FPE/5 2052, PSION 1 2052... ratings as at 20 July 1987.

The NOVAG FORTE B at the KING's HEAD London Open, Porchester Hall, June 1987

The FORTE B was referred to in NS/14 being a development from the original FORTE programme and representing a part of the playing programme which marks Novag's next step of progress from Forte to SUPER FORTE. In the main the changes for the FORTE B involve the select and search strategies affecting the middle-game and the programme runs from 25% to 100% faster in middle-game situations, the variation depending on the position under consideration.

White. R DEMMING (176 BCF)
Black. NOVAG FORTE B

Modern Benoni by transp.

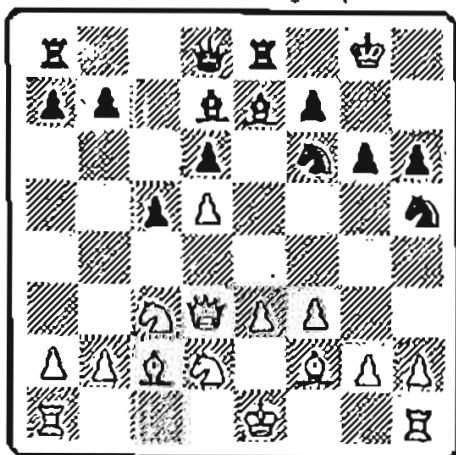
1 d4 c5!

The exclamation mark is because you'd think that Black was the human trying to get the Computer out of its Book! You have to be ready for anything when you're playing the Novag machines!

2 d5 Nf6
3 c4 e6
4 Nc3 exd5
5 cxd5 d6
6 Bf4 Nbd7

Despite the unusual move order the FORTE B has been able to play from its Opening Book until now.

7 Nf3 Be7
8 e3 Nh5
9 Bg3 O-O
10 Bd3 h6
11 Bc2 Nf6
12 Qd3 Bg4
13 Nd2 g6
14 f3 Bd7
15 Bf2 Re8



In the KING's HEAD, played at 45 moves in 1½ hours, the Forte B not only gained an impressive 194 BCF (2152 Elo) Grading, but also played some interesting chess. I am preparing a leaflet for Eureka covering some of the games and I have given myself permission to use just one of them here!

16 0-0-0!?

An interesting idea which may be positionally debatable but actually gives the chance of a strong combination at move 19.....

16 - b5
17 Nxb5 Bxb5
18 Qxb5 Nxd5
19 Bb3? -

Perhaps the ? is unfair, but there seems to be a combination here starting with 19 Bxg6: which White misses. Playing the 1986 World Champion MEPHISTO DALLAS as White from this position against the 1987 FORTE B and at 3 mins per move, play continued:- 19 - fxc6 20 Qc4 Rb8 21 Qxd5+ Kg7 22 Nc4! (to guard b2) Nf6 23 Qd3 Rf8 24 Bg3 d5 25 Bxb8 Qxb8 26 Nd2 c4 27 Qc3 Bb4 28 Qd4 c3 29 Nb3 Rc8 30 Qd3 a5 (White has clearly been winning, but FORTE B is beginning to penetrate and threatens a4) 31 Qa6 Qc7 32 Qe2 Qc6 33 Qd3 Qa4 34 Qa6 Qxa2! 35 Qb7+ Nd7 36 Qxd7+ Kf6 37 Rd2 (stopping Qxb2++) cxd2+ 38 Kd1 Qb1+ 39 Ke2 Qe1+ 40 Rxe1 dxe1=Q+ 41 Kd3 Qd1+ 42 Nd2 Qxd2 mate. An impressive performance by FORTE B against a clear improvement on the game move played.

19 - Nb4!

Innocuous?! - did you say? Superb infiltration!

20 g4 Rb8
21 Qe2 Nf6

It is interesting and revealing to compare different Computers and their evaluations of certain positions. Here the FORTE B is almost alone in its optimism for Black's position though we believe (and the game shows) it is right.

22 h4 Qa5
23 Kb1 d5
24 a3 c4
25 Nxc4 dxc4
26 Qxc4? -

Definitely inferior to 26 axb4 though Black still has the advantage after - Rxb4 27 Bxc4 Rb8

26 - Nbd5
27 g5 Rec8

At +1.80 the FORTE B already rates his position as the equivalent of nearly two pawns up. After White's next it goes to +6!

28 Qd3? Nc3+
29 Kc2 Nxd1+
30 Kb1 Nc3+
31 Kc2 Nce4+
32 resigns
0-1

Apart from mate threats, Black has the fork Nxf1 & a gory ending such as 32 Kb1 Nd2+ 33 Ka2 Rxb3 34 Qxb3 (or Rxa3+ 35 bxa3 Qxa3++) Nxb3 35 gxf6 Nc1+ 36 Kb1 Qf5+ 37 e4 Qxf3 38 Rxc1 Qxe4+, so White does the sensible thing rather than draw a crowd!

MEPHISTO SUPER DALLAS 68020 -v- MEPHISTO AMSTERDAM

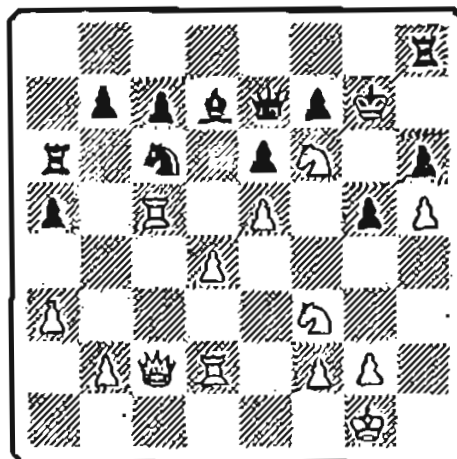
This match is currently being run by Gerald Murphy and is at 3 mins per move. At the time of writing these notes the score is 13-4 for the SUPER DALLAS (+9=8 ... rather comprehensive!). The following was the 13th. game and shows up well some of the Super Dallas strong points including the improved understanding of the value of passed Pawns. Notes are by Paul Shimmins and Eric Hallsworth.

White SUPER DALLAS -v- Black AMSTERDAM

1 Nf3 d5 2 d4 Nf6 3 Bg5 g6 4 Nbd2 Bg7 5 e3 (Both machines now leave their Opening Books), - Nc6 6 c4 O-O 7 cxd5 Nxd5 8 Bc4 h6 9 Bh4 a6 10 O-O ReB 11 Rc1 Qd7 12 Qc2 Rd8 13 Bg3 e6 (At moves 12 and 13 most machines choose Ncb4 for Black, including Paul's MM2 and the Forte), 14 a3 Qe7 15 Bb3 Nb6 16 Bh4 Bf6 17 Bxf6 Qxf6 18 Ne4 Qe7 19 Rfd1 Bd7 20 Nc5 Ra7 (Betraying human traits? Most humans would dislike the embarrassment of returning the Bishop to c8, though it looks better, and would perhaps choose the move played to 'save face'. "Did the Amsterdam blush, Gerald?"): 21 e4 Qf5 22 Qd2 (MSD is not interested in the Bishop for Knight exchange which many Chess Computers still consider obligatory. Why exchange a powerfully posted and active Knight for a lame Bishop?), - Kh7 23 e5 Qe7 24 Ne4! a5 25 Nf6 Kg7 26 Bc4! (Another good piece of Knight -v- Bishop evaluation), - Nxc4 27 Rxc4 Raa8 28 Qc2 Bc8 29 Rc5 Ra6 30 Rd2 Bd7 31 h4 Rh8 32 h5 g5 (A neat little combination now by White, beginning with the d-pawn push, will leave MSD with a slight but telling advantage).

33 d5 Nxe5 (33 - exd 34 Nxd5 Qd8 35 Nf6 looks even better for White). 34 Nxe5 Ba4 35 Rxc7 Qxf6 36 Qe4! Be8? (The best chance was to avoid the passed-Pawn by 36 - exd5 37 Rxd5 Re8 38 Qd4 Rxe5 (if Bc6 39 Rxf7+ Qxf7 40 Nxf7+ Kxf7 41 Rf5+ wins easily) 39 Qxe5 Re6 40 Qxf6 Kxf6 41 g4... and White clearly stands much better but the game went to move 85 on 'auto-play' before the decision was reached). 37 d6! Bc6

38 Qg6+ Qxg6 (With the Queens off and a protected passed-Pawn White now has an enormous upperhand). 39 hxg6 Rf8 40 Rxf7 Rxf7 41 Nxf7 Kxg6 (Perhaps 41 - b5 would be better, but prospects are still hopeless after 42 d7 Bxd7 43 Rxd7). 42 Ne5 Kf5 43 Nxc6 bxc6 44 d7 Ra8 45 d8=Q Rxd8 46 Rxd8 Ke5 47 Rh8 h5 48 Rxh5 Kf4 (1-0).



(Position after 32 h5 g5.)

Whilst on the subject of the SUPER DALLAS I learn from Richard Lang that the 'contempt/respect' factor which Gerald had wondered about as reported in NS/14 is 'certainly not used' and that the difference between SUPER Dallas and the 68000 is 'just some small changes to some tree pruning parameters which mean that the 68020 may conduct a slightly 'fuller' search than the 68000'. Richard admits to puzzlement that the 68020 and 68000 have results which differ so nominally in some cases as his work and tests have convinced him there is a strong difference (as the NS Rating List has always shown!).

The following report and games from a COMPUTER CHESS TOURNAMENT at YORK UNIVERSITY is reproduced in NEWS SHEET with the kind permission of its author, Jinder Singh. My thanks to you, Jinder, this is just the sort of thing which helps out as well as entertains.

COMPUTER CHESS AT YORK UNIVERSITY, 1987.

by S.J. Singh

A new feature of the 1986-7 season was the organisation of two computer chess tournaments by Alastair Cargill. The first of these, held in the Spring term, was an all-play-all double round affair in which Alastair's Novag Forte was surprisingly eclipsed by Bruce Dunham's SciSys Turbostar Kasparov. The second took place recently with a wider field:

COMPUTER

Fidelity Sensory 9
 Fidelity Excellence/3MHz
 Mephisto Rebell/5MHz
 Novag forte
 Novag Super Constellation
 Novag Expert/4MHz
 SciSys Turbostar Kasparov
 Psion QL Chess

DUNER

Ian Hodges
 Stephen Gaunt
 Jinder Singh
 Alastair Cargill
 Andrew Boa
 Jinder Singh
 Bruce Dunham
 operated by Ian Hodges

Each computer had to play the others once only, and due to the obvious constraint of having to finish the tournament in one day the computers were operated at approximately 30 seconds per move. The big questions being asked at the start were:

(1) would the Turbostar (nicknamed unaffectionedly "Turds" by the majority of the assembled computer chess hacks) repeat it's surprise performance of March? AND

(2) would "Fred" forte score the requisite 5/7 to avoid being sent away by Alastair to be upgraded?

Before the round-by-round account, a hint: due to the rapid playing speed take the games below with a pinch of salt! It's not grandmaster chess, but these computers would beat a high proportion of human chess players at half an hour each on the clocks.

Round 1:

Rebell 1-0 Expert
 Forte 5-5 Excellence
 Turbostar 1-0 QL
 Sensory 9 0-1 Super Const.

No upsets so far, though "Eric" Excellence lived up to its owner's "draw master" tag. From the opening White had a plus with the Black bishop pair being shut in behind pawns, but the forte went wrong by shutting its queen out on h4 and

had to salvage the draw in the ending:

1.e4 c5 2.Nf3 d6 3.d4 e+d4 4.N+d4 Nf6 5.Nc3 Nc6 6.Bg5 e6 7.Qd2 a6 8.O-O-O Bd7 9.f4 Be7 10.Nf3 b5 11.B+f6 g+f6 12.f5 Qa5 13.Kb1 O-O-O 14.g3 Kb8

Both machines were now out of book. 15.f+e6 f+e6 16.Bg2 Rc8 17.Rhf1 b4 18.Ne2 h6 19.Nf4 Rhg5 20.Nd3 h5 21.Qh6 Rh8 22.Qf4 Ne5 23.Nd+e5?! d+e5 24.Qh4?! Qb5 25.Rf2 Qc7 26.Ne1 Bc5 27.Rfd2 Re3 28.Q+f6 B+d2 29.R+d2 Bc4

What is Black threatening? (...why does White reply 30.Nf3 ?)

30.Nf3 Qa5?! (...Rhd8) 31.Q+e5 Q+e5 32.N+e5 Bb5 33.a3 b+a3 34.Nf7 Rhf8 35.Nd6 Rc7 36.b+a Ka7 37.N+b5 a+b5 38.Kb2 e5 39.c3 R7f7 40.Kc1 Rf2 41.Bh3 R+d2 42.K+d2 Rf2+ 43.Ke3 R+h2 44.Bf1 Rc2 45.B+b5 R+c3+ 46.Kf2 Rc2+ 47.Be2 Ra2 48.a4 Kb6 49.a5+ ...K+a5 50.Ke3 Kb4 51.Bh5 Rb3+ 52.Kf2 Kc5 53.g4 Kd4 54.Bg6 Ra2+ 55.Kg3 Ra8 56.Bf5 Rg8 57.Kf3 Rg7 58.Kf2 Kd3 59.Kf3 Rg5 60.Be6 Rg6 Draw.

Round 2.

Super Const. 5-5 Expert
 QL 0-1 Rebell
 Excellence 0-1 Turbostar
 Sensory 9 0-1 Forte

A good round for Black; the Rebell had to resort to swindling (not the only time this happened to the QL!). Meanwhile the Turbostar despatched "Eric" with ease:

1.c4 e6 2.Nf3 d5 3.g3 Be7 4.Qa4+ Bd7 5.Qb3 dxc4
 6.Qxc4 Bc6 7.Bg2 Nf6 8.Nc3 Nbd7 9.O-O Nb6 10.Qb3 O-O 11.d4 Bxf3 12.Bxf3 c6 13.e3
 Qd7 14.Bd2 c5 15.dxc5 Bxc5 16.Rad1 Rac8 17.Bg2 Qe7 18.Ne2 e5 19.f4?! ef 20.Rf4
 Rfd8 21.Nd4 Nbd5 22.R4-f1 Qd7 23.Qd3 Ng4 24.Rf5 Ndxe3! 25.Bxe3 Nxe3 26.Rc5 Rc5
 27.Qe3 Rc4 28.b3 Rd4 29.Rxd4 Qxd4 30.Qxd4 Rxd4 31.Bb7 Rd1+ 32.Kf2 Rd2+ 33.Ke3
 Rg2 34.h4 Kf8 35.Be4 g6 36.Bd5 Ke7 37.Ke4 Re2+ 38.Kd3 Rb2 39.Kd4 Rd2+ 40.Ke4 f5+
 41.Ke5 Rd3 42.h5 g+h5 43.b4 Rg3 44.Kf5 Kd6 45.Be4 Rb3 46.Kg5 Rb4 47.Bh7 h4
 48.Bd3 h3 49.Bf1 h2 50.Bg2 Rb1 51.Kf4 a5 52.Ke4 a4 53.Kf4 a3 54.Kg3 h1=Q 55.B+h1
 R+h1

Q=1

Round 3.

Expert 1-0 QL
 Forte 1-0 Super Const.
 Rebell 0-1 Excellence
 Turbostar 1-0 Sensory 9

Steve was grinning all over due to the following game!
 Rebell vs Excellence,

1.e4 c5 2.Nf3 d6 3.d4 cxd4 4.Bb5+ Bd7 5.Bxd7 Nxd7 6.Qxd4 Nf6 7.Bg5 h6 8.Be3 e5
 9.Qa4 b5 10.Qxb5 Qc7 11.c3 Rb8 12.Qa4 Rxb2 13.O-O Rb7 14.Rd1 Be7 15.Na3 O-O
 16.Rab1 Nc5 17.Bxc5 dxc5 18.Rxb7 Qxb7 19.Nxe5 Qxe4 20.Qxe4 Nxe4 21.Rd7 Bf6
 22.Nac4 Rb8 23.g4 Nc3 24.Ra7 Bxe5 25.Nxe5 f6 26.Nd7 Rc8 27.a4 c4 28.Nb6 Rc6
 29.Ra8+ Kf7 30.a5 Nb5 31.Rd8 c3 32.Rd1 Nd4 33.Rxd4 c2 34.Rd7+ Kg6 35.Kg2 c1=Q
 and Black won on move 48.

Q=1

Round 4.

Excellence 1-0 Expert
 Forte 0-1 Kasparov (no, not Gary!)
 Super Const. 1-0 QL
 Sensory 9 0-1 Rebell

"That ~~lame~~ machine" won again to move to 4/4 in a well played Sicilian Scheveningen. White wasted time (Bb5-e2-f1 circa move 20) instead of trying to organise the thematic b2-b4 & c4-c5. After 24...Bxd2 the knight on e5 was inviolate, and a few moves later the Turbostar invaded on the dark squares

1.e4 c5 2.Nf3 d6 3.d4 cxd4 4.Nxd4 Nf6 5.Nc3 e6 6.Be2 Be7 7.O-O O-O 8.f4 Nc6
 9.Be3 e5 10.Nb3 e+f4 11.R+f4 Be6 12.Nd4 Nxd4 13.Bxd4 Nd7 14.Kh1 Qa5 The
 machines were now out of book .15.Nd5 Bxd5 16.Bc3 Qc5 17.e+ d5 Ne5 18.Bb4 Qc7
 19.Re4 Bf6 20.Bb3?! a6 21.Qe2 Rfe8 22.Bf1 Rac8 23.Rc1 Bg5(!) By the last two
 moves, the Turbostar has forced off the dark-squared bishops - soon its advantage
 will be apparent.
 24.Rd2 Bxd2 25.Qxd2 f5! 26.Re1 Qb6 27.c4 (at last)...h6 28.b4 Re7 [Intending
 29...Ng4, 30...Nf2+, etc.] 29.Qf4?! Qxb4 30.Qxf5 Rf8 31.Qc2 Qc5 32.Qb3 Rf2
 [32...Ng4 33.g3/h3 Qf2! looks very strong] 33.Rb1 Rc7 34.Re4 R7-f7 35.Be2 Kh7
 36.h3 Kg8 37.Qb6 Qa3 38.Qd2+ Kn7 39.Re1 R7-f4 40.R+f4 R+f4 41.Qb6 Qxa2 42.Qxd4?
 Re4 oops! Perhaps the forte had only calculated 43.Bd3 Nxd3 44.Rxe4 previously,
 missing ...Nf2+.
 43.c5 Rxe2 44.Rf1 Qc4 45.Rb1 Qe4 46.Rg1 Rd2 (...Nf3!) 47.Qe6 Qd5 48.Qf5+ g6
 49.Qf8 Rc2 50.Qe7+ Nf7 51.Qf8 a5 52.Qe7 Kg7 53.Qc7 Rxc5 and Black eventually won
 on move 87

Q=1

Again the QL played sound positional chess only to let itself be "cheapo-ed":

1.a4 e5 2.Nf3 Nf6 3.Nxe5 d6 4.Nf3 Nxe4 5.d4 d5 6.Rd3 Be7 7.O-O Nc6 8.c4 O-O
 9.cxd5 Qxd5 10.Bc2 Qf5 11.Bb3 Qd6 12.d5 Na5 13.Nd4 Bg6 14.Nc3 Nxb3 15.Qxb3 Nc5
 16.Qb4?! a5! The White Queen is forced out of play.
 17.Qa3 Qd3 18.Re1 Qf6 19.Be3 b6 20.Nc6 Bd6 21.Bd4 Qf4 22.Qe5 Bxe5 23.Rxe5 Rfe8
 24.Rxe8 Rxe8 25.Rd1 Bc2 26.Rf1 Bf5 27.Nxa5?! Bd3 28.Rd1 Bc2 29.Rf1 Rg8 30.Ne2
 ...Qd2 31.Nc4 Rxa3 32.Nxd2 Rxa2 33.Nc3 Rxb2 34.Nc4 Rb3 35.Nd1 b5 Would you
 believe that Black could lose in only ten more moves?
 36.Re1 h5 37.d6 Bxd1?? (why not 37...cxd6 38.Nxd6 Rb1 ?)
 38.dxc7 Bg4 39.h3 Bb6 (or ...Bf5 40.Nd6) 40.Rxe6! Rb1+ 41.Kh2 Nxe6 42.c8=Q Kh7
 43.Ne5 Rb2 44.Nxf7 Rxf2 45.Qxe6 Resigns

1=0

Round 5

Rebell 0-1 Forte
 Turbostar 1-0 Super C.
 QL 0-1 Excellence
 Expert 1-0 Sensory 9

While "Stan" was being zapped by the Turbostar, "Fred" displayed good endgame judgement for a computer. The Rebell erred in the position below by not keeping the opposite coloured bishops and from then on it was downhill all the way:

White: Ph2, f2, d5, c4, b3; Kg2; Ra2; Be6. Black: Ph7, g6, d6, b6, b7; Ke5; Re7; Bc3.
 41. Bc8 Rc7 42. Rc2?! R*c8 43. R*c3 Black has the plusses of a more compact pawn structure which is well protected by the Black rook on the second rank, and a more active king.

43... Rc7 44. Re3+ Kd4 45. Kf3 Rf7+ 46. Ke2 b5 47. Rd3+ Kc5 48. c*b5 K*b5 49. Ke3 Rf5 50. Rd4 Re5+ 51. Kd3 Rh5 52. h4 Rf5 53. Ke3 Re5+ 54. Kd3 Kc5 55. b4+ Kb5 56. Kd2 Rf5 57. Ke3 Ka4 58. f3 Re5+ 59. Kd3 Re1 60. Kc2 b5 61. Rf4 Re5 62. Kd3 Rd5+ 63. Ke2 Re5+ 64. Kd2 Rf5 65. R*f5 g*f5 66. Kc3 h5 67. f4 d5 68. Kc2 K*b4

0-1

Round 6

Sensory 9 1-0 QL
 Forte .5-.5 Expert
 Super C. 1-0 Excellence
 Turbostar 0-1 Rebell

At last! The Turbostar suffered a hiccup to at least add some interest to the final round. The game swung back and forth; B.d*c5 would have been poor if Black had ignored his h7 pawn on move 11 and played the sharp 11...f6. By move 17-

18 the Rebell had been driven back, but then White grabbed the c6 pawn, opening both the a8-h1 diagonal & the c-file for a counterattack:

1. e4 e6 2. d4 d5 3. Nd2 Nf6 4. e5 Nfd7 5. Bd3 c5 6. c3 Nc6 7. Ne2 Qb6 8. d*c5?!
 The Turbostar was out of its book. 8... B*c5 9. f4 Bf2+ 10. Kf1 0-0 11. Qc2 h6?!
 12. b3 Rd8 13. Bb2 Qe3 (don't ask me what Black's trying to do!)
 14. Bb5 a6 15. B*c6 b*c6 16. c4 d*c4 17. N*c4 Qa7 18. Na5 Nb8 19. N*c6?

19... N*c6 20. Q*c6 Bb7 21. Qc2 Rac8 22. Bc3 Bh4 23. g3 B*h1 24. g*h4 Qe3 25. Qb2 Qh3+ 26. Ke1 Q*h2 27. Ba5 Q*h4+ 28. Kf1 Rd3 29. Kg1 Be4 30. Nd4 Qh1+ 31. Kf2 Qg2+ 32. Ke1 Q*b2 33. Nc2 R*c2 34. Rd1 Re2+ 35. Kf1 R*d1+ 36. Be1 Re2*d1 mate

0-1

Meanwhile the Sensory 9 finally won, against the unfortunate QL. The former's position throughout was unenviable until the QL allowed the tricks around move 30:

1. f4 d5 2. Nf3 Nf6 3. e3 Bg4 4. Bb5+ c6 5. Be2 e6 6. 0-0 Bd6 7. d4 Nbd7 8. Nc3
 ... 0-0 9. Bd3 Qc7 10. Bd2 Rfe8 11. Qe2 Rac8 12. Rae1 h6 13. Kh1 b5 14. a3 a6 15. Qd1 c5
 16. a4 c*d 17. e*d B*f4 18. B*f4 Q*f4 19. a*b a5 20. Qd2 Qc7 21. Qc1 B*f3 22. R*f3 e5
 23. Rfe3 e4 24. Be2 Nf8 25. Rg3 Ne6 26. Rf1 Ng5 27. Qe3 Kf8 28. Kg1 Qd6 29. Qf2 Qb6
 30. N*d5! N*d5 31. R*g5 Nf6 32. Rc5 R*c5 33. d*c5 Qc7 34. b6 Qe5 35. c3 Qd5 36. Qd4 Rcb
 37. Q*d5 N*d5 38. b7 Rb8 39. Bc4 Nf6 40. c6 Ke7 41. c7 R*b7 42. c8=Q

1=0

Round 7

The last round provided all the twists one could hope for. The Turbostar lost to "Eddie" Expert after recovering well from the opening. It's queenless middlegame attack should have lead to the decimation of "Eddie's" Qside, but the swindle h4-h5-h6+ (why didn't "Turbs" play ...g*h5 ?) opened the way for the Rebell and the Forte:

White: Expert.....1 1. e4 e6 2. c4 e5 3. d4 e*d4 4. Q*d4 Nf6 5. e5 Bb4+ 6. Bd2 c5
 Black: Turbostar..0 7. Qf4 Nh5 8. Qg4 g6 9. B*b4 c*b4 10. Nf3 Nc6 11. Qe4 0-0
 12. Qe2 d6 13. g4?! Where is White going to castle now?
 ... Ng7 14. e*d6 Q*d6 15. h3 f5(!) 16. g*f5 B*f5 17. Qd5+ Qe6 18. Nbd2 Rae8 19. Q*e6+
 ... R*e6 20. Kf1 Rfd8 21. Re1 Nh5 22. c5 Kg7 23. Bc4 R*e1+ 24. K*e1 Re8+ 25. Kf1 Nf4
 26. h4 g*d3+ 27. Kg1 Nb5 28. B*d3 N*d3 29. Kg2 Re2 With victory within reach the
 Turbostar now suffers last-round nerves.

30. h5 R*f2+?! 31. Kg3 Re2 32. h6+ Kf7? 33. Ng5+ Kg8 34. Nde4 Nc6 35. Nf6+ Kf8
 36. Ng+h7+ Kf7 37. Rf1(!) Ke7 38. Nd5+ Ke6 39. Nh6 Nce5 40. h7 Re3+
 (or 40... Nf7 41. Nc7+ Ke7 42. Ng8+ intending R*f7

... Ke5 43. Nd7+ " ") 41. N*e3 and White won soon.

Meanwhile the Excellence could only scrape a draw with its predecessor "Charlie" ,the Forte megaswindled the QL and the Rebell finally won a convincing game:

White:Rebell....1 1..d4 Nf6 2..c4 d6 3..Nf3 e6 An odd opening 4..e3 Be7 5..Bd3
Black:Super C....0 ...c5 6..0-0 Nd7 7..Bd2 0-0 8..Nc3 d5 But now it looks like
a typical QP opening.9..b3 Nb6 10..c*d5 e*d5 11..Rc1 Re8
12..d*c5 B*c5 13..Nb5 The first sign of trouble :13...Be7/f8 14..Nc7.

13...Nbd7 14..b4(!) Qb6 15..Nd6 Rf8 (15...Re6 16..N*f7!? K*f7 17..Ng5+ unclear)
16..Bc3 Ne8 17..N*c8 R*c8 18..Qf5 Nc7? The d-pawn was threatened, but this drops
the exchange as well.19..Ne5 N*e5 20..B*c8 Q*c8 21..R*a5 Qd7 22..Qd4 B*d4 23..Q*d4 b6
24..e4(!) Qd6 25..Rfd1 Rd8 26..Qc3 Nb5 27..Qc6 Q*c6 28..R*c6 Kf8 29..a4(!) Nd6 30..R*d5
...Ke7 31..Rc7+ Most humans would play the simpler 31..e5
...Ke6 32..f4 f5 33..R*g7 Rc8 34..Rd1 f*e4 35..R*h7 Nf7 36..g4 Rc2 37..g5 a5 38..g6 Ng5
39..f*g e3 40..g7 Rc8 and Resigns. 1=0

Final Standings

	Turbo.	Forte	Rebell	Exc.	Exp.	Super C.	Sens9.	QL	Total	Perf.
Turbostar	---	1	0	1	0	1	1	1	5	2087
Forte	0	---	1	.5	.5	1	1	1	5	2080
Rebell	1	0	---	0	1	1	1	1	5	2080
Excellence/3	0	.5	1	---	1	0	.5	1	4	1977
Expert/4	1	.5	0	0	---	.5	1	1	4	1972
Super C.	0	0	0	1	.5	---	1	1	3.5	1924
Sensory 9	0	0	0	.5	0	0	---	1	1.5	1723
Pision QL	0	0	0	0	0	0	0	---	0	1536

Performance figures are included being standard NEWS SHEET calculations (Eric).

Even the tie-breaking system couldn't separate the top three,so an equal first result was declared.The verdict on the individual machines' performances?... the under-rated Turbostar again did well and would have won outright if it hadn't been for the last round disaster (sabotage at tea-time? surely not).

"Fred",despite giving Alastair last-round palpitations,played well overall, losing only one game.The Rebell wasn't as convincing as the above two machines in achieving its 5/7 score,experiencing difficulties in minor piece endings against both "Eric" and "Fred".

The Expert,Super Constellation & Excellence performed much as expected,the latter being especially good value for money for average club players. The QL was very unlucky in scoring zero points,often achieving good positions only to be swindled.And "Charlie" really was a hacker (exactly like its owner!).

A good,if tiring,time was had by all (humans,that is!) and hopefully next year similar events can be organised.

Jinder Singh,

Again may I add my thanks to Jinder and the York University group for these results and work and their permission to print same in NEWS SHEET. Apart from finding that they'd called the Excellence "Eric", I enjoyed it very much!! (Only joking).

KING'S HEAD TOURNAMENT. Two NOVAG FORTE B machines played obtaining a joint rating of 2152 Elo (194 BCF), a result clearly confirming the last NS Issue's report on the clear improvement of the FORTE UP-GRADE. Games with light annotations should be available from Eureka with further details of the Tournament and Forte B and up-grade prices.

The FORTE B also scored 9/9 in a Greek Club Tournament (3 mins per move (Kings Head was 2 mins per move)). Opposition varied from 1700 to 1900 Elo, rating for the Forte B thought to be over 2200 Elo! as it was played on the Swiss System and Forte was continually meeting the Tournament leaders (or rather, runners up!).

COMMERCIAL COMPUTERS RATING LIST, 25 August 1987

BCF Computer	Elo	+/-	Pos	BCF Computer	Elo	+/-	Pos
203 MEPH DALLAS 68020	2227	17	1	152 MEPH 3 EXCL	1816	32	41
195 MEPH DALLAS 68000	2163	17	2	152 CONCHESS/2	1814	15	42
192 NOV EXPERT/16	2133	37	3	152 FID ELITE 8	1813	64	43
189 MEPH AMSTERDAM	2116	10	4	152 NOV CONST/3.6	1812	15	44
185 NOV SUPER FORTE/EXP	2080	99	5	150 FID SENSORY 12	1797	15	45
182 PSION ATARI/B PC	2053	38	6	148 SARGON 4 PC	1787	60	46
181 NOV FORTE 8	2045	28	7	146 MEPH MONDIAL	1768	28	47
178 KASP LEONARDO M/68	2022	155	8	146 PSION QL PC	1765	68	48
177 NOV EXPERT/6	2018	19	9	145 SARGON 3 PC	1763	72	49
176 FID EXCEL CLUB	2005	74	10	143 SUPER ENTERPRISE	1742	20	50
175 FID AVANT BARDE	2003	14	11	142 FID ELITE OLD	1740	36	51
175 MEPH REBELL	2001	16	12	142 COLOSSUS 4 PC	1732	42	52
175 FID PAR E/S	2000	13	13	141 NOV CONST/2	1730	13	53
175 NOV FORTE	2000	12	14	141 WHITE KNIGHT 12 PC	1728	134	54
175 NOV EXPERT/5	1997	21	15	140 KASP LEONARDO BAS	1722	85	55
172 KASP LEONARDO M/6A	1977	28	16	139 REGENCE/EMPEREUR	1712	95	56
172 CONCHESS PLYMATE/6	1976	14	17	139 AMSTRAD 3D PC	1710	147	57
170 FID EXCELLENCE/4	1961	13	18	139 PHILIDOR 1.9 2	1710	110	58
170 NOV EXPERT/4	1960	15	19	138 CXG CHESS 3000	1702	147	59
170 MEPH SUPER MONDIAL	1958	21	20	138 FID SENSORY 9/2	1702	26	60
169 SCI TURBO KASP/4	1953	22	21	135 COLOSSUS 2 PC	1680	81	61
168 CONCHESS/6	1944	21	22	133 MYCHESS 2	1664	84	62
167 MEPH NM2	1938	20	23	132 MEPH 2A	1659	34	63
167 KASP LEONARDO M/4A	1938	55	24	131 KASP TURBO 24K	1647	49	64
167 PSION 1/B PC	1935	57	25	131 CHESS 2001	1646	48	65
166 CONCHESS PLYMATE/4	1931	19	26	130 CYRUS 2.5 PC	1639	104	66
165 FID EXCELLENCE/3	1919	13	27	130 PLAYMATIC	1639	134	67
165 SCI TURBOSTAR 432	1919	15	28	130 MEPH 3A	1638	27	68
165 FID ELITE C	1918	34	29	129 SCI SUPERSTAR	1631	28	69
164 CHESSMASTER 2000/8 PC	1910	82	30	128 CONCHESS A0	1625	74	70
163 FID ELEGANCE	1907	17	31	128 FID SENSORY 9/1.5	1625	21	71
162 NOV SUPER CONST	1895	10	32	128 KASP TURBO 16K	1625	41	72
161 MEPH BLITZ	1892	27	33	127 BGM + STEINITZ	1615	26	73
161 CONCHESS/4	1889	16	34	126 KASP EXPRESS 16K	1604	104	74
156 COFFEEHOUSE/4 PC	1847	110	35	125 SUPERCHESS 3.5 PC	1602	69	75
155 NOV QUATTRO	1839	23	36	125 SCI C/C MARK 6	1599	64	76
154 FID PRESTIGE	1831	18	37	124 CYRUS 1.9 PC	1593	62	77
153 SCI SUPERSTAR 36K	1823	21	38	124 MEPH 3	1591	28	78
153 NOV PRIMO	1822	59	39	124 CXG CROWN	1590	147	79
152 FID ELITE A	1817	46	40	122 MICROMURKB	1577	95	80

For info. of new readers:- 'M' after a Computer refers to its running speed in MHz. Eg. CONCHESS/6 is the Conchess programme running at 6MHz whilst CONCHESS/2 is the same programme running at 2MHz. 'PC' after a Machine means that the Programme is available on disc or tape for a Personal/Home Computer. All other Machines are (or have been) commercially available as a 'dedicated' Chess Computer.

At least one of the new Machines is already on its way to me, so the next Issue will be briefer but designed to cover the new Computers especially. I will be aiming to confirm or adjust as accurately as possible the Ratings presented for them here, especially in view of the obviously unexpected nature of one series of results. I will include some game examples for prospective purchasers to play through and try to produce an 8-page Issue within 4 or 5 weeks. Obviously if the new CXG 68000's, the Rebell up-grade or the Scarlet Pimpernel (Leonardo Maestro!) arrive, they will be included as well.