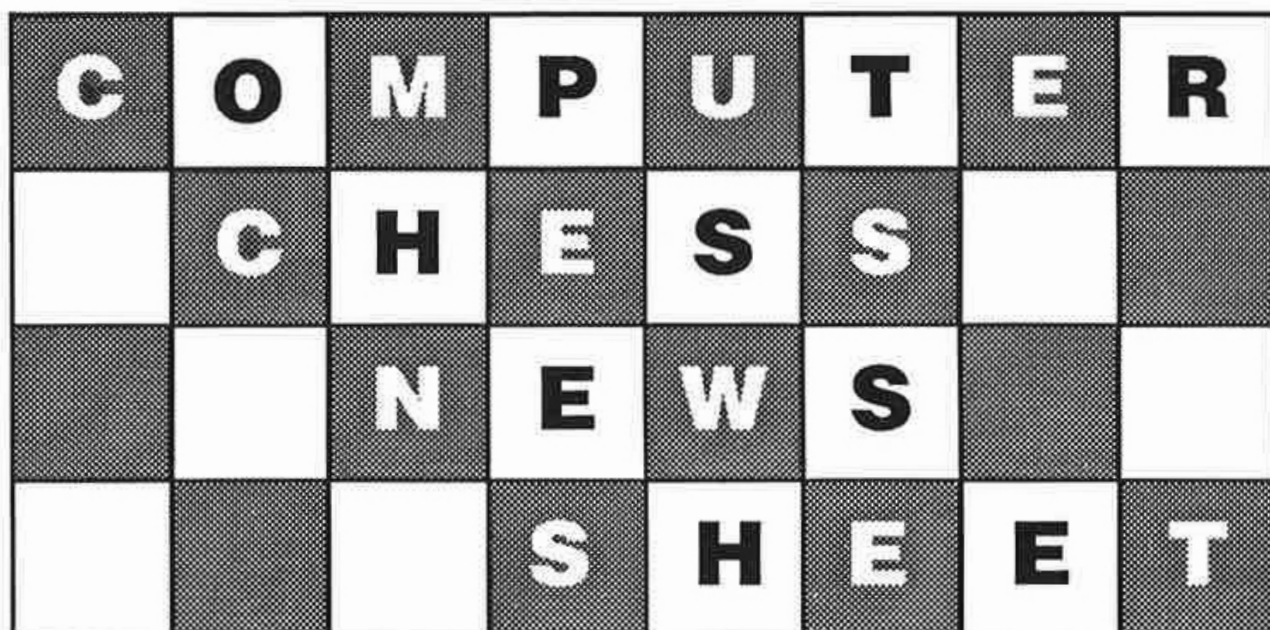


Computer Chess News Sheet 43A SPECIAL EDITION, DECEMBER 1992



EDITORIAL NOTE from Eric Hallsworth: The purpose of the **NEWS SHEET**, established by me in 1985, and produced continuously by me since then, has always been to survey the **CHESS COMPUTER** scene, with special emphasis on reliable assessments of the **PLAYING STRENGTHS** of the many machines and programs now available.

PUBLICATION DATES: Early Feb, Apr, Jun, Aug, Oct, Dec. (Each year one of these Issues will incorporate our Chess Computer **ANNUAL**).

A REMINDER LABEL or **INSERT** will be included when you are sent the **LAST ISSUE** covered by your current sub. You will need to send your **RENEWAL**, payable to **Eric Hallsworth**, in order to receive the next issue.

NEW SUBSCRIBERS: Always please state the number of the **FIRST** issue that you wish your sub to cover – otherwise we send a copy of the **CURRENT** issue.

ARTICLES, REVIEWS, GAMES sent in by Readers, Distributors, Programmers etc, are always welcome, and will receive fair consideration for publication.

CONTENTS

1-7 SPECIAL EDITION

The arrival of the new **KASPAROV 32-BIT RISC 2500**

8 RATING LIST

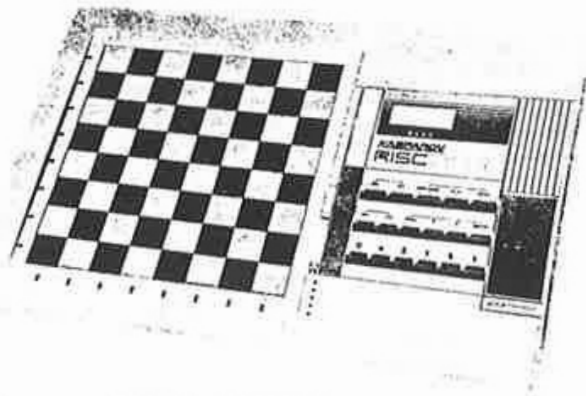
NOTE: There will be a **FULL DECEMBER ISSUE (43B)** which will include the results of the November **COMPUTER CHESS WORLD CHAMPIONSHIPS** in Madrid – Don't miss it!

© Dec 1992 Eric Hallsworth: No part of this publication may be reproduced in any way without the express written permission of Eric Hallsworth

The Red House, 46 High Street, Wilburton, Cambs CB6 3RA

Tel: 0258 840 285 (Mon-Fri, 1-5pm)

KASPAROV 32-BIT RISC 2500



The word '**BREAKTHROUGH**' is not new especially in a decade of often astonishing progress in the field of Computers. The expression has also been used, quite legitimately I should add, to mark the arrival of various new CHESS COMPUTERS through the years, where they have clearly shown a notable advance on pre-decessors.

Such machines have come from Fidelity, Mephisto, Novag and Saitek and, when asked to mention a few, I would happily propose that the SENSORY 9, SUPER CONSTELLATION, PAR EXCELLENCE, AMSTERDAM, MACH 3, the Richard Lang series PORTOROSE-LYON-VANCOUVER, have all represented a 'breakthrough' in performance in their time. Very recently the emergence of new Chess programs on RISC processors has caused another major step forward.

Of course, some of these advances have come with an appropriately **LARGE PRICE TAG!** But not always... and **NOT THIS TIME!**

Despite the low price, the new KASPAROV RISC 2500 is quite possibly the STRONGEST DEDICATED CHESS COMPUTER ever seen!

Firstly let me give you some basic information and practical facts to go alongside the photograph of the Board:

The PROGRAMMER... Holland's JOHAN DE KONING, whose first commercial Chess program in 1991 was named THE KING (for use with PC's), and has been vying all this year for the NO.1 SPOT in the PC Rating List with Ed Schroeder's GIDEON. Koning's 1992 improvements to its all-round chess knowledge

enabled THE KING to come FIRST in the 1992 WORLD COMPUTER OLYMPIAD, and it is this program which is now available for the first time in the dedicated chess board of the KASPAROV RISC 2500!

The next challenge will probably be the WORLD COMPUTER CHAMPIONSHIPS, to be held in Madrid at the end of the year (1992). The tremendous standard of chess in the new RISC 2500 is such that, although it will meet massive main-frame computers in the Madrid Event (though main-frames have to play by Telex from their large University stations!), there are those who believe that Koning's program can WIN!

The BOARD... Is very attractive, a high-quality and impressive silver and black, with magnetised squares to ensure piece stability. Subtle use of a red-shading as background for the display and name badge add an extra sense of importance and strength.

The pieces are of metallic finish, standard Staunton appearance (a plus point when it comes to chess sets!), and easily distinguished being nicely sized with 2" Kings. There is a very handy piece storage compartment in the base of the unit - this important extra is all-too-rare nowadays.

The board overall measures 16½"x11", with an 8"x8" press-sensory playing area. As is usual with the Kasparov boards, this is a little bigger than you get with most press sensory systems. It means the playing area has a proper surround separating it from the various feature buttons and the graphic display, which are at the side. I find this arrangement more pleasing to play on as it avoids the sense of clutter which some machines can give.

The Computer's moves are shown by discreet co-ordinate LEDs, and by algebraic notation with appropriate piece symbol (!) in the display. Another definite plus is the contrast slider which means you will be able to read the display easily in all types of lighting condition!

The HARDWARE... The RISC 2500 uses a full 14MHz 32 bit RISC processor for the highest speed of analysis available in any dedicated chess computer. The program is on a 128Kb ROM chip, and the RAM for hash tables

is also 128Kb. This speeds up the searching in both the middle and endgame by storing the results of analysis in memory as it is completed - in the same way a human would (or should!) Purchasers will be pleased to know that the RAM will be upgradeable during 1993 to a massive 2056Kb. This makes the 128Kb sound small, but the fact is that it is remarkably effective at this level. What will be achieved when the RAM upgrades are available, goodness knows!

The FEATURES in brief... Quality, easy move input press-sensory board; Display shows Moves with piece symbols and algebraic notation, plus Chess Clocks, Position Evaluation, Search Depth, Predicted Analysis (clever use of scroll buttons make it simple to follow this through many Ply if required). All Information is available whether it is your move, or the computer itself is analysing.

Display messages available in English, German, French and Dutch; Six categories of Playing Levels (Speed/Blitz, Tournament, Casual, Training (suitable for beginners!), Mate Search and Analysis/Infinite for Correspondence help); Within the Categories the user may set an Infinite variety of possibilities - i.e. ANY time can be set for 'Game in x', ANY number of moves can be set to be played in ANY time you choose (so 47 moves in 34 mins is possible if you insist!); Set-up and Verify for Adjudgments, Problems and Studies; Move Take-back and Replay (full Game if required); Adjustable Sound volume; Adjustable Display contrast; Monitor (2-player) mode; Auto play (computer plays against itself... e.g. for overnight analysis at your choice of time control!). The Current game is automatically saved at switch off - A Display message at next start-up will confirm game with [x] moves is in memory as soon as you switch back on.

An ingeniously easy-to-use MENU driven Option System controls access to all the features, levels and choices - the Display keeps you informed of where you are up to, so you need never go wrong, enabling you to put away the comprehensive Instruction Manual in a very short time.

THE CHESS... The large and up-to-date Opening Book identifies and names the

openings as you play. This is a valuable feature for all players - and the less experienced player will quickly find himself becoming an expert in many openings (or at least he'll be able to sound like one!).

The Playing Style is as human-like as you will find, with the most balanced search extension methods ever. The RISC 2500 program has all the highly sophisticated chess knowledge that any self-respecting I.M or G.M needs, and plays most attractively, seeking to be positive, very sharp at tactics, brilliantly fast when there's a mate about, secure in defence whilst always looking for the counter-attack. The user can adjust the computer's playing style to obtain the exact particular type of practice opponent he wants (or to fit-in with a particular opening style). The styles are Offensive, Active, Normal (the default), Solid and Defensive. Users can also choose between the (default) Selective Search style, and a Brute Force method.

[I must inject a personal comment here! Quite rightly, if the computer finds itself on the Black side of a Caro Kann, its middle game play should be in a Solid or Defensive style. I find that the RISC 2500 has a natural ability to recognise what is required by all sorts of positions, and I recommend users always try it on Normal first of all. In most cases I think they will find this is inherently best. Even so, there can be advantages in making a style adjustment. For example, if you know your own weakness is in defending against a strong king-side attack - perhaps resulting from a Gambit - then you can get exactly the practice you need by asking the computer to play against you Offensively!].

Both the Kasparov programming team AND we at Competence have every sympathy with those who won't want to play against the RISC 2500 at its full strength all the time. It's wonderful to have such a remarkably strong computer - but not necessarily be the one continually on the receiving end of the proof! So it is good to know there are four different standards of play available: Expert (the default), Strong, Moderate and Novice (where your computer will even make deliberate mistakes now and then!). When you want to play against the computer at its full strength of Expert (or keep it there for analysis,

study or self-improvement), then the 2500 will be at its best. However sometimes we can learn more when our opponent is only slightly stronger than us, making for a much more even game. Owners will soon find the level that gives just the challenge they want... and the full 2500 analysis features are always available for going over a game afterwards, to see where better moves could have changed the course of the game.

The possibilities are, as you can see, almost limitless!

Allow me a moment of bias – as we (Competence) offer a 28-Day Home Trial on all products (ie your money back if not satisfied!), I think every News Sheet reader would find it well worthwhile seeing this excellent machine for themselves.



Tel: 0258 840 285

SOME GAMES

The **KASPAROV RISC 2500** program has just finished a 10 Round event in a very strong field at the 29th. AKIBA RUBINSTEIN MEMORIAL Tournament, in Warsaw, Poland. The rate of play was the standard 40 in 2 hours, though computers always have to be set to play faster, to allow for operator's time losses.

And it did extremely well...! ending with 6/10 for a prestigious 21st. place, and the highest grading of the Computers entered. Elo gradings are not available for everyone in Poland (!), but many Russians were entered as well, and the RISC 2500 scored 3½/6 against opposition averaging an impressive 2301

This gave the RISC 2500 an excellent Tournament Grading of 2367! The Mephisto RISC 1Mb (priced at over £1,000) was not far behind with a 2340 grading. The results for both machines are

worth considering together, as they confirm again the new standards being set by RISC system chess computers.

Here is the KASPAROV RISC 2500's shortest game from Warsaw:-

White **Kasparov RISC 2500** - Black **K SZYDELKO** (2000 Poland)

1.d4 Nf6 2.c4 e6 3.Nc3 d5 4.Nf3 Bc7
5.Bg5 O-O 6.e3 Nbd7 7.Bd3 dxc4
8.Bxc4 b6 9.O-O Bb7 10.Rc1 c5
11.Qe2 cxd4 12.Nxd4 Ne4 13.Nxe4
Bxe4 14.Qg4

[A move that looks threatening, but can be met by 14...Bxg5. Then White must reply 15.Qxe4, with only a small advantage. Was Black trying to leave some tension in the centre, or did he simply fail to see the Computer's growing range of possibilities? One mistake under pressure, and fireworks end the game]

14.... Bb7?? 15.Nxe6!

[A fine move that left the opponent momentarily stunned]

15.... Qe8??

[A typical follow-up error, which we see and have commented on so often. 15...fxe6 was somewhat better; and 15...Ne5 perhaps best, though both would still be losing of course]

16.Bxc7 fxc6 17.Qxe6+ Rf7 18.Rfd1!

[And Black resigned in this impossible situation]

Now some games against other 'leading' Computers, which come from my own tests at home. Firstly against Richard Lang's current top program - remember Richard won the World Championship, either outright or shared, every year for the past 8 years up until 1991.

Mephisto VANCOUVER 68020

(2275) - Kasparov RISC 2500 (2350)

Eric's, G/60, 1992

1.c4 e5 2.Nc3 Nf6 3.Nf3 Nc6 4.e3 Bb4
5.Qc2 O-O 6.Nd5 Re8 7.Qf5

[This puts the RISC 2500 out of Book. VANCOUVER expects Nxd5]

7...d6 8.Nxf6+ gxf6 9.Qh5 e4

[Despite the damage to its K-side Pawns, RISC sees itself as +52]

10.Nd4 Nxd4 11.exd4 c5 12.a3 Ba5
13.d5 Re5 14.Qh6 Rg5 15.g3 Qe7

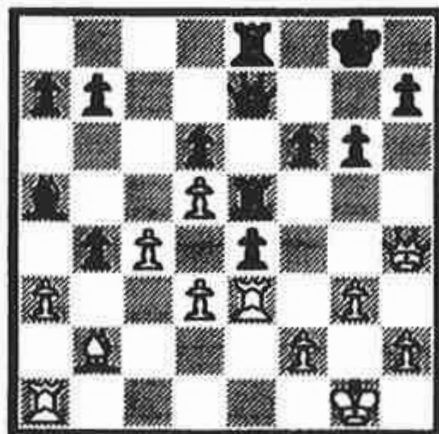
16.Bc2 Bd7 17.0-0 Rg6 18.Qh4 Bf5
19.Bh5

[The VANCOUVER must have liked playing this, as its eval. moved to +33]

19...Rg5 20.Re1 Re8

[White's forward analysis suggested it expected Black to try a Q-side push, using b5. The RISC 2500 continues to concentrate on the centre and K-side]

21.Re3 Bg6 22.Bxg6 fxc6 23.d3 Re5
24.b4 cxb4 25.Bb2



I had expected 25.axb Bxb4, then 26.Bb2. But the RISC 2500 had anticipated this move order, and was ready with a surprise)

25...Bb6! 26.Bxc5 Qxe5

[The RISC had intended Bb6 as an exchange sac. In any case, if it had planned here 26...Bxe3, then 27.Bxf6 would have put White well on top. But who's winning now?]

27.Ree1 e3 28.fxe3 Bxe3+ 29.Kh1 b3

[Again, WHO is winning? Both machines think THEY are! VANCOUVER +54, the RISC showed +45, expecting 30.d4]

30.Qc4 Qxe4+ 31.dxc4 b2 32.Rab1
Bd4 33.Rbd1?! Bc5 34.Re3 Rc8!

[An excellent move, giving the RISC 2500 a definite advantage. It reads +106, though VANCOUVER's drop is only to -3 with its next... a move and evaluation blunder]

35.Rb3?

[The wrong Rook. In retrospect White should have gone back to the blockade with Rb1]

35...Rxc4

[RISC 2500 shows +173, indicating a much superior understanding of this position]

36.Rxb7??

[VANCOUVER has -781 here... which is about right for this poor move. 36.Kg2 was certainly better, though 36...Rc1! still wins for Black, of

course]

36...Rc1

[RISC 2500 says +999!!]

37.Rb8 + Kg7 38.Rb7 + Kh6 39.Kg2
Rxd1 40.o4 b1Q [A staggering end!] 0-1

Current score: RISC 2500 4, Vancouver 68020 2.

Also: RISC 2500 4, Berlin 2.

Kasparov RISC 2500 (2350) - HIARCS 286 (2125) Eric's. G/60, 1992

1.Nf3 d5 2.d4 Nf6 3.c4 dxc4 4.e3 b5?!
5.o4!

[The response given in a BCO note!]

5...c6 6.b3

[BCO only has 6.axb cxb 7.b3, with a small advantage to White]

6...cxb3 7.axb5 Be6 8.Nc3 Nd5 9.Bb2
Nb4!

[A fine choice by HIARCS, with the very unpleasant threat of Nc2+! HIARCS did extremely well in the OLYMPIAD this year - admittedly running on a SUN SPARC system. Here it is on my 16 bit 80286, but it plays some nice chess even though a little over-awed at times!]

10.Ra4!

[An unexpected idea, which is also a very interesting one! 10.Bd3 Nxd3+ 11.Qxd3 c5 was the fine analysis by HIARCS (11...a5 would have been good here, as well)]

10...Nc2+ 11.Kd2 c5 12.Bd3!

[Suddenly the b3/Pawn doesn't look half so dangerous, as White's 10.Ra4 has prevented Black from now playing c4]

12...cxd4 13.exd4 Bd5 14.Nxd5 Qxd5
15.Bc4!

[White is winning material with this - but more importantly readers should look at the massive differences in development brought about by the RISC 2500's clever counterplay. This is not achieved by processor speed (though RISC 2500 has plenty of that when needed, as we know), but by a superior quality of chess understanding]

15...Qd6 16.Ne5!!

[A wonderful move! HIARCS had expected the 'obvious' Bxb3. After a few moments analysis following Ne5, HIARCS itself drops to -304]

16...e6 17.Bxb3 Nb4 18.Qf3

[Obvious, but deadly. Eval. is now at +550]

18...f6 19.Rc1! N4c6 20.bxc6 Qc7

21.Qh5 + g6 22.Nxg6 hxg6 23.Qxg6 +
Qf7

[If 23...Ke7 24.Ba3 +, or 23...Kd8 24.Qx16 +]

24.c7 Nc6

[The best reply]

25.Qxf7 + Kxf7 26.Rxc6 Bh6 + 27.Kd3

Rhe8 28.Raa6 Bf4 29.e8Q Raxc8

30.Rxc8 Rxc8 31.Bxc6 +

[And Black is showing -1602, so we finished here]

1-0

Current score: RISC 2500 4½, HIARCS 1½

We come next to the match which most folk 'in the know' about the real competition for TOP place in the COMPUTER RATING LISTS are looking forward to. From the games I have played - against each other, against me (!), and also comparing the way they deal with other opposition, I honestly don't think there's much between them (apart from the price, that is!). Early results coming in from other testers now show the Kasparov RISC 2500 edging ahead, though they remain almost equal on my own Rating List.

Mephisto RISC 1Mb (2360) - Kasparov RISC 2500 (2350) Eric's. G/60, 1992

1.e4 d5!?

[Well, I told you the RISC 2500 was always interesting]

2.exd5 Qxd5 3.Nc3 Qa5 4.d4 Nf6

5.Nf3 Bf5

[Both programs now leave their Books - White has a +40 advantage according to each machine, following Black's combative selection]

6.Nd2 e6 7.Nc4 Qb4 8.Bd2 Qe7 9.Bg5?! h6 10.Bxf6 Qxf6 11.Na5 Nd7

[The Kasparov RISC concentrates 100% on development]

12.Nxb7 Bb4 13.Bb5 Rb8 14.Bc6

[14.Bxd7 + Kxd7 15.Nc5 + might have been better. White is in danger of an over-commitment on the Q-side whilst Black's superior development includes central advantages]

14...e5 15.d5 0-0 16.0-0 e4 17.Nb5

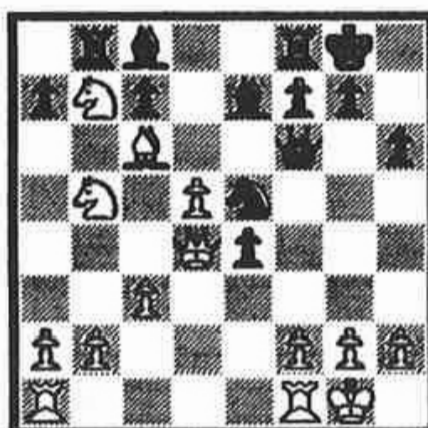
Ne5 18.Qd4 Be7 19.c3?!

[I prefer 19.Rad1 here]

19...Bc8!

[See DIAGRAM at the top of the next column. I think this Bc8 is an exceedingly clever move! Apparently aiming to neutralise White's Q-side attack, the RISC 2500 is actually forcing his opponent to play Qxa7, making his piece placements much too lopsided regardless of

material plusses]



20.Qxa7 Qg5!

[Mephisto reads =, Kasparov shows +86. The RISC 2500 now expected 21.a4 from White in an attempt to minimise potential Q-side losses. However White decides to go for exchanges, hoping to kill-off Black's potential attack. In practical terms this might have been the best chance against many opponents]

21.Qxb8 Bh3! 22.Qxf8 + Kxf8 23.g3 Qh5!

[Bxf1 was too obvious for the RISC 2500. It aims for Qh5-f3-g2 mate!]

24.f3

[Mephisto finds the best defence, though it's too late now. 24.Nd4 would protect f3 pointlessly, as 24...Nf3 + anyway (can't be taken because of mate) 25.Kh1 Bg2 + 26.Kxg2 Qxh2 + mate anyway! And if 24.f4 Qe2 25.R12 Nf3 + 26.Kh1 Qx12 27.Nxc7 Qxh2 + mate!]

24...Nxf3 +

[With an eval. of +586]

25.Kf2 Bxf1 26.h4 Bxh4

[And a mate in 9 announcement, though White now missed the best reply and was done in 7!]

27.Rxf1 Qg5 28.Rd1 Qxg3 + 29.Ke3 Bg5 + 30.Kxe4 Nd2 + 31.Rxd2 Qe3 + 32.Kf5 Qf4 + mate, and 0-1.

Current scores:

Germany (40/2): Kasparov RISC 3, Mephisto RISC 3

My score (G/60): Kasparov RISC 3, Mephisto RISC 3

Richard O'Neale (60/60): Kasparov RISC 4½, Mephisto RISC 1½

Also: RISC 2500 3½, Novag SCORPIO ½

I have also just started a Match with M CHESS on a 386PC. Here is the first game from that...

M CHESS/386 (2220) - Kasparov RISC 2500 (2350) Eric's. G/60, 1992

1.c4 c6 2.d4 d5 3.Nc3 Nf6 4.cxd5 cxd5 5.Bg5

[Both Computers have left their Books. M CHESS is, of course, very well known as the strongest PC SOFTWARE program currently available. It's a little stronger than HIARCS, and is running here on an 80386PC at 20MHz]

5...Nc6 6.e3 Ne4 7.Nxe4 dxe4 8.Qa4 f6 9.Bh4 e6 10.a3 Bd6 11.Ne2 Qb6 12.b4 Bd7 13.Qb3 Ne7 14.Nc3 Nf5 15.Bb5 0-0-0?!

[A dangerous choice, I think!? But lots of fun!]

16.Bxd7+ Kxd7 17.Bg3 Nxc3 18.hxc3

[M CHESS is reading +102, confident that Black's doubtfully placed King must cost it at least a Pawn!]

18...f5 19.g4 g6 20.gxf5 gxf5 21.Rh6 Bf8

[A lively defence]

22.Na4 Qc6 23.Nc5+ Bxc5 24.dxc5 Kc7 25.Qc3 Rhf8

[Not relishing 26.Qf6+ at all and, if 25...Rdf8, then 26.Rd1 is very strong]

26.Rxh7+ Rf7 27.Rh8 Rd3!?

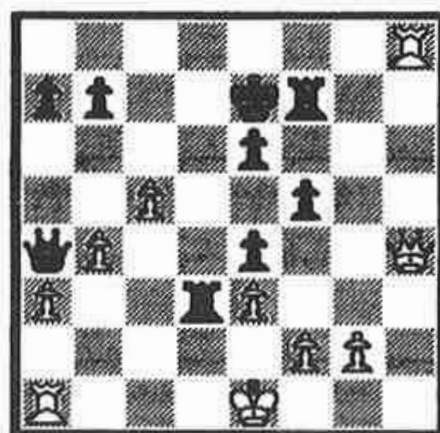
[The start of a wonderful decision to attack from disadvantage!]

28.Qe5 Qd7 29.Qg3 Qa4!

[M CHESS jumps to +3.04 after this, but RISC 2500 has a glorious counter-attack in view]

30.Qh4+

[See DIAGRAM at the top of the next column. Can Black survive?! Can his King escape? Then what?! The Kasparov RISC 2500 is perfectly optimistic about this!]



30...Kd7 31.Qd8+ Kc6 32.Qe8+

[M CHESS doubts set in, now 'only' +208]

32...Rfd7 33.Qxe6+

[Now I'm 2 Pawns up!.. but M CHESS isn't that pleased, and its eval. drops again.. now +112]

33...Kb5 34.Qxd7+

[And the penny drops, and its -404. What more need we say? Perhaps a bit of analysis:- 34.Qa2 Rd1+ 35.Ke2 Qxa3 36.Rxd1 (36.Qxa3 R7d2+ mate, or 36.Qc2 to stop Qd3 mate loses one Rook immediately) Qxa2+ 37.Ke1 Rxd1+ 38.Kxd1 Qa1+]

34...Rxd7 35.g3 Qc2 36.Kf1

[-990, so resigns. But let's just show a few more moves...]

36...Qb2 37.Re1 Qxh8 38.c6 Qh1+

[With mate announcement]

39.Ke2 Qf3+ 40.Kf1 Rh7 41.a4+ Kb6

42.a5+ Kb5 43.cxb7 Rh1+ [mate] 0-1 and

I like it! Finally here is a TABLE showing the TOP 8 programs of 1992 on my RATING LIST. It includes DEDICATED Chess Computers (i.e. those having their own Integral board like the RISC 2500) and programs requiring a PC to run them, so you use the Monitor Screen. It is EASY to see which ONE machine is today's BEST BUY!

Eric Hallsworth

The WORLD'S TOP CHESS COMPUTERS

1	Mephisto LYON 68030	2360 Elo	£3,995 new
2	Kasparov RISC 2500	2359 Elo	£ 399 only! - easily best value!
3	Mephisto RISC 1Mb	2356 Elo	£1,195
4	GIDEON RISC for PCs	2320 Elo	£ 599 plus a PC!
5	The KING RISC for PCs	2293 Elo	£ 599 plus a PC!
6	M CHESS on an 80486 PC	2292 Elo	£ 79 plus a 80486 PC!
7	Meph VANCOUVER 68020	2267 Elo	£1,195 (from!)
8	Mephisto BERLIN	2254 Elo	£ 449

RATING LIST (c) Eric Hallsworth, NS438 B Dec 1992

BCF	Computer	Elo	+/-	Games	Pos	Human/Games
220	MEPH LYON 68030	2360	24	372	1	2407 51
219	KASP RISC 2500	2359	42	117	2	2273 15
219	MEPHISTO RISC 1MB	2356	14	1040	3	2286 43
219	MEPH VANCOUVER 68030	2353	24	365	4	2393 26
217	MEPH PORTOROSE 68030	2343	21	460	5	2354 82
214	MEPH LYON 68020/20	2318	48	92	6	2327 10
208	KASP BRUTE FORCE/10	2267	75	38	7	2251 9
208	MEPH VANCOUVER 68020/12	2267	11	1518	8	2139 32
207	MEPH LYON 68020/12	2258	9	2535	9	2269 74
206	MEPHISTO BERLIN	2254	22	425	10	2256 21
206	FID ELITE 68040-V10	2252	53	75	11	2230 21
203	MEPH VANCOUVER 68000	2230	18	637	12	2120 12
203	FID ELITE 68030-V9	2228	18	605	13	2180 13
202	MEPH PORTOROSE 68020	2223	11	1730	14	2250 182
201	MEPH LYON 68000	2215	13	1278	15	2090 33
199	MEPH ALMERIA 68020	2197	14	1003	16	2188 215
196	MEPH PORTOROSE 68000	2171	12	1478	17	2127 25
196	FID MACH4+2325 68020-V7	2169	12	1416	18	2199 130
191	FID ELITE 2+68000-V5	2133	28	258	19	1888 2
189	MEPH ROMA 68020	2118	14	1043	20	2052 64
189	MEPH POLGAR/10	2115	18	649	21	2085 54
188	NOV DIABLO/SCORPIO 68000	2107	12	1325	22	2164 117
187	MEPH ALMERIA 68000	2103	14	1025	23	2104 31
187	MEPH DALLAS 68020	2100	14	996	24	2080 197
183	FID MACH3+2265 68000-V2	2069	6	4944	25	2117 229
183	MEPH MMS/5	2066	12	1299	26	1902 11
182	MEPH POLGAR/5	2058	10	2080	27	2142 11
181	MEPH DALLAS 68000	2054	12	1501	28	2000 50
181	NOV SUPER FORTE-EXP C/6	2054	9	2412	29	2005 24
180	MEPH MILANO	2044	18	653	30	2062 11
180	MEPH MONDIAL 68000 XL	2040	16	782	31	2060 77
179	MEPH ROMA 68000	2036	9	2278	32	1975 54
178	MEPH ACADEMY/5	2030	10	2000	33	2032 109
176	MEPH AMSTERDAH	2014	9	2373	34	2068 182
176	NOV SUPER FORTE-EXP B/6	2010	12	1343	35	2020 82
175	MEPH MEGA 4/5	2007	9	2456	36	2041 169
175	MEPH MODENA	2002	31	215	37	
175	FID MACH 2C 68000	2000	9	2607	38	2066 127
174	KASP GAL-REN D/10	1999	13	1209	39	1967 109
174	FID MACH 2B 68000	1993	26	302	40	1968 25
174	MEPH GK2000	1992	45	103	41	
173	FID TRAVELMASTER	1991	20	536	42	1982 55
173	MEPH SUPHOND 2-MCARLO.4	1986	31	224	43	2074 8
172	MEPH MM4/5	1982	8	2896	44	2016 97
171	NOV SUPER FORTE-EXP A/6	1970	13	1155	45	2040 176
170	KASP TRAVEL CHAMPION	1963	67	48	46	
169	MEPH MONTE CARLO	1956	28	262	47	2046 10
169	KASP GAL-REN C/8	1954	26	313	48	2016 98
168	CXG SPHINX/4	1949	10	2040	49	1956 155
168	CONCH PLY-VICTORIA/5.5	1948	17	697	50	1890 15
168	KASP TURBO KING 2	1947	16	798	51	
167	FID MACH 2A 68000	1941	25	338	52	1910 35
165	NOV EXPERT/6	1924	31	222	53	2036 22
165	NOV SUPER FORTE-EXP A/5	1920	12	1450	54	1836 29
164	FID CLUB B 68000	1917	12	1459	55	1827 18
163	NOV EXPERT/5	1907	26	310	56	2052 62
162	NOV FORTE B	1902	10	1917	57	1975 208
162	MEPH REBELL	1901	10	2121	58	1948 69
162	FID AVANT GARDE/5	1899	11	1721	59	1862 80
162	FID PAR E-ELITE-DES2100	1898	9	2558	60	1927 220
161	KASP STRATOS-CORONA	1894	10	2050	61	
161	NOV FORTE A	1892	9	2202	62	1930 134
160	MEPH SUPERMONDIAL 1	1885	12	1420	63	1990 6
160	KASP SIMULTANO	1885	14	1019	64	1830 36
160	FID CLUB A 68000	1883	29	242	65	1767 6
160	CONCH PLYMATE/5.5	1880	9	2201	66	1939 55
160	KASP TURBO KING 1	1880	24	364	67	1910 61
159	KASP GAL-REN B/6	1879	14	976	68	1873 123
158	CONCHESS/6	1871	44	107	69	2037 8
158	FID EXCELLENCE/4	1867	11	1740	70	
158	NOV EXPERT/4	1867	14	962	71	1975 43
156	CONCH PLYMATE/4	1855	24	372	72	2027 6
156	SCI TURBO KASP/4	1853	20	512	73	1959 52
156	CXG SPHINX 40	1849	86	29	74	
155	FID ELITE C	1844	34	182	75	1869 11

RATING LIST (c) Eric Hallsworth.

BCF	Computer	Elo	+/-	Games	Pos
154	SCI TURBOSTAR 432	1837	12	1337	76
154	MEPHISTO MM2	1836	16	781	77
154	KASP GAL-REN B/4	1833	76	37	78
153	FID EXCELLENCE-DES2000	1830	11	1646	79
152	KASP PRISMA-BLITZ	1820	26	306	80
151	CONCHESS/4	1812	20	509	81
150	NOV SUPER CONST	1807	7	3669	82
150	NOV SUPER NOVA	1805	22	411	83
149	MEPH BLITZ	1793	27	277	84
147	NOV SUPREMO	1778	75	38	85
146	NOV SUPER VIP	1773	25	335	86
145	FID ELITE A	1765	39	141	87
145	FID PRESTIGE	1763	17	715	88
144	FID SENSORY 12	1756	12	1340	89
144	MEPH EXCL S/12	1754	31	213	90
143	MEPH EUROPA-MARCO PGL0	1745	31	220	91
142	SCI SUPERSTAR 36K	1741	14	997	92
142	CONCHESS/2	1739	14	1096	93
140	NOV CONST/3.6	1726	16	825	94
140	NOV QUATRO	1726	19	585	95
140	NOV PRIMO-VIP	1724	24	354	96
139	MEPH MONDIAL 2	1718	83	31	97
138	FID ELITE B	1708	47	97	98
135	FID ELITE ORIG	1685	39	139	99
134	MEPH MONDIAL 1	1677	29	247	100
133	NOV CONST/2	1664	12	1289	101
131	SUPER ENT-ADV STAR	1650	15	922	102
126	CHESS 3000	1614	112	17	103
124	FID SENSORY 9	1599	13	1114	104
124	KASP ASTRAL-CONQ-CAVL	1595	59	61	105
121	NOV MENTOR 16-AMIG0	1568	99	22	106
120	GGM + STEINITZ	1563	27	287	107
119	CHESS 2001	1556	50	84	108
118	MEPHISTO 3	1547	18	633	109
118	SCI SUPERSTAR ORIG	1544	29	242	110

RATING LIST (c) Eric Hallsworth, PC PROGS

BCF	Computer	Elo	+/-	Games	Pos
215	C-MACHINE GIDEON/PC	2322	16	782	1
211	C-MACHINE THE KING/PC	2294	18	612	2
211	M CHESS 486/PC	2293	19	595	3
211	CHESS MACHINE 1 512/PC	2289	36	158	4
204	ZARKOV 486/PC	2239	38	144	5
202	M CHESS 386/PC	2220	15	880	6
199	PSION 2 486/PC	2197	64	52	7
198	FRITZ 486/PC	2191	36	160	8
193	REX 486/PC	2166	34	182	9
192	C-CHAMPION 2175 486/PC	2136	51	81	10
191	M CHESS 286/PC	2128	19	565	11
190	ZARKOV 386/PC	2124	22	409	12
189	PSION 2 386/PC	2117	37	155	13
189	HIARCS PRO 286/PC	2116	62	32	14
187	FRITZ 386/PC	2098	29	254	15
187	CHESSMASTER 3000 486/PC	2096	48	92	16
182	REX 386/PC	2061	19	557	17
181	ZARKOV 286/PC	2051	35	174	18
179	PSION 2 286/PC	2032	48	92	19
178	FRITZ 286/PC	2028	35	169	20
172	REX 286/PC	1979	40	133	21
170	CHESSMASTER 3000 386/PC	1966	40	131	22
169	PSION PDOM 386/PC	1958	67	48	23
168	PSION 2/PC	1951	10	2139	24
167	PSION PDOM 286/PC	1941	94	24	25
167	CHESSMASTER 3000 286/PC	1936	53	76	26
165	C-CHAMPION 2175 386/PC	1927	91	26	27
163	COLOSSUS X 386/PC	1909	94	24	28
161	CHESSMASTER 2100 386/PC	1895	48	91	29
161	CHESSMASTER 2100 486/PC	1893	94	24	30
156	C-CHAMPION 2175 286/PC	1853	73	40	31
152	PSION PDOM/PC	1819	34	185	32
150	CHESSMASTER 3000/PC	1807	62	56	33
147	SARGON 3/PC	1779	46	100	34
146	CHESSMASTER 2100/PC	1769	28	265	35
145	CHESSPLAYER 2150/PC	1762	41	128	36
144	C-CHAMPION 2175/PC	1759	28	269	37
144	FINAL CHESSCARD/PC	1755	35	174	38